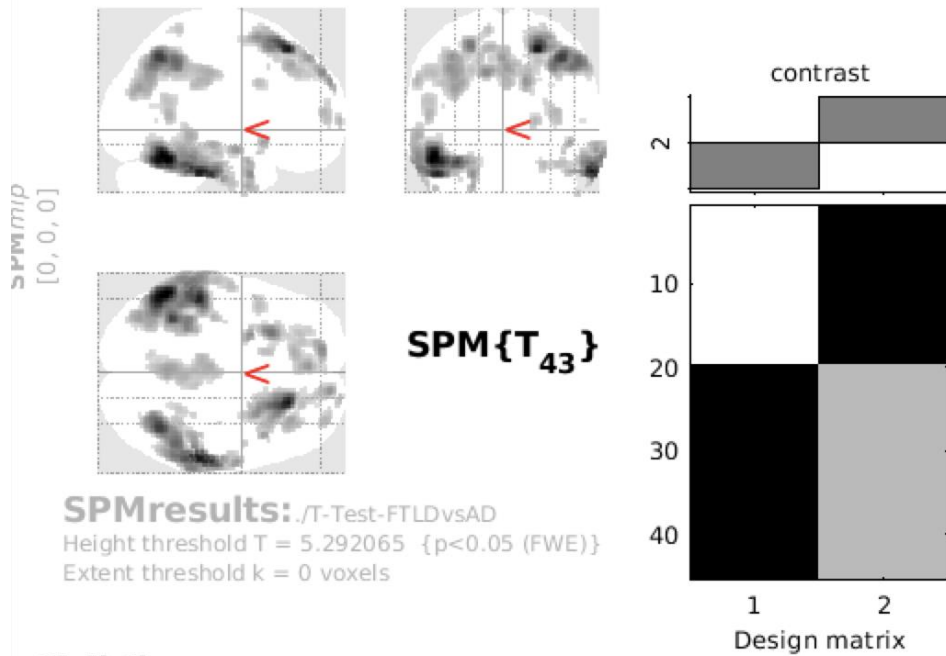


Contrast: A+T+N+ > A-(T+)N+



**Statistics:  $p$ -values adjusted for search volume**

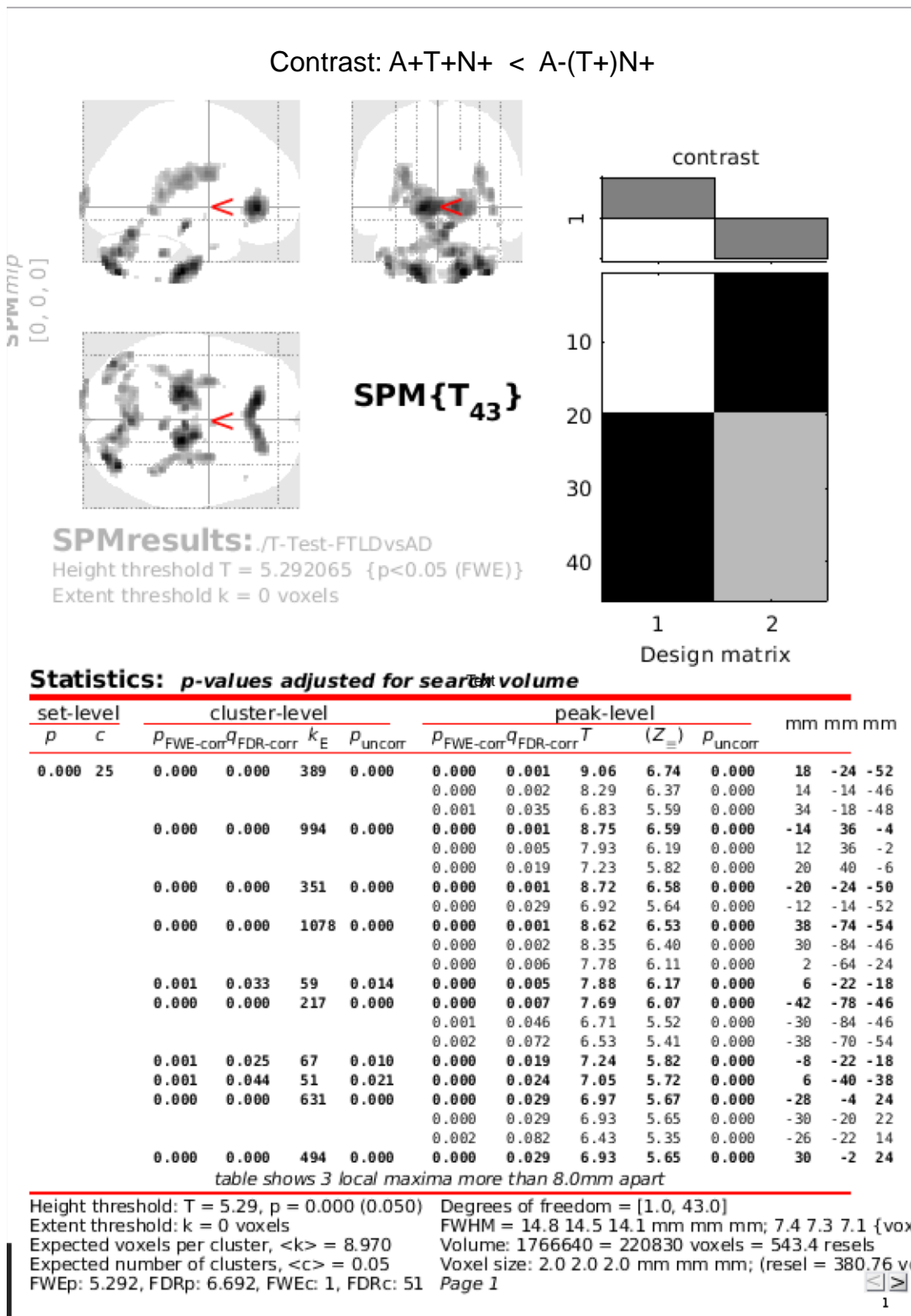
set-level		cluster-level				peak-level					mm mm mm		
$p$	$c$	$p_{FWE-corr}$	$q_{FDR-corr}$	$k_E$	$p_{uncorr}$	$p_{FWE-corr}$	$q_{FDR-corr}$	$T$	$(Z_{\equiv})$	$p_{uncorr}$			
0.000	26	0.000	0.000	2004	0.000	0.000	0.001	8.97	6.70	0.000	-52	-54	-22
						0.000	0.003	8.29	6.37	0.000	-48	-32	-32
						0.000	0.009	7.75	6.10	0.000	-34	-52	-24
		0.000	0.000	796	0.000	0.000	0.002	8.51	6.48	0.000	60	-32	-30
						0.000	0.006	8.01	6.23	0.000	62	-24	-32
						0.000	0.016	7.51	5.97	0.000	60	-42	-26
		0.000	0.000	981	0.000	0.000	0.002	8.48	6.47	0.000	22	30	52
						0.001	0.122	6.62	5.47	0.000	28	8	60
						0.002	0.143	6.47	5.37	0.000	14	58	32
		0.000	0.000	960	0.000	0.000	0.008	7.82	6.13	0.000	38	-58	46
						0.000	0.037	7.18	5.79	0.000	50	-48	44
		0.000	0.000	743	0.000	0.000	0.063	6.94	5.65	0.000	-26	18	54
						0.001	0.125	6.60	5.45	0.000	-14	54	36
						0.002	0.156	6.42	5.35	0.000	-2	44	46
		0.000	0.004	115	0.001	0.001	0.132	6.55	5.43	0.000	-24	4	-32
						0.004	0.215	6.22	5.23	0.000	-24	2	-24
						0.004	0.215	6.20	5.21	0.000	-24	2	-40
		0.000	0.000	1491	0.000	0.002	0.132	6.52	5.41	0.000	-38	-62	48
						0.002	0.140	6.49	5.39	0.000	-38	-66	40
						0.003	0.168	6.35	5.31	0.000	-36	-74	26
		0.000	0.000	964	0.000	0.003	0.176	6.33	5.29	0.000	0	-54	40

table shows 3 local maxima more than 8.0mm apart

Height threshold:  $T = 5.29$ ,  $p = 0.000$  (0.050) Degrees of freedom = [1.0, 43.0]  
 Extent threshold:  $k = 0$  voxels FWHM = 14.8 14.5 14.1 mm mm mm; 7.4 7.3 7.1 {voxel  
 Expected voxels per cluster,  $\langle k \rangle = 8.970$  Volume: 1766640 = 220830 voxels = 543.4 resels  
 Expected number of clusters,  $\langle c \rangle = 0.05$  Voxel size: 2.0 2.0 2.0 mm mm mm; (resel = 380.76 voxels)  
 FWEp: 5.292, FDRp: 7.183, FWEc: 1, FDRc: 67 Page 1

SUPPLEMENTAL FIGURE 1: Result of voxel wise T-test in SPM comparing A+T+N+ to A-(T+)N+.

Contrast: A+T+N+ > A-(T+)N+



SUPPLEMENTAL FIGURE 2: Result of voxel wise T-test in SPM comparing A+T+N+ to A-(T+)N+.

Contrast: A+T+N+ < A-(T+)N+