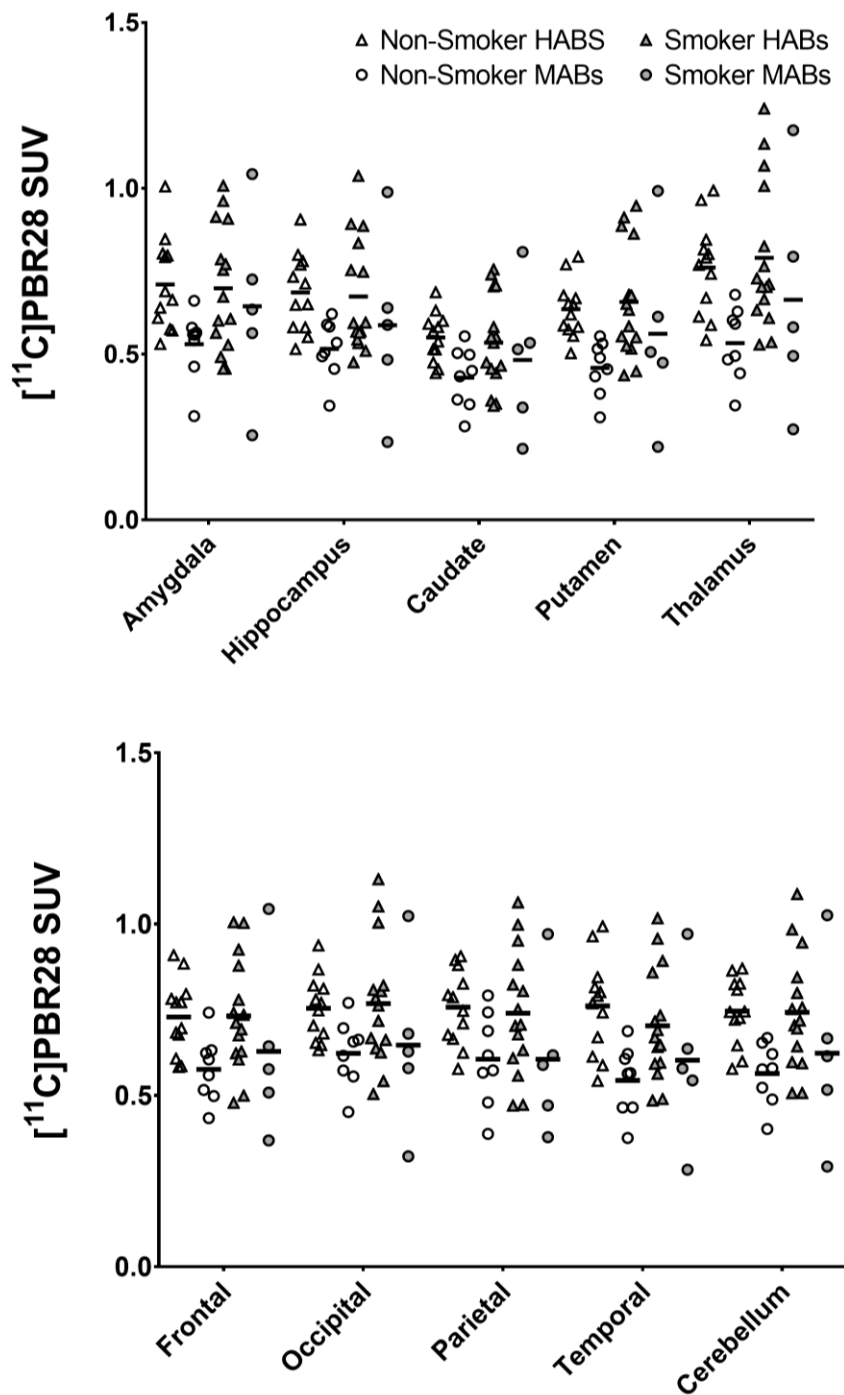


Supplemental Fig 1: $[^{11}\text{C}]\text{PBR28 } V_T$ values are not significantly different between smokers ($n=20$, shaded triangles) and non-smokers ($n=20$, open circles). For completeness, uncorrected $[^{11}\text{C}]\text{PBR28 } V_T$ values are shown, separately indicating HABS (Δ) and MABs (O). Top row shows subcortical brain regions; bottom row shows regions of cortex and cerebellum.



Supplemental Fig 2: $[^{11}\text{C}]\text{PBR28}$ SUV values are not significantly different between smokers ($n=20$, shaded triangles) and non-smokers ($n=20$, open circles). uncorrected $[^{11}\text{C}]\text{PBR28}$ SUV values (90-120 min) are shown, separately indicating HABS (Δ) and MABs (O). Top row shows subcortical brain regions; bottom row shows regions of cortex and cerebellum.