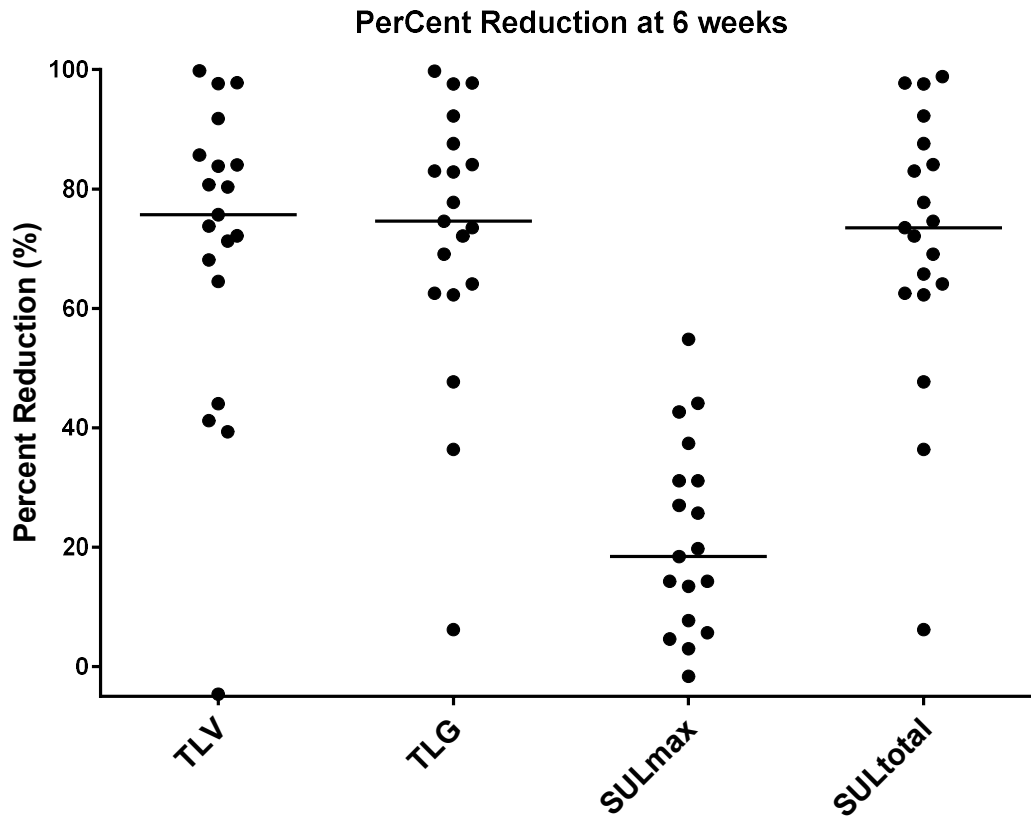


Supplemental Figure 1. FDG PET (MIP) images of the thorax of the nineteen pleural mesothelioma patients. The order of the images in both the baseline and 6 weeks set is based on the Total Lesion Volume at baseline. The measured total lesion volumes are listed below each image. Baseline: before therapy; 6 wks: after two Cycles of SS1P immunotoxin + premetrexed + cisplatinin therapy.



Supplemental Figure 2: Percent Reduction (Response) of Total Lesion Volume (TLV), Total Lesion Glycolysis (TLG), SULmax, SULtotal. Lines show median values. 19 patients with pleural mesothelioma following two Cycles of SS1P immunotoxin + premetrexed + cisplatinin therapy.

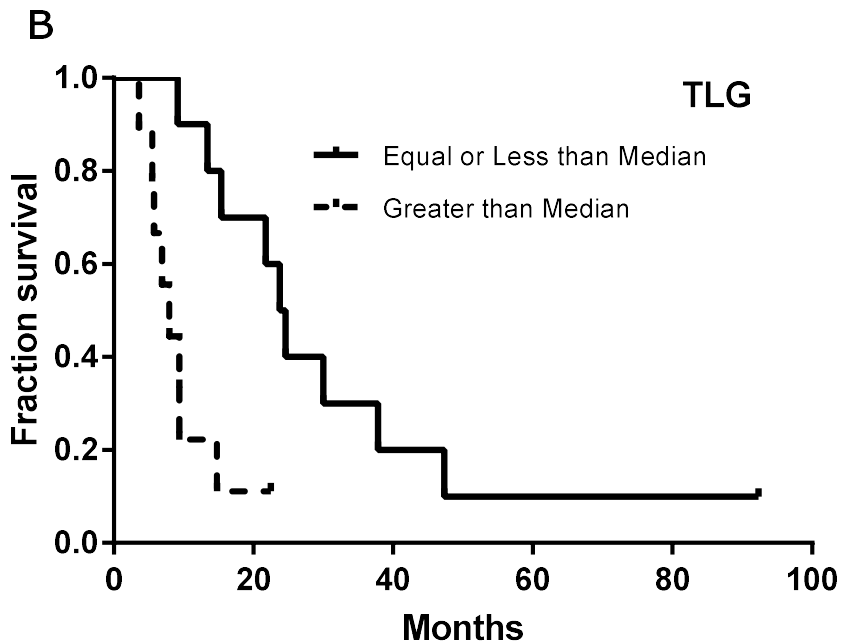
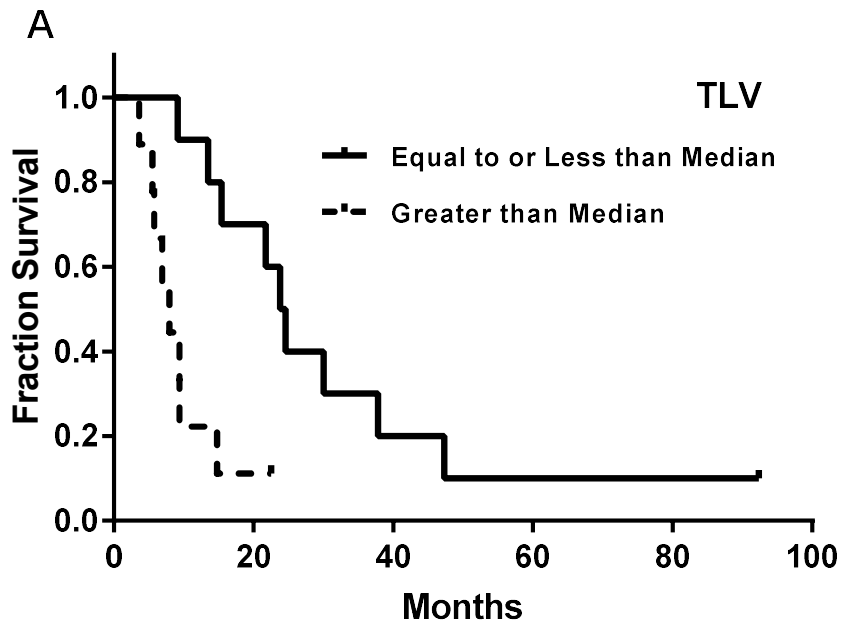


Figure 3. Kaplan-Meier plot of overall survival (OS). Measurements from FDG PET images of A) total lesion volume (TLV), and B) total lesion glycolysis (TLG) in 19 patients with pleural mesothelioma gave identical plots. For analysis patient groups were developed based on their median values of TLV and TLG.

	Median Value	Median OS (months) if value less than equal to median	Median OS (months) if value greater than median	P
TLV baseline (cc)	201	24.1	7.9	0.0031
TLG baseline (SUL-cc)	882	24.1	7.9	0.0031

Kaplan-Meier Analysis:

For Kaplan-Meier Analysis, FDG PET images of 19 patients with malignant pleural mesothelioma obtained before therapy were analyzed for Total Lesion Volume (TLV) and Total Lesion Glycolysis (TLG). Data were divided into two groups of 10 and 9 patients apiece (10 less than or equal to the median versus 9 greater than the median). Overall survival (OS) was calculated at the same time in months for treatment initiation (on- study date), until death resulting from any cause. A two-tailed log rank test was used to determine the significance of difference between each pair of curves based on the group parameters.

SUPPLEMENTAL FIGURE 4

Survival and SUL-average

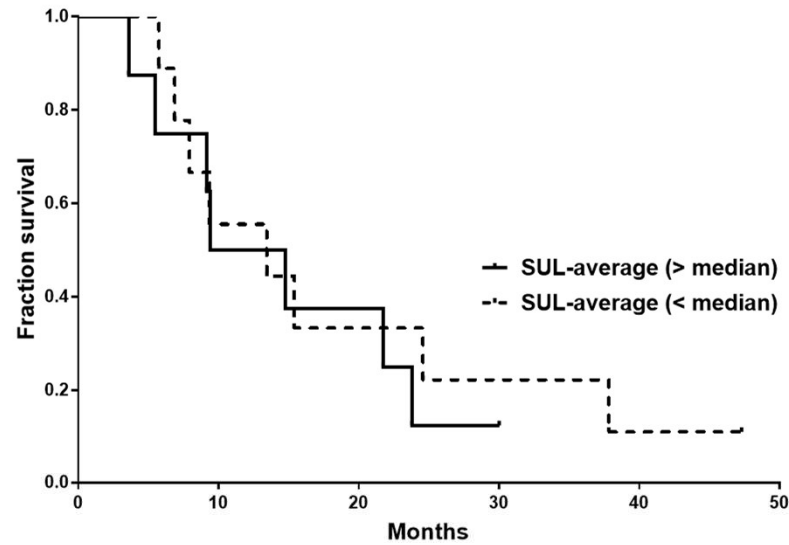


Figure 4. Kaplan-Meier Analysis, FDG PET images of 19 patients with malignant pleural mesothelioma obtained before therapy were analyzed for SUL-average calculated a SUL-total divided by the total number of voxels in the tumor. For analysis patient groups were developed based on their median values of SUL-average¶

¶	Median Value¶	Median OS (months) if value less than equal¶ to median¶	Median OS (months) if value greater than median¶	P¶
SUL-average baseline¶	3.64¶	12.09¶	13.4¶	0.65¶

¶