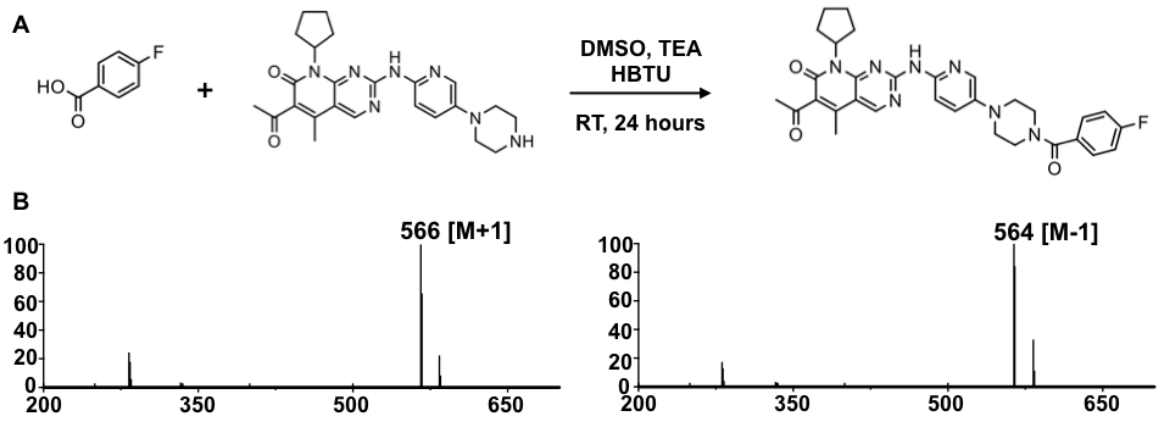
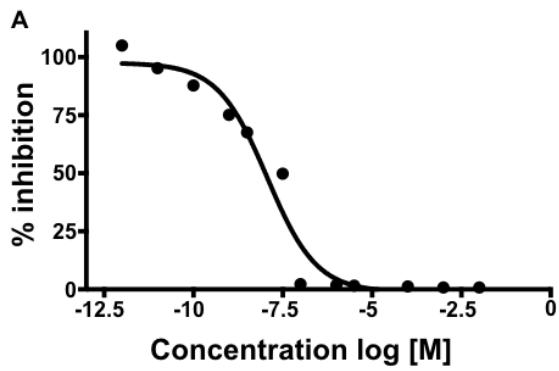


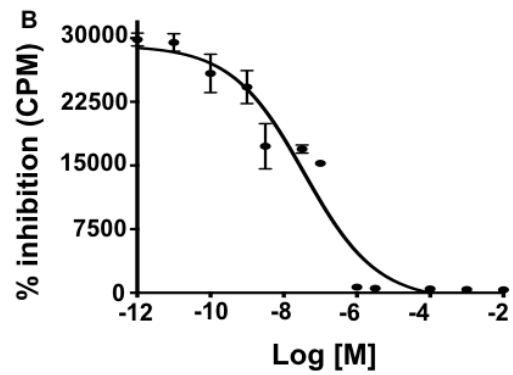
SUPPL. FIGURE 1: Synthetic radiolabeling strategy.



SUPPL. FIGURE 2: Synthetic radiolabeling strategy.

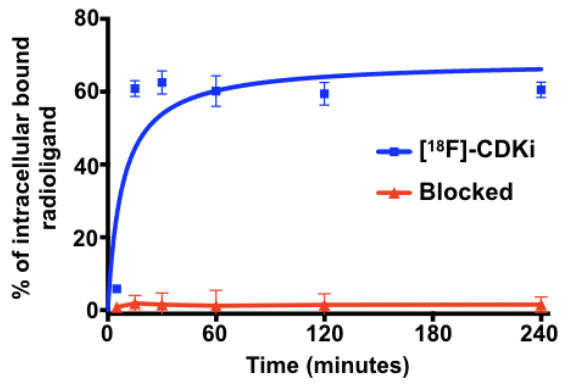


**ATP vs ¹⁹F-CDKi
Promega CellTiter-Glo®**

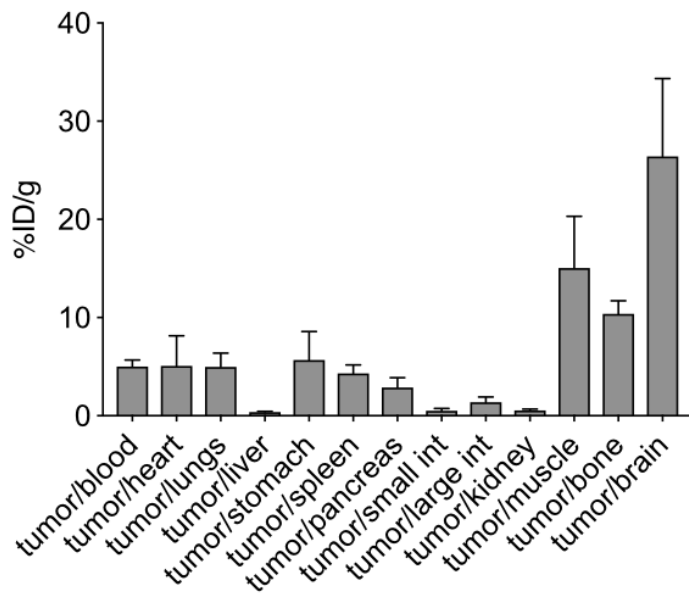


[¹⁸F]-CDKi vs. Palbociclib

SUPPL. FIGURE 3: IC50 determination



SUPPL. FIGURE 4: in vitro [¹⁸F]-CDKi uptake.



SUPPL. FIGURE 5: Tumor-to-non-target tissue ratio