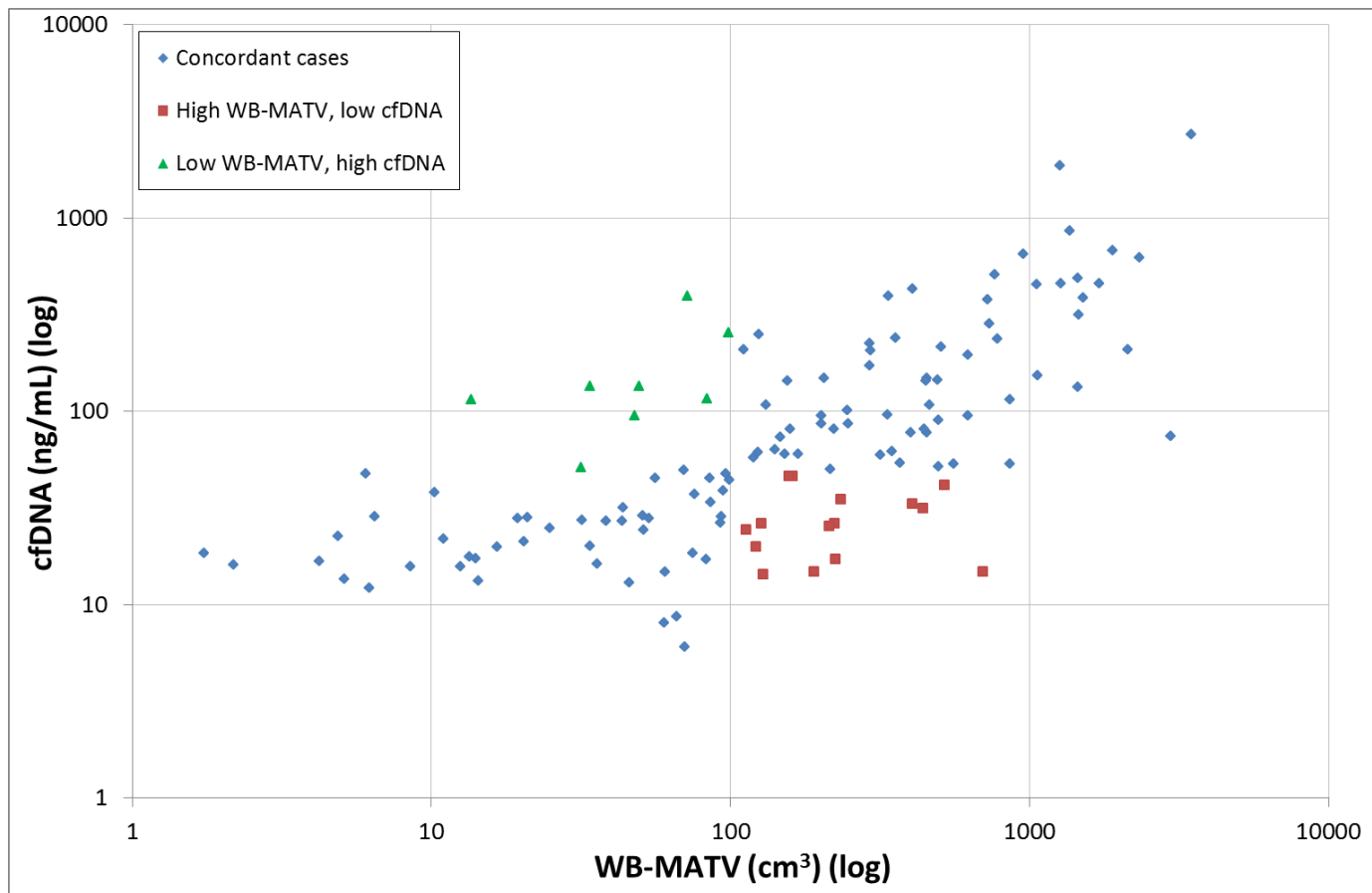
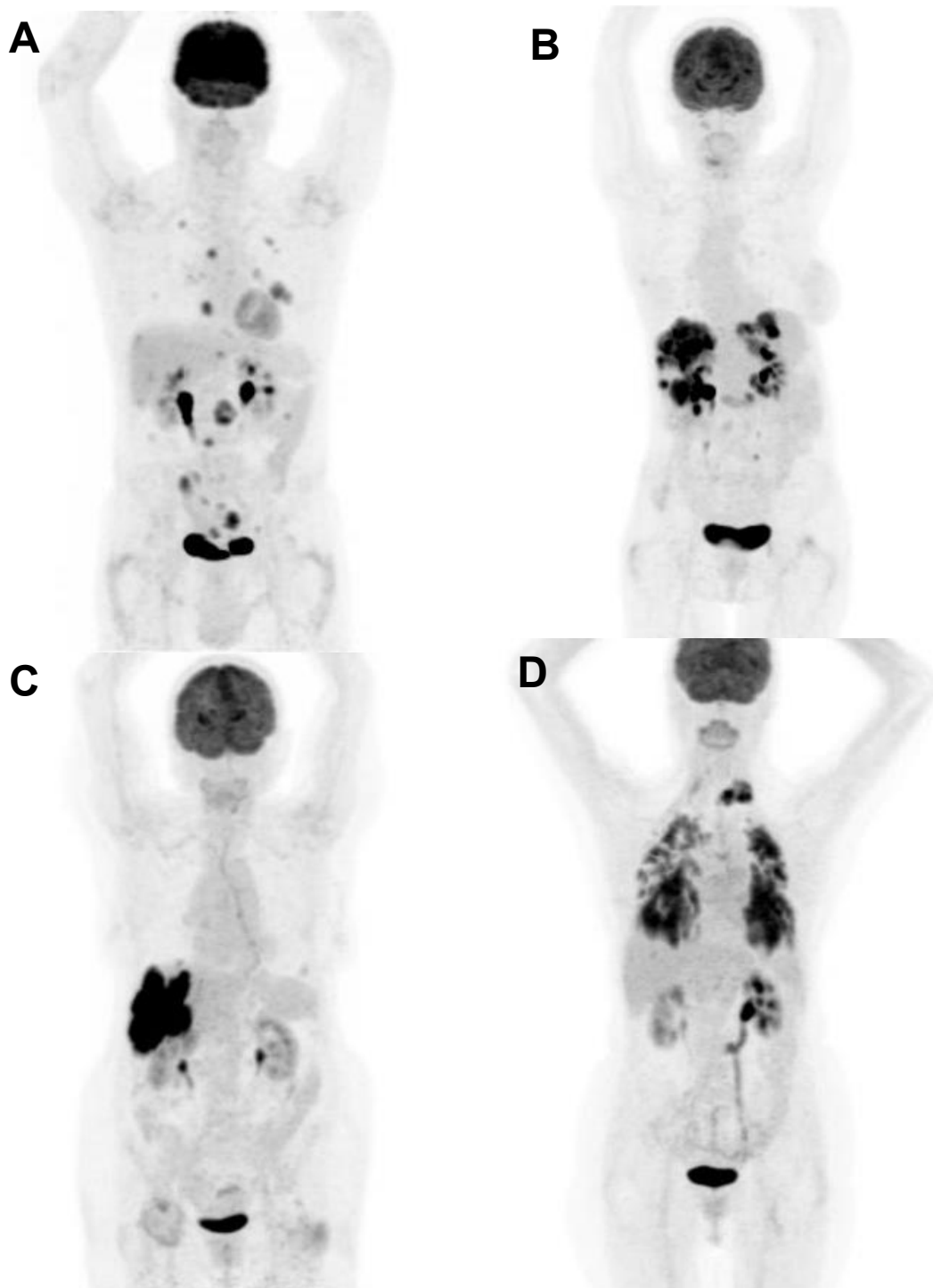


SUPPLEMENTAL FIGURE 1. Patient recruitment for the cfDNA-PET study from the RegARd-C trial.



SUPPLEMENTAL FIGURE 2. Correlation between baseline cfDNA and WB-MATV for a total of 132 patients. Each dot represents a patient's cfDNA and WB-MATV values. The x-axis for WB-MATV and y-axis for cfDNA are both represented using a logarithmic scale.



Supplemental FIGURE 3. Illustrations of patients with low baseline cfDNA (< 50 ng/mL) and high baseline WB-MATV (≥ 100 cm³). Patients with lung, lymph node, and peritoneum metastatic involvement (A), liver involvement (B, C), and lung and osteo-medullary involvement (D).