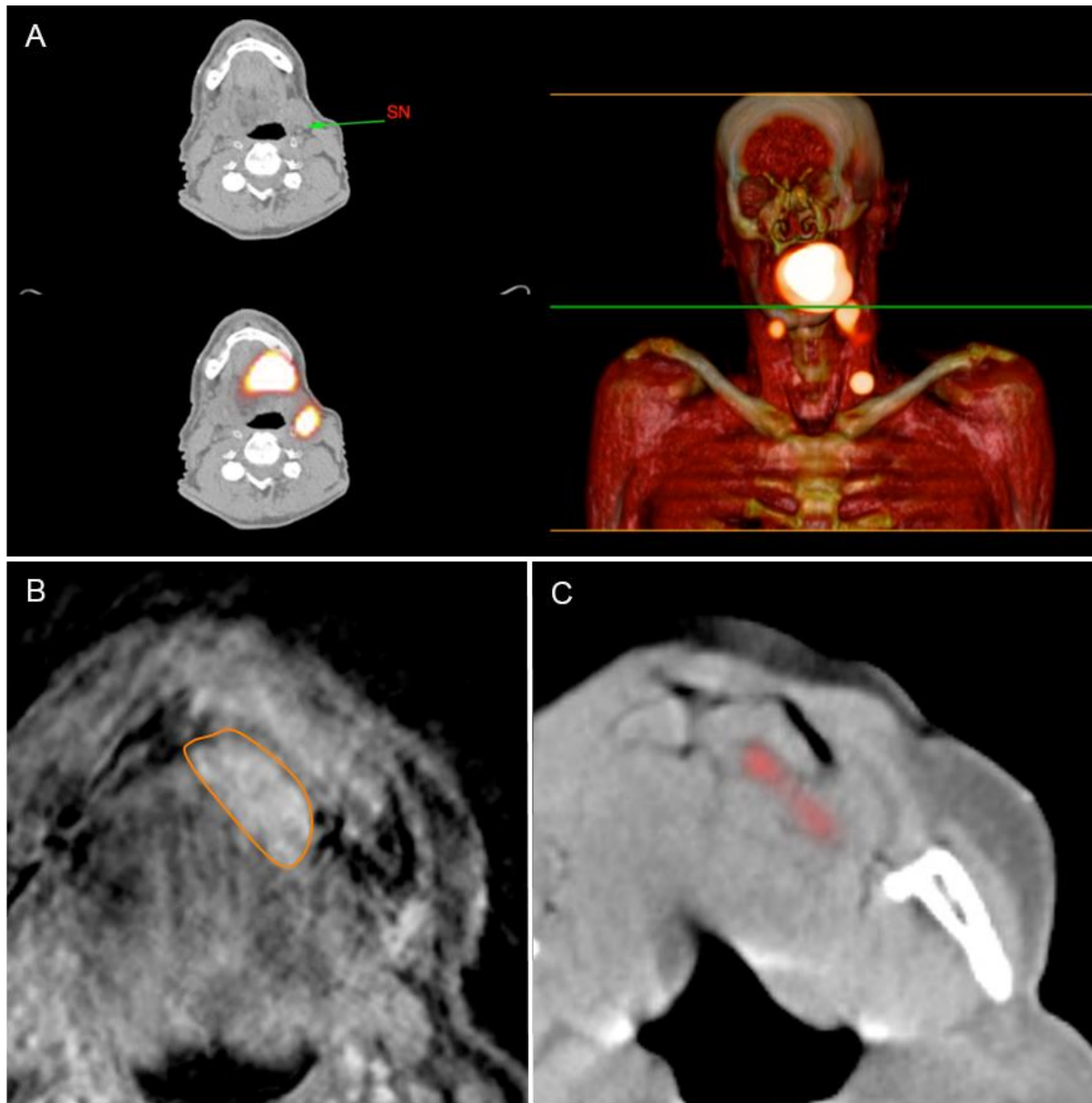


**SUPPLEMENTAL TABLE 1: Patient characteristics**

	<b>Tumor Tattooing</b>	<b>Standard SN procedure</b>	<b>P-value</b>
<b>No. of included patients</b>	12	19	0.587
<b>Male/female</b>	4/8	11/8	0.273
<b>Average age (years) ±SD</b>	61±11 (median 62.5) range 44-76	59±10 (median 60) range 42-75	
<b>Tumor stage</b>			1.000
<b>T1</b>	8	13	
<b>T2</b>	3	5	
<b>T2-3</b>	1	1	
<b>Tumor location oral tongue</b>			0.338
<b>Lateral, L</b>	6	7	
<b>Lateral, R</b>	5	12	
<b>Mid</b>	1	0	

No. = number; SD = standard deviation; T = tumor stage; L = left; R = right.



**SUPPLEMENTAL FIGURE 1.** Pre-operative imaging. (A) With SPECT/CT imaging the 3D position of the SNs can be visualized. (B) Magnetic Resonance Imaging of the tongue reveals the location of the tumor (orange area). (C) On SPECT/CT imaging separate injection depots were visualized after reducing the signal.