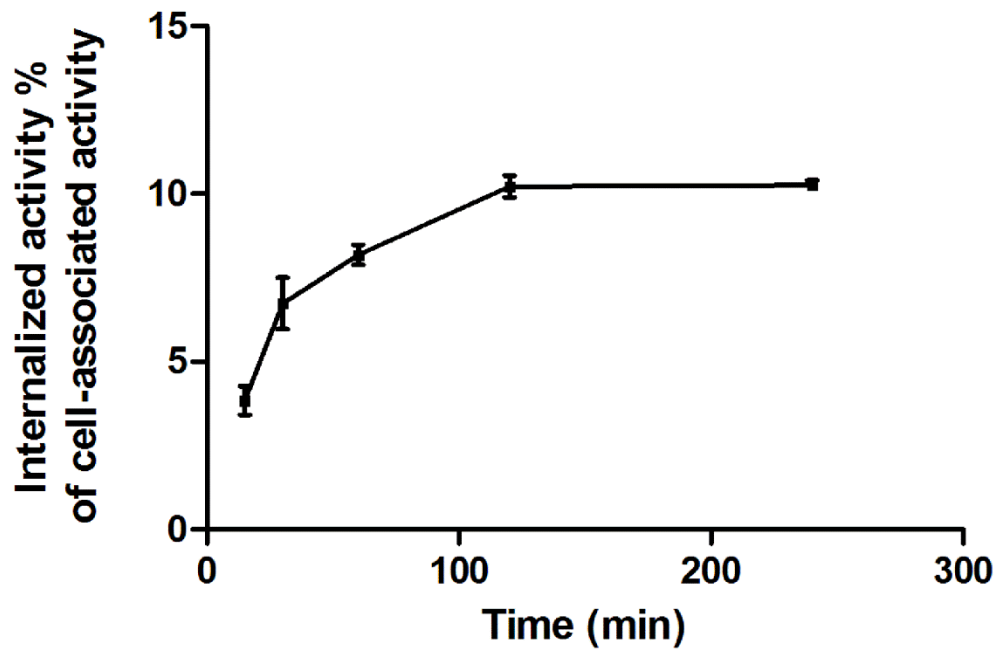
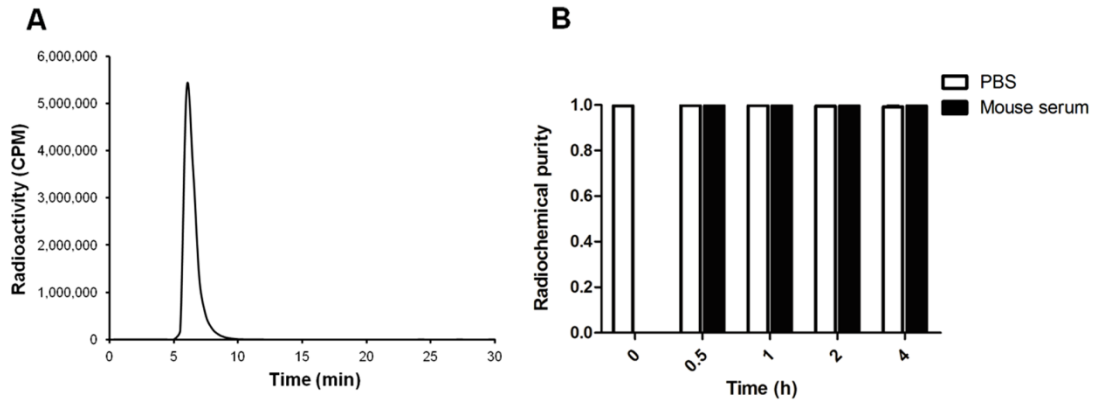


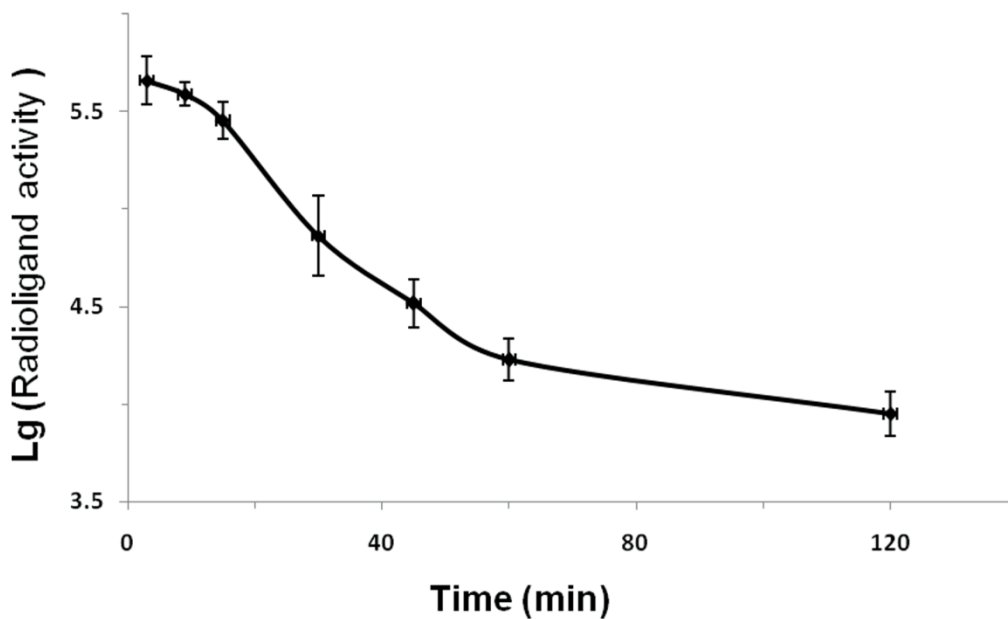
**Supplemental Fig. 1** The schematic diagram illustrates the process of radiochemical synthesis and molecular structure of  $^{99m}\text{Tc}$ -HYNIC-cMBP (A) and the specific binding of the tracer to c-Met receptor (B).



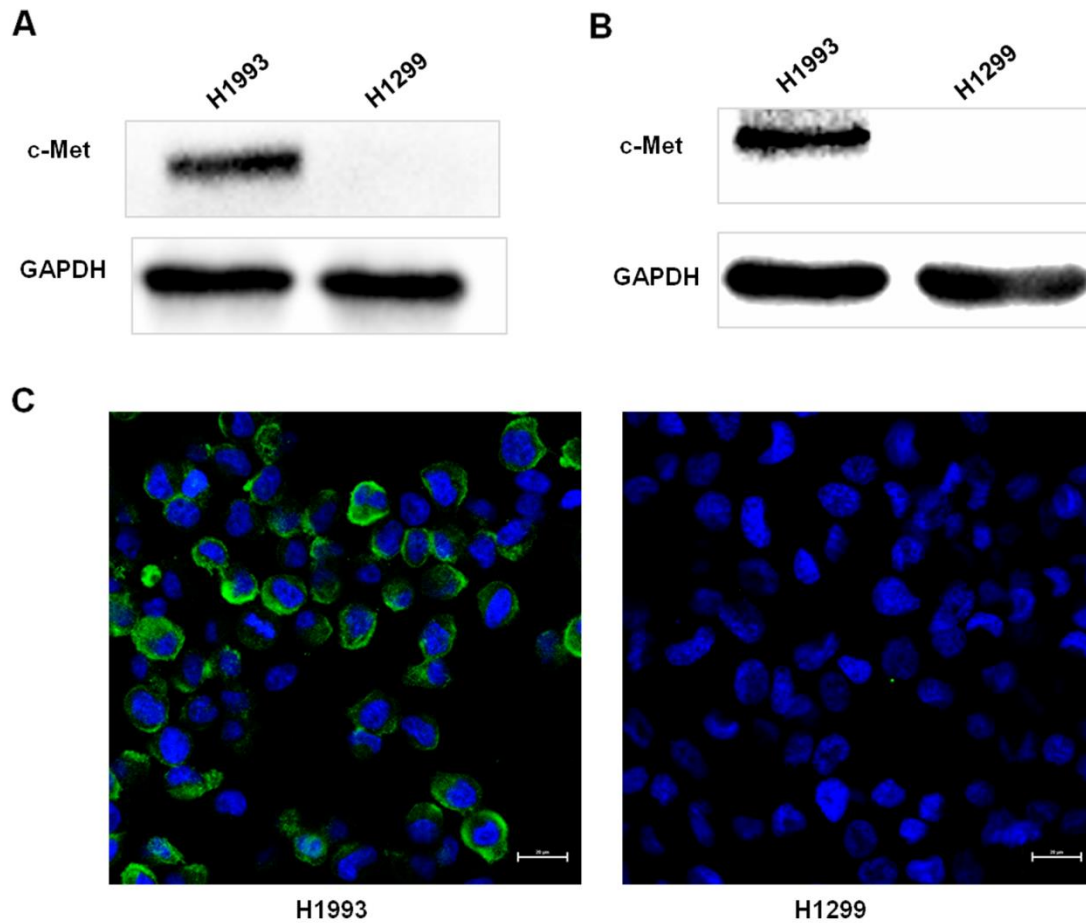
**Supplemental Fig. 2** Percent of internalized activity to cell-associated activity (membrane-bound + internalization).



**Supplemental Fig. 3** Radiochemical purity of  $^{99m}\text{Tc}$ -HYNIC-cMBP in PBS at 0 h after the tracer was prepared (A). *In vitro* stability analysis of the intact tracer by detected radiochemical purity of  $^{99m}\text{Tc}$ -HYNIC-cMBP in PBS and (or) mouse serum at 0-4 h after the tracer was prepared (B).



**Supplemental Fig. 4** Representative time-logarithmic value of activity curve of supernatant/plasma at 3, 9, 15, 30, 45, 60 and 120 min after injection of  $^{99m}\text{Tc}$ -HYNIC-cMBP.



**Supplemental Fig. 5** Western blot analysis of c-Met expression in H1993 and H1299 cell lines (A) and tumor tissues (B). Confocal images of immunofluorescence staining for c-Met expression in H1993 and H1299 cell lines (C).

**Supplemental Table 1:** Biodistribution of  $^{99m}\text{Tc}$ -HYNIC-cMBP in mice bearing H1993 tumors and in blocked H1993 groups at different time points.

Organ	0.5h		1h	2h	4h
	H1993	H1993-block			
<b>brain</b>	0.16±0.02	0.13±0.03	0.11±0.06	0.03±0.01	0.02±0.00
<b>heart</b>	1.59±0.39	1.46±0.33	0.69±0.11	0.20±0.04	0.24±0.04
<b>lung</b>	3.02±0.41	2.75±0.30	1.81±0.72	0.51±0.13	0.20±0.04
<b>liver</b>	5.92±0.57	5.75±0.95	4.92±1.36	3.75±1.57	2.58±1.52
<b>bone</b>	1.67±0.36	1.61±0.30	0.90±0.18	0.29±0.06	0.26±0.06
<b>kidney</b>	247.55±40.52	259.77±29.25	225.93±12.61	159.21±33.68	138.16±25.13
<b>stomach</b>	1.25±0.32	1.23±0.28	0.66±0.10	0.28±0.04	0.21±0.07
<b>intestine</b>	1.51±0.35	1.43±0.22	0.79±0.18	0.22±0.07	0.18±0.06
<b>blood</b>	8.32±2.45	7.80±1.25	1.99±0.19	0.72±0.37	0.83±0.08
<b>spleen</b>	2.30±0.11	2.08±0.52	1.76±0.30	1.16±0.77	1.03±0.18
<b>tumor</b>	4.74±1.43	1.03±0.43	2.84±0.28	0.87±0.13	0.75±0.14
<b>skin</b>	1.40±0.64	1.62±0.25	0.58±0.05	0.37±0.12	0.60±0.14
<b>muscle</b>	0.70±0.07	0.64±0.08	0.29±0.04	0.06±0.02	0.06±0.00

Values are mean ± SD and expressed as %ID/g (n=3)

**Supplemental Table 2:** Biodistribution of  $^{99m}\text{Tc}$ -HYNIC-cMBP in mice bearing H1299 tumors at different time points.

<b>Organ</b>	<b>0.5h</b>	<b>1h</b>	<b>2h</b>	<b>4h</b>
<b>brain</b>	0.14±0.03	0.07±0.003	0.03±0.01	0.04±0.01
<b>heart</b>	1.64±0.33	0.21±0.11	0.23±0.19	0.28±0.15
<b>lung</b>	3.26±0.33	1.65±0.39	0.46±0.29	0.32±0.10
<b>liver</b>	5.62±1.50	5.09±0.83	3.53±0.85	2.02±0.91
<b>bone</b>	1.30±0.49	0.57±0.03	0.36±0.06	0.25±0.03
<b>kidney</b>	252.66±44.37	207.49±15.19	174.14±41.35	143.95±50.02
<b>stomach</b>	1.13±0.22	0.43±0.07	0.33±0.05	0.28±0.14
<b>intestine</b>	1.45±0.65	0.69±0.31	0.21±0.05	0.21±0.03
<b>blood</b>	7.92±3.84	1.61±0.40	0.87±0.38	0.88±0.28
<b>spleen</b>	2.09±0.60	1.72±0.26	1.13±0.23	0.96±0.39
<b>tumor</b>	1.00±0.37	0.71±0.13	0.47±0.17	0.46±0.30
<b>skin</b>	1.08±0.16	0.99±0.24	0.52±0.15	0.52±0.15
<b>muscle</b>	0.57±0.27	0.22±0.03	0.08±0.03	0.06±0.03

Values are mean ± SD and expressed as %ID/g (n=3)