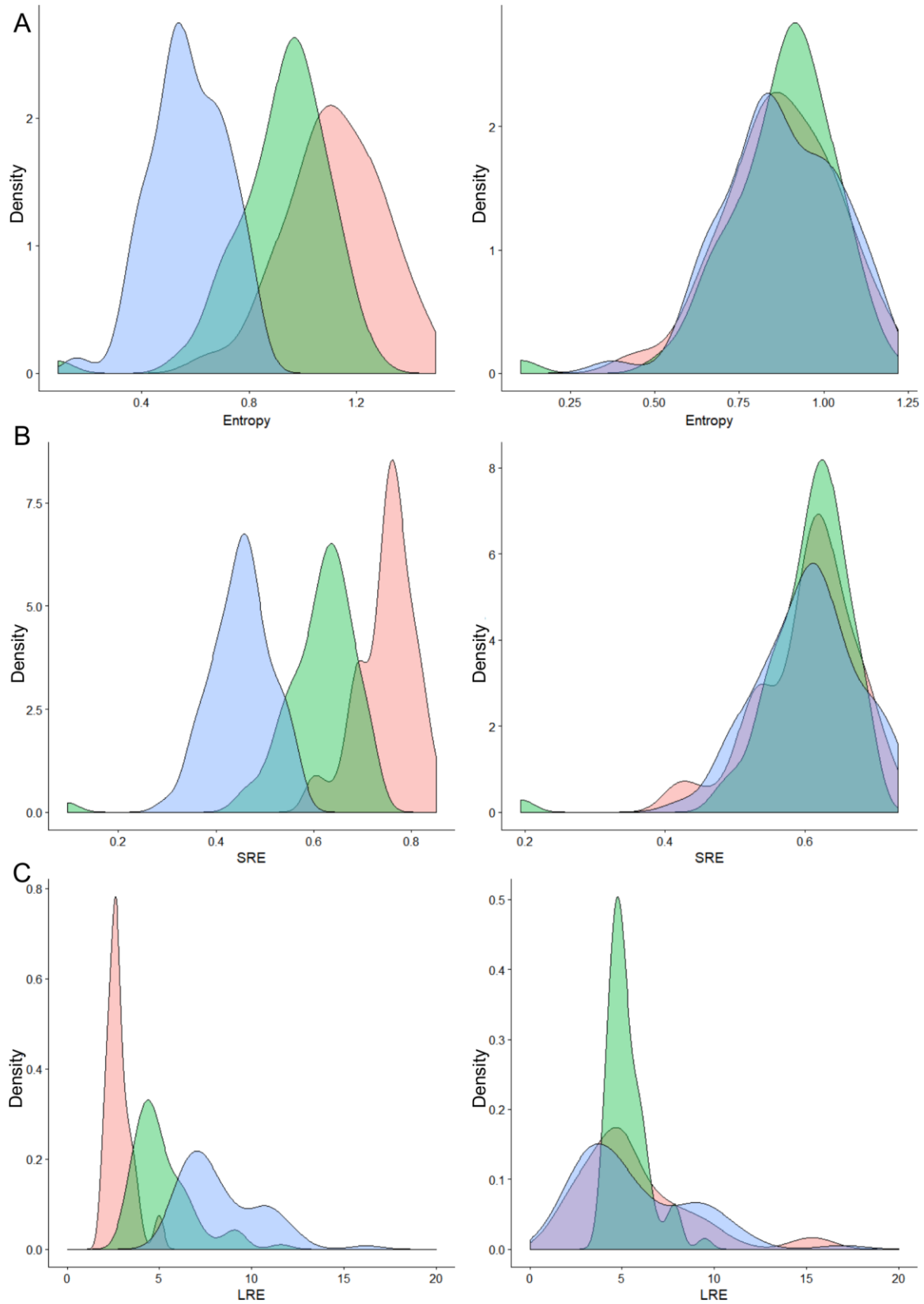
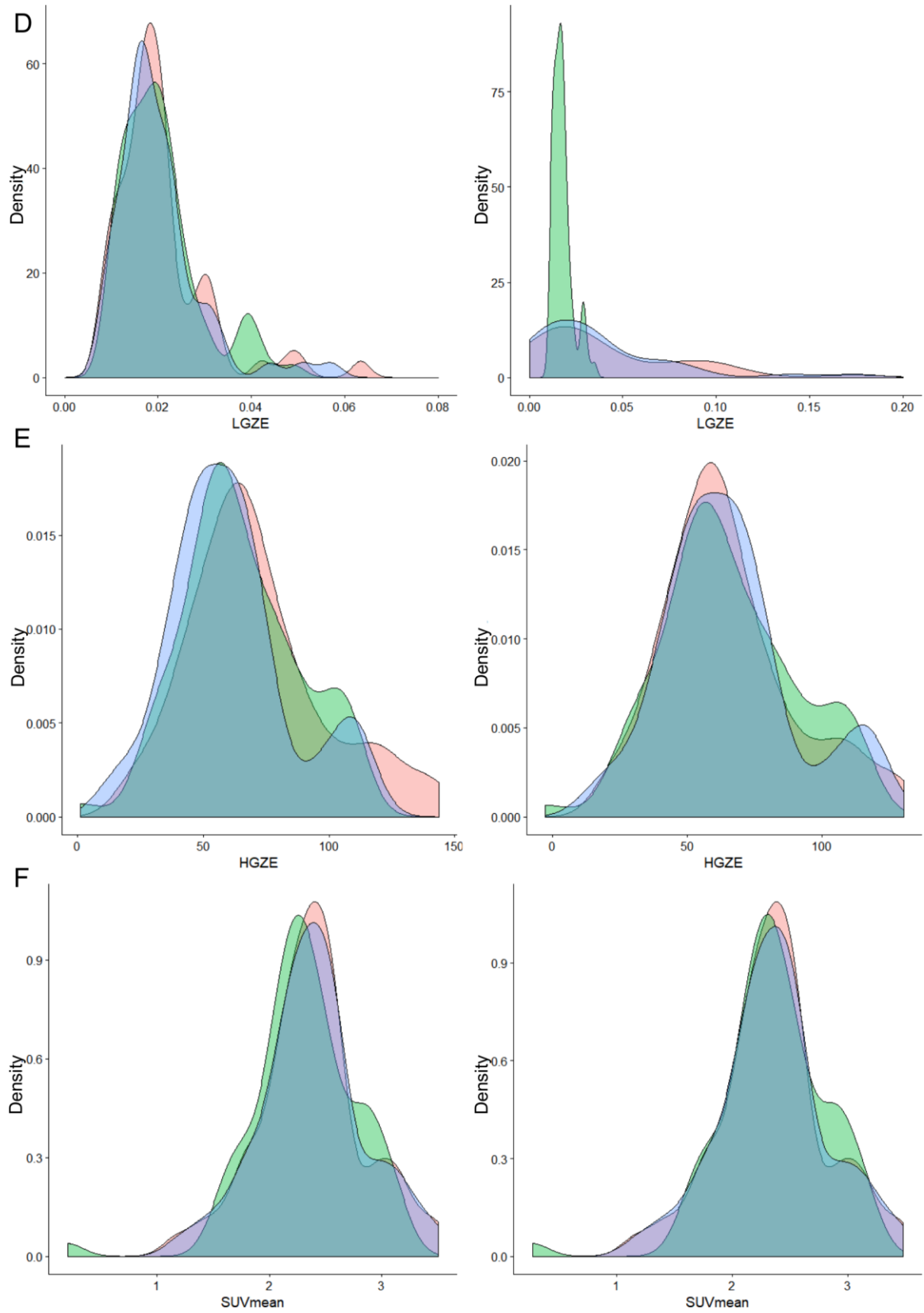
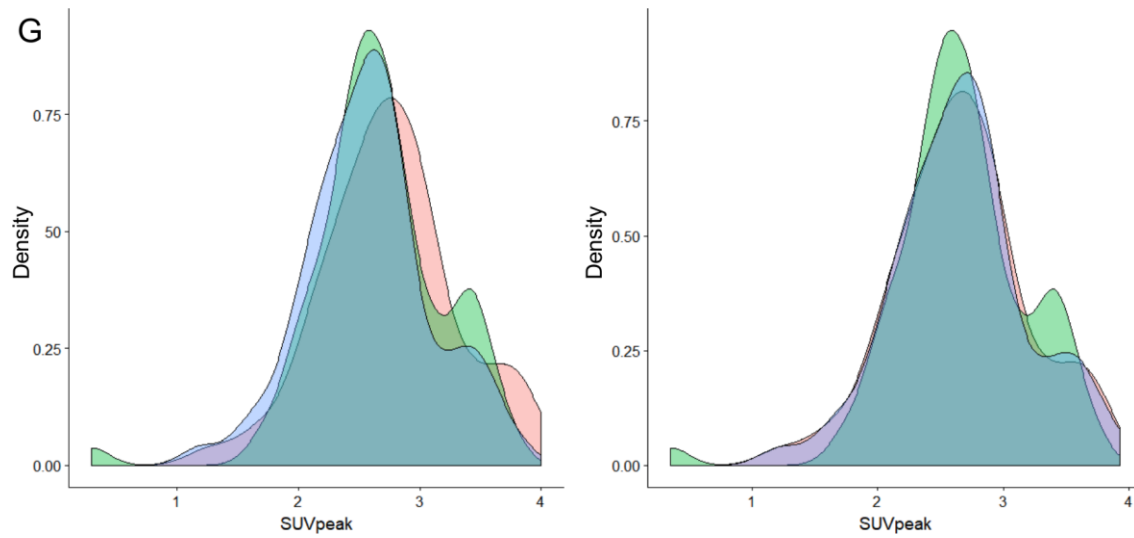


SUPPLEMENTAL FIGURE LEGEND

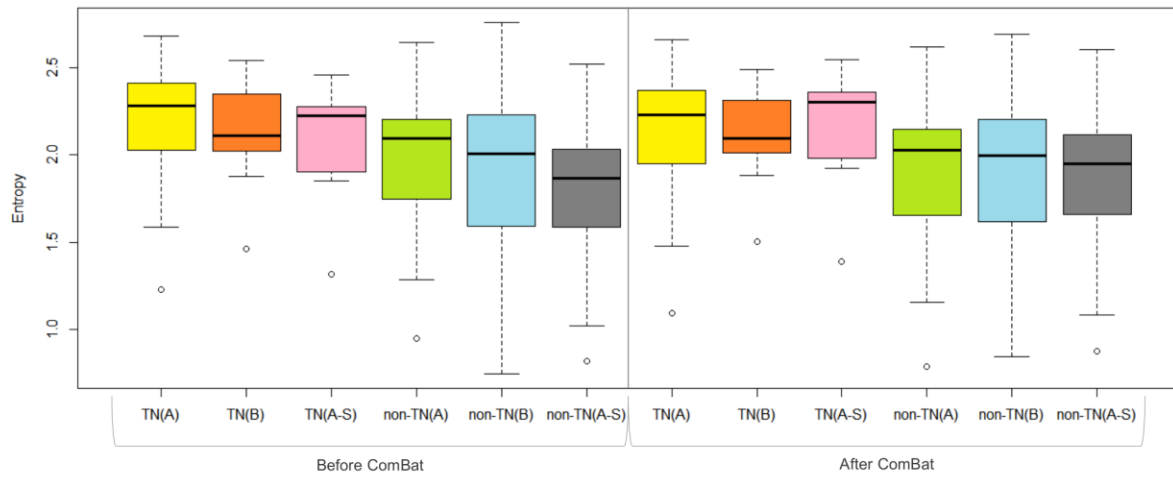




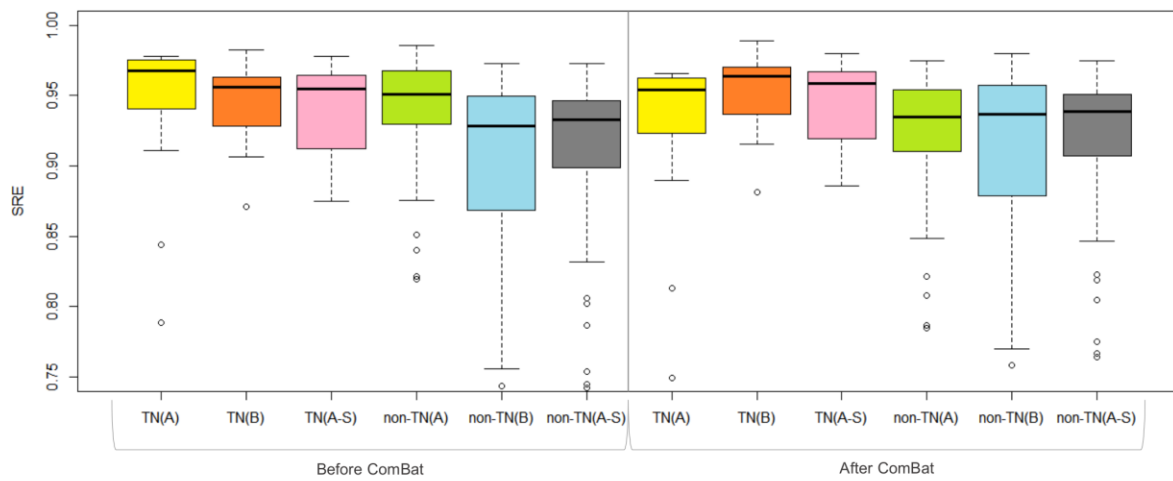


Supplemental Figure 1: Probability density function (%) of features from the liver tissue in Department A (pink), Department B (green) and Department A-S (blue), before (left) and after ComBat harmonization (right).

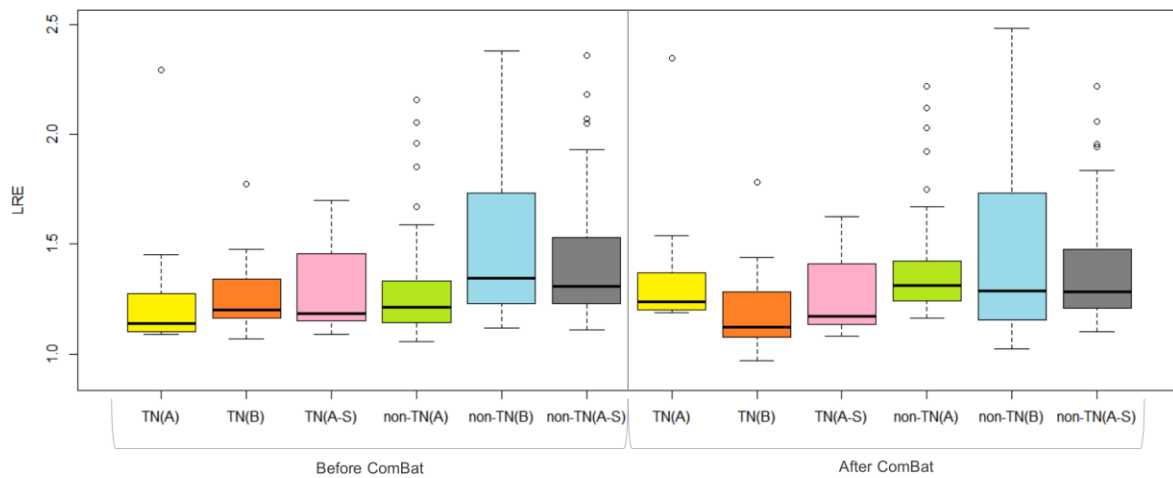
A



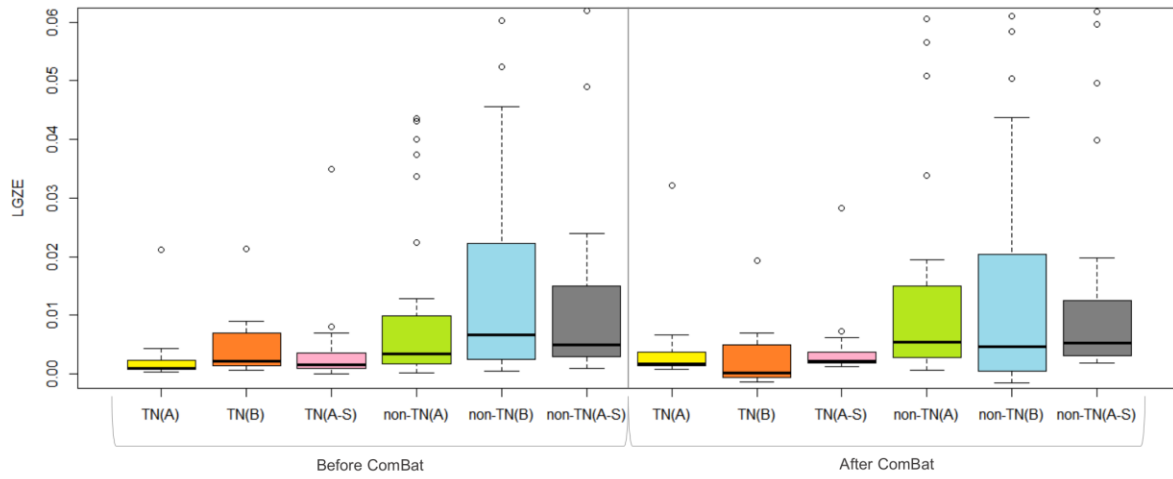
B



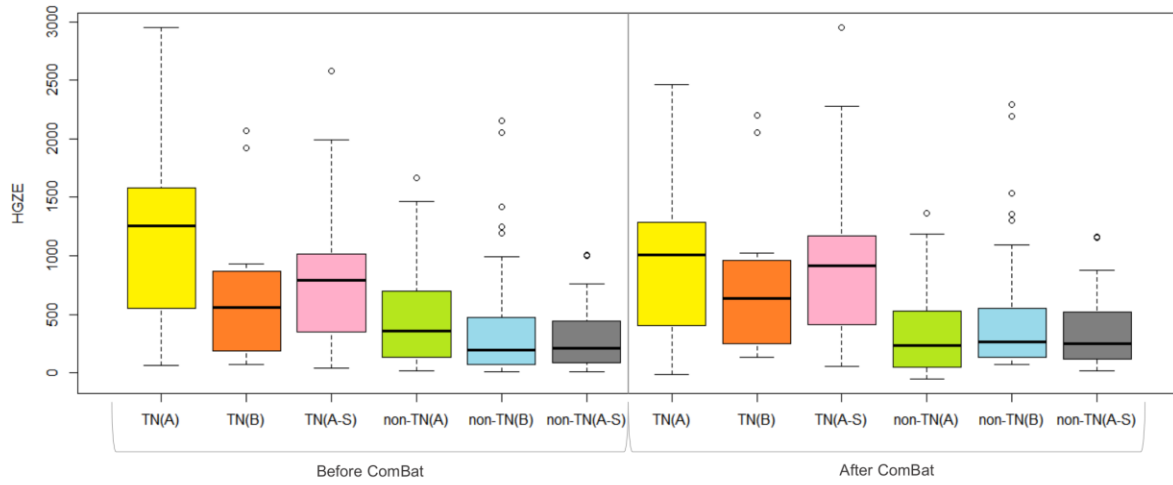
C



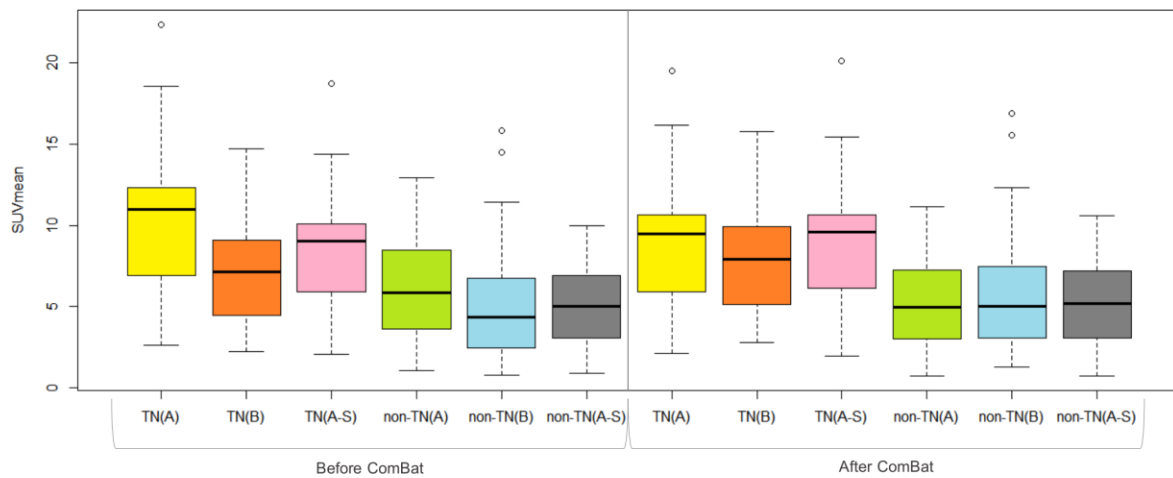
D



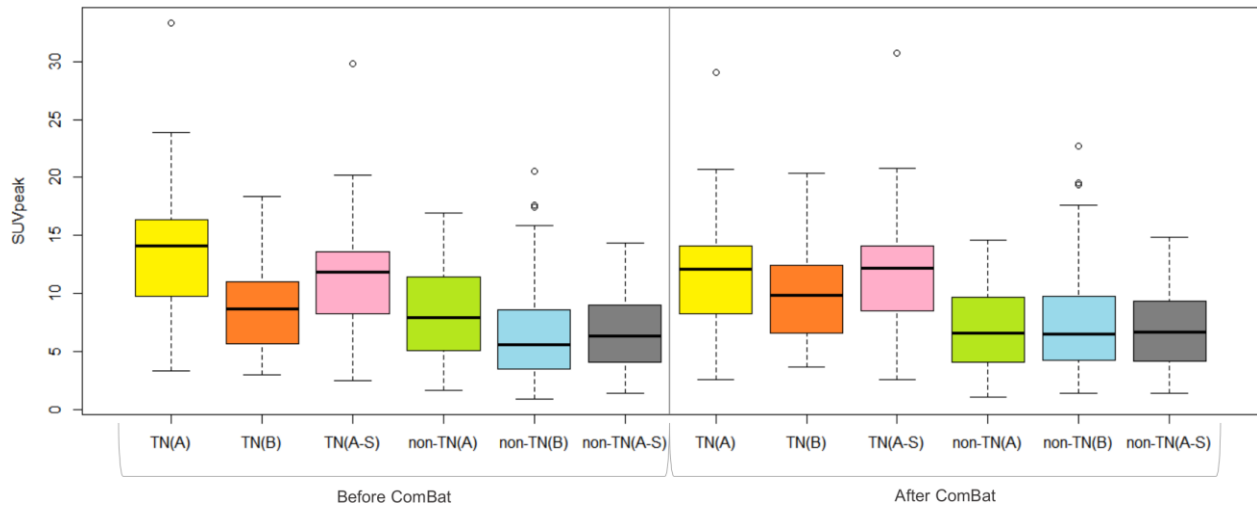
E



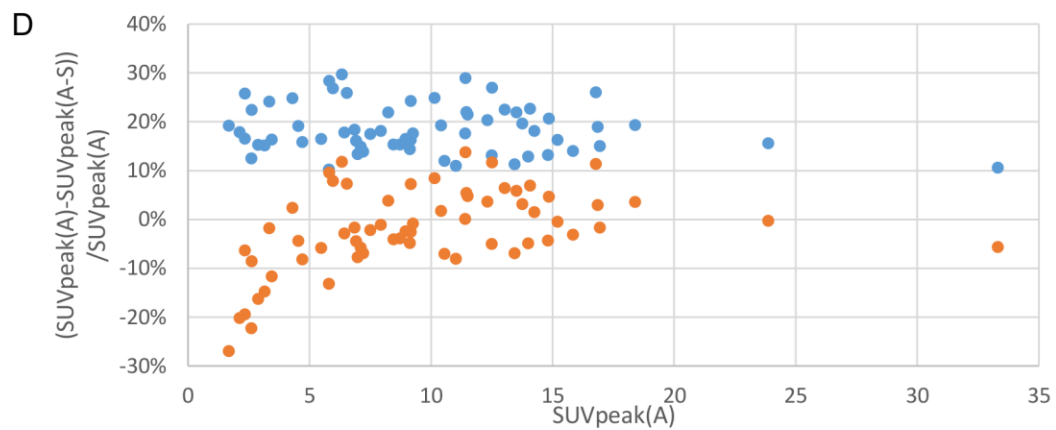
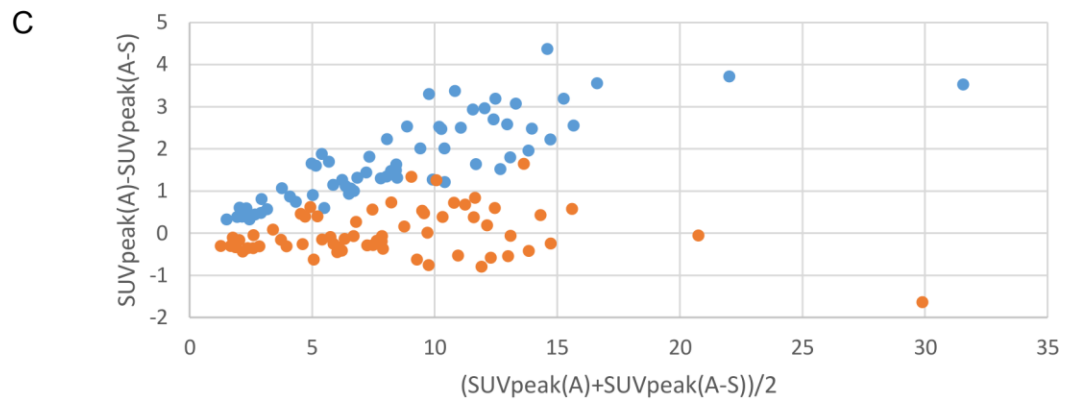
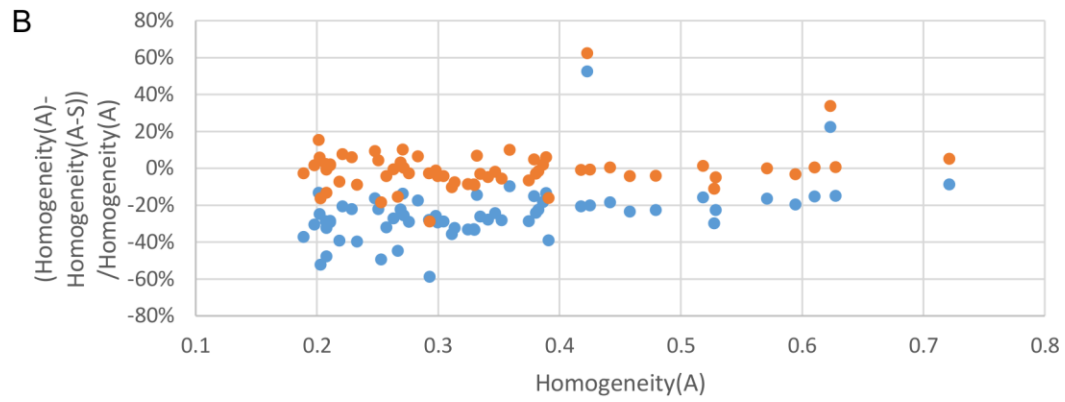
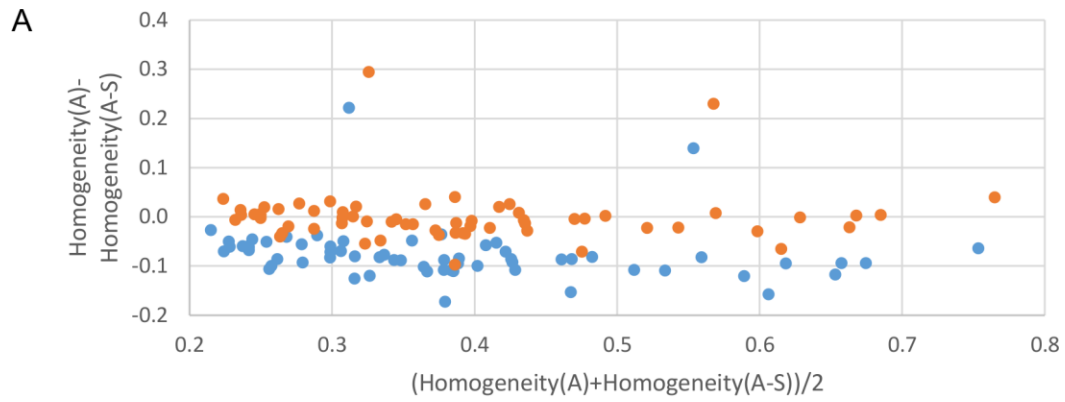
F



G

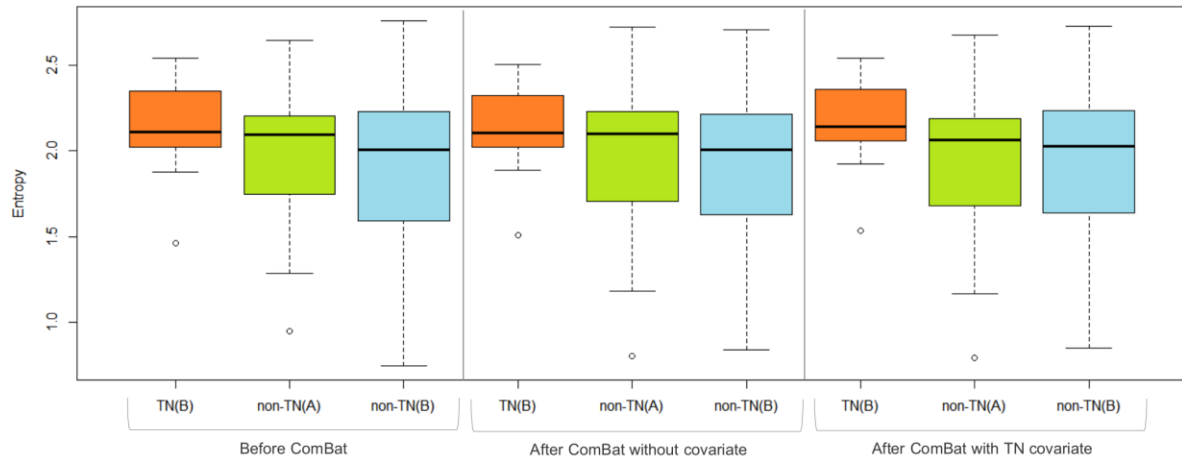


Supplemental Figure 2: Boxplots of features for triple-negative (TN) and non-triple-negative (non-TN) lesions before and after ComBat harmonization, for the three departments separately.

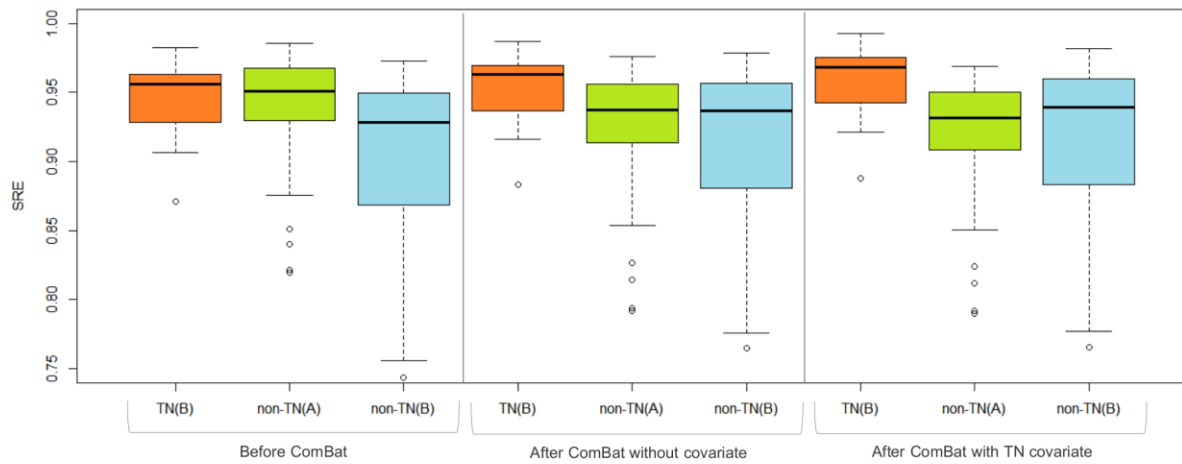


Supplemental Figure 3: Bland-Altman plots (A,C) and plots of the percentage difference between features from Department A and Department A-S (B,D) before (blue) and after ComBat harmonization (orange) in tumors for Homogeneity (A,B) and SUV_{peak} (C,D).

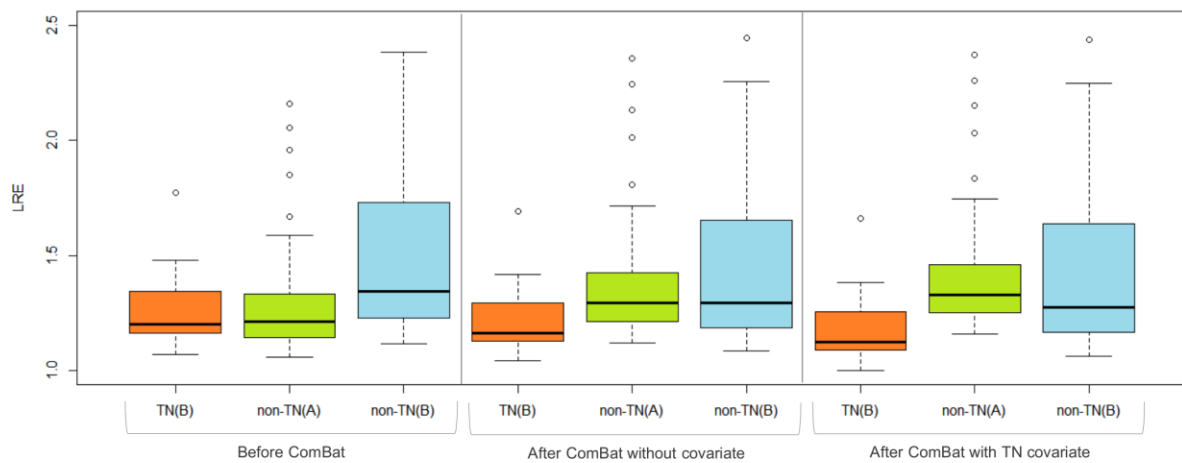
A



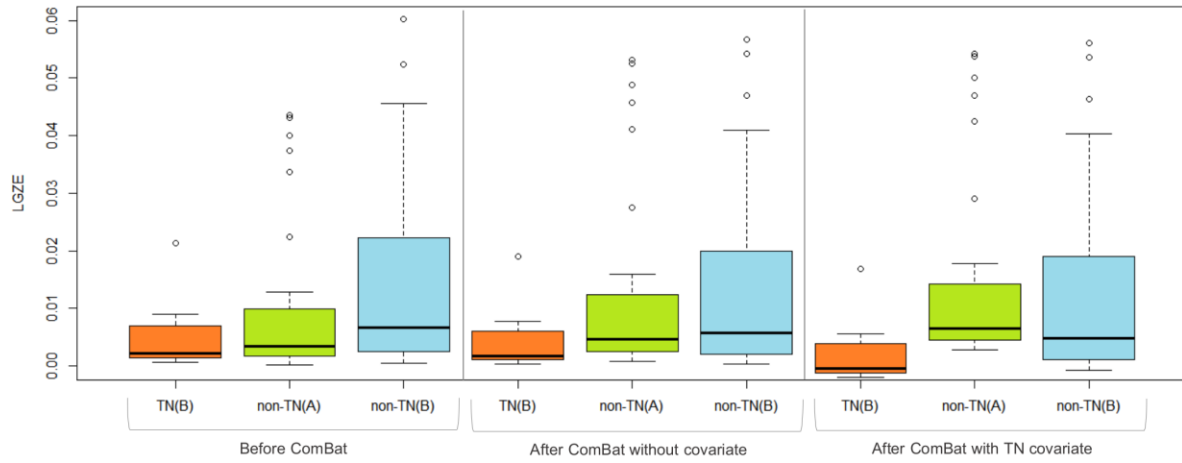
B



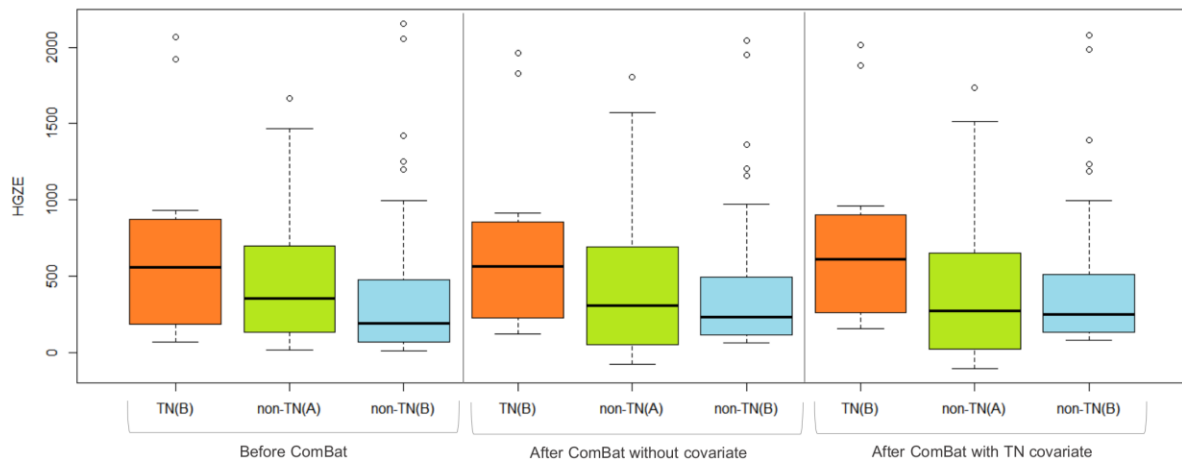
C



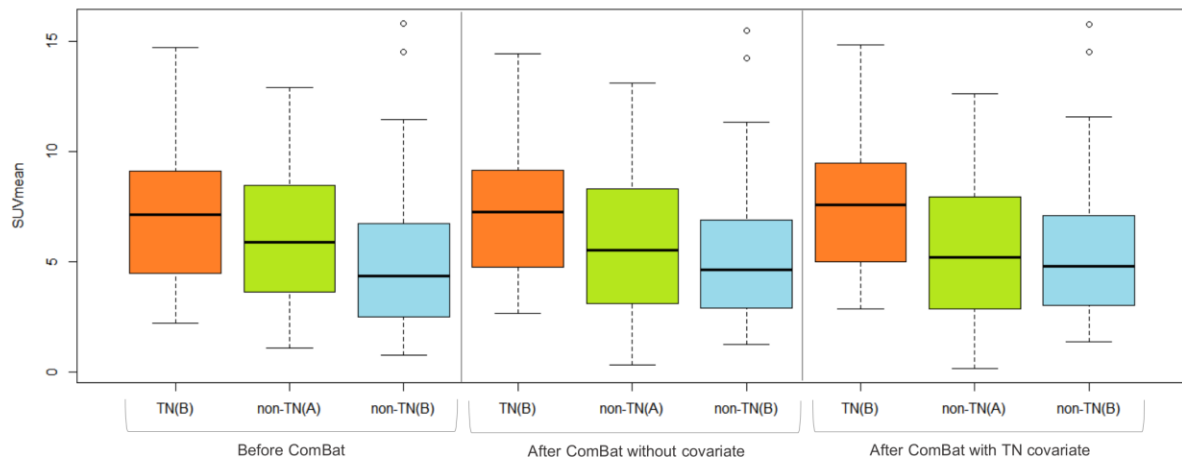
D



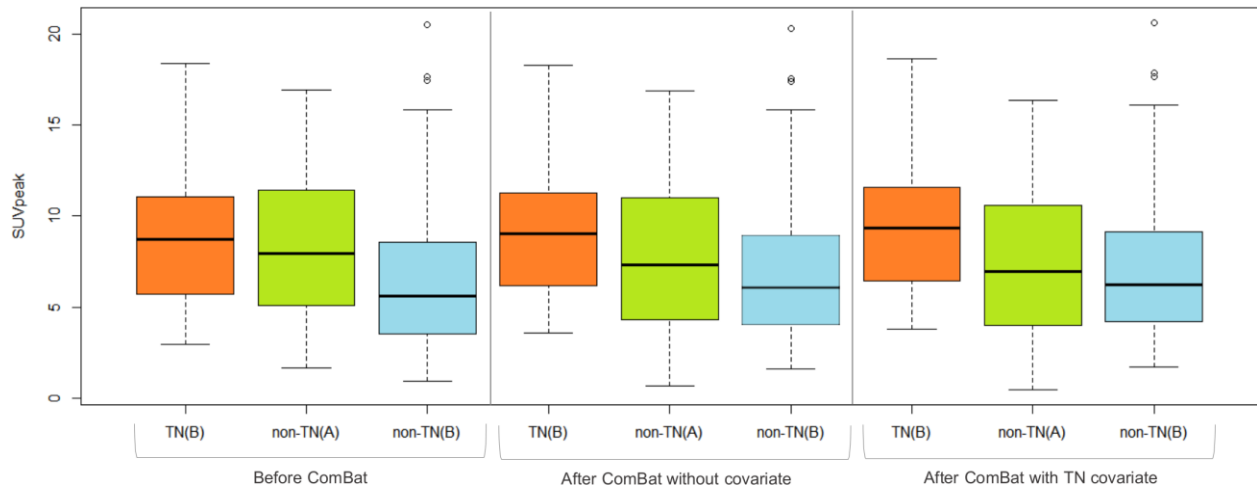
E



F



G



Supplemental Figure 4: Boxplots of features for triple-negative (TN) and non-triple-negative (non-TN) lesions before and after ComBat harmonization without and with TN status as a covariate, for Departments A and B separately when removing all TN in Department A to determine the transformations.

	Before ComBat						After ComBat			
	TN(A) vs non- TN(A)	TN(A-S) vs non- TN(A-S)	TN(A) vs TN(A-S)	non- TN(A) vs non- TN(A-S)	TN(A+A-S) vs non- TN(A+A-S)	TN(A-S) vs non- TN(A)	TN(A) vs TN(A-S)	non- TN(A) vs non- TN(A-S)	TN(A+A- S) vs non- TN(A+A- S)	TN(A- S) vs non- TN(A)
Homogeneity	0.0810	0.0103	0.1596	0.0006	0.0035	0.7965	0.6420	0.6034	0.0022	0.0124
Entropy	0.0205	0.0007	0.3809	0.0147	0.0001	0.0587	0.5147	0.7179	7.87e-05	0.0016
SRE	0.2175	0.0525	0.1835	0.0015	0.0282	0.7724	0.4016	0.7749	0.0241	0.0609
LRE	0.2618	0.0867	0.1713	0.0031	0.0428	0.8329	0.0938	0.5124	0.0457	0.0172
LGZE	0.0005	0.0003	0.1381	0.0472	1.77e-06	0.0327	0.2099	0.6899	1.50e-06	0.0041
HGZE	0.0002	0.0002	0.0938	0.0284	1.01e-06	0.0289	0.7804	0.6246	6.37e-07	0.0004
SUVmax	0.0006	0.0002	0.0731	0.0050	5.13e-06	0.1737	0.9556	0.9820	1.10e-06	0.0005
SUVmean	0.0003	0.0002	0.1381	0.0820	9.52e-07	0.0150	0.8965	0.9880	4.49e-07	0.0002
SUVpeak	0.0004	0.0002	0.2703	0.0660	1.23e-06	0.0196	0.8672	0.9940	6.01e-07	0.0003

Supplemental Table 1: P-values of Wilcoxon's test for all features between TN and non-TN lesions from Departments A and A-S, before and after ComBat harmonization. Bold values are less than 0.05.

	Before ComBat	After ComBat without TN Cov	After ComBat with TN Cov
Homogeneity	0.4635	0.0265	0.0039
Entropy	0.0875	0.1232	0.0254
SRE	0.9410	0.0203	0.0002
LRE	0.9352	0.0039	7.64e-05
LGZE	0.3786	0.0132	1.80e-06
HGZE	0.2886	0.1041	0.0254
SUVmax	0.4058	0.1192	0.0423
SUVmean	0.2394	0.0939	0.0359
SUVpeak	0.4736	0.1403	0.0478

Supplemental Table 2: P-values of Wilcoxon's tests for all features between TN in Department B and non-TN in Department A when the proportion of TN tumors was very different in the two departments, before and after ComBat harmonization without and with TN as a covariate of interest. Bold values are less than 0.05.