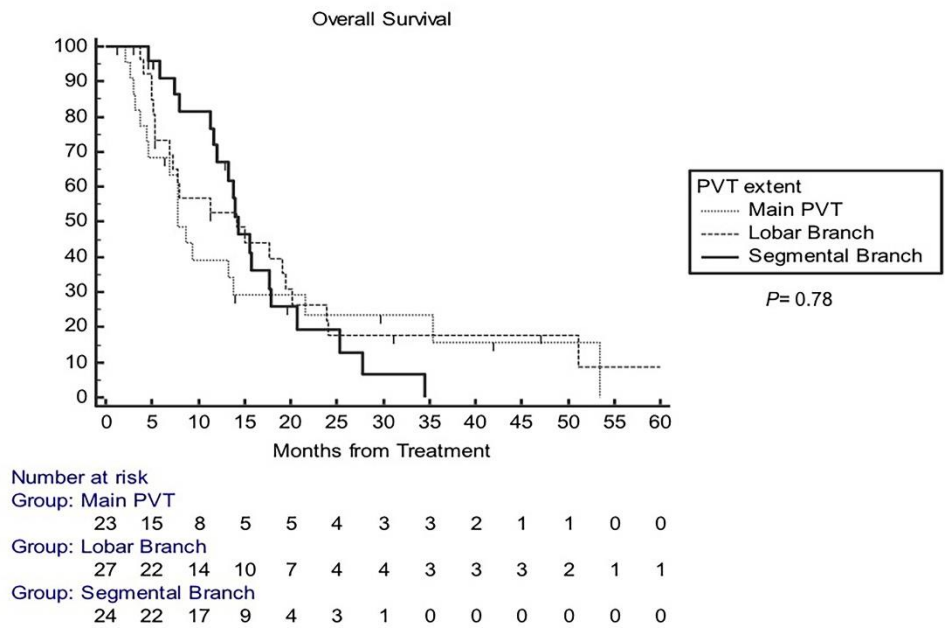
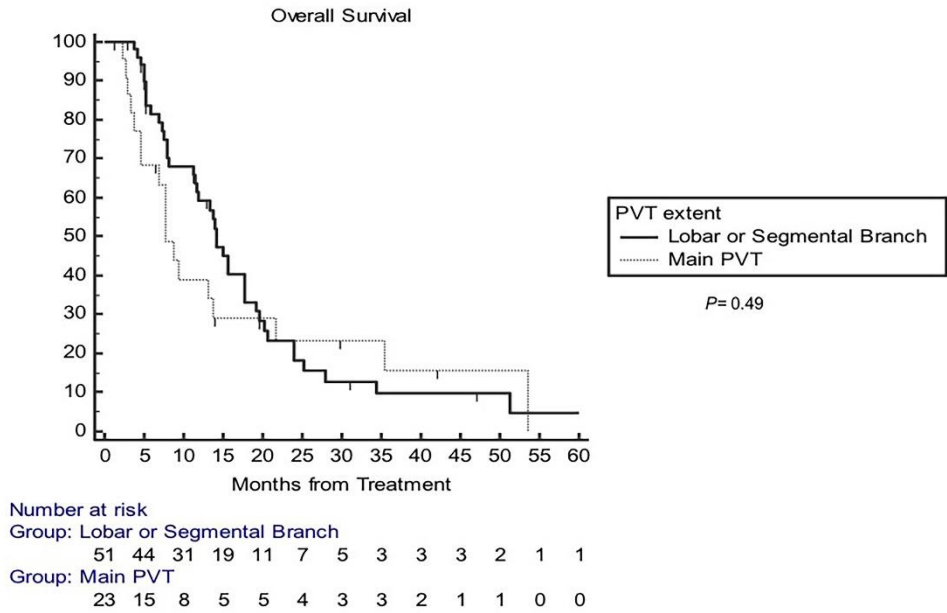


## Supplemental Table 1: Survival analysis based on AFP trends.

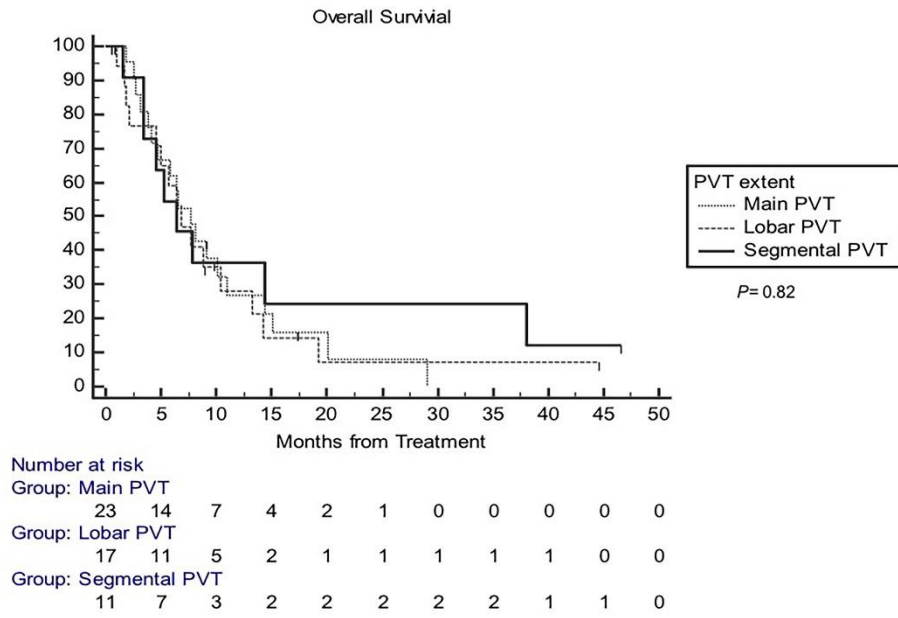
Landmark	Response	N (%)	median OS (95%CI)	P
<b>Baseline (n=185)</b>	<100	123 (66%)	11.4 (7.9-13.9)	0.05
	≥100	62 (34%)	6.5 (5-7.7)	
<b>AFP follow-up at any time point (n=101)</b>	Responders (AFP<13 ng/dL)	12 (12%)	23.9 (20-124)	<b>&lt;0.0001</b>
	Non / partial responders	89 (88%)	6.5 (4.8-7.8)	
<b>1-month (n=101)</b>	Responders (≥50% decrease from baseline)	49 (48%)	8.5 (6.5-14.3)	<b>0.018</b>
	Non-responders (<50% decrease from baseline)	52 (52%)	4.8 (3.7-7.7)	
<b>3-month (n=65)</b>	Responders (≥50% decrease from baseline)	43 (66%)	13.3 (8.7-17.7)	<b>0.021</b>
	Non-responders (<50% decrease from baseline)	22 (34%)	(5.3-8.9)	



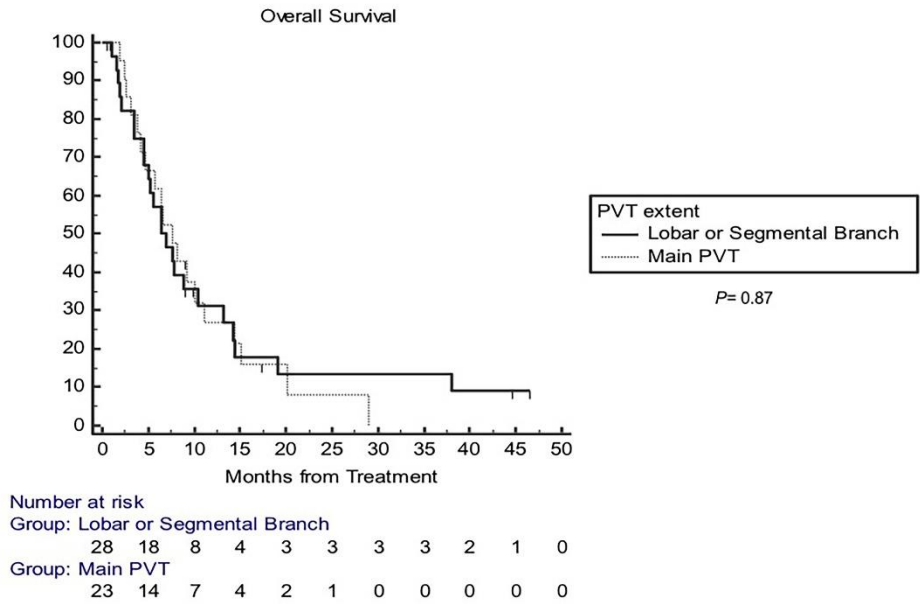
Supplemental Figure 1A: Overall Survival: CP A Main vs. Lobar Vs. Segmental



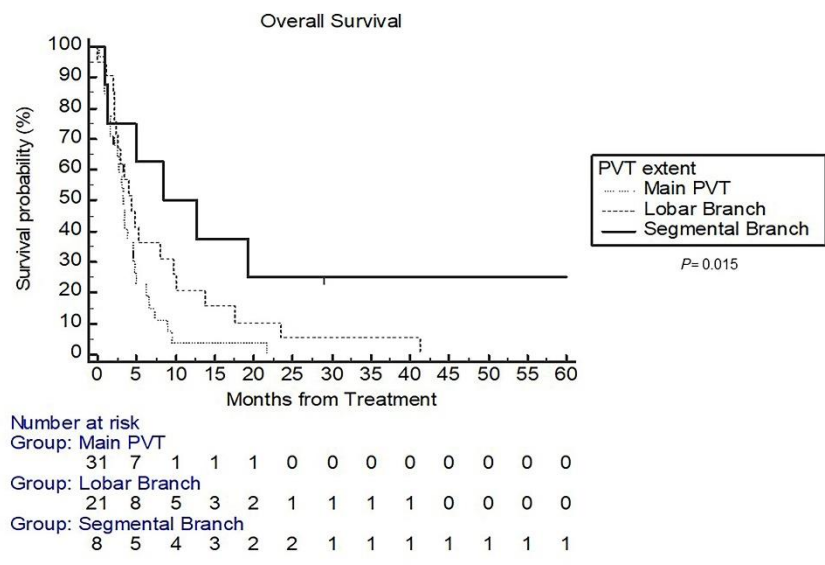
Supplemental Figure 1B: Overall Survival: CP A Main vs. Lobar/Segmental



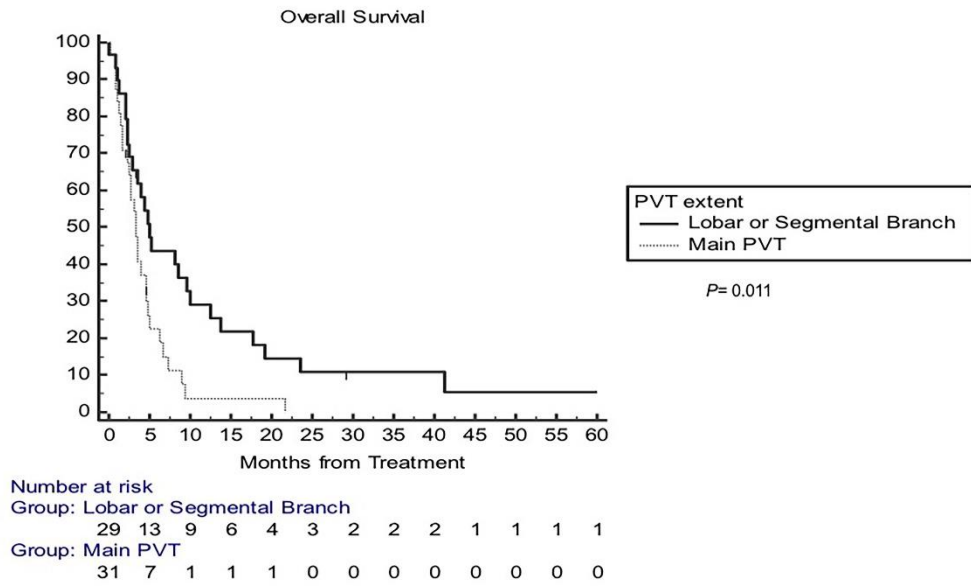
Supplemental Figure 2A: Overall Survival: CP B7 Main vs. Lobar vs. Segmental



Supplemental Figure 2B: Overall Survival: CP B7 Main vs. Lobar/Segmental



Supplemental Figure 3A: Overall Survival: CP  $\geq$ B8 Main vs. Lobar vs. Segmental



Supplemental Figure 3B: Overall Survival: CP  $\geq$ B8 Main vs. Lobar/Segmental