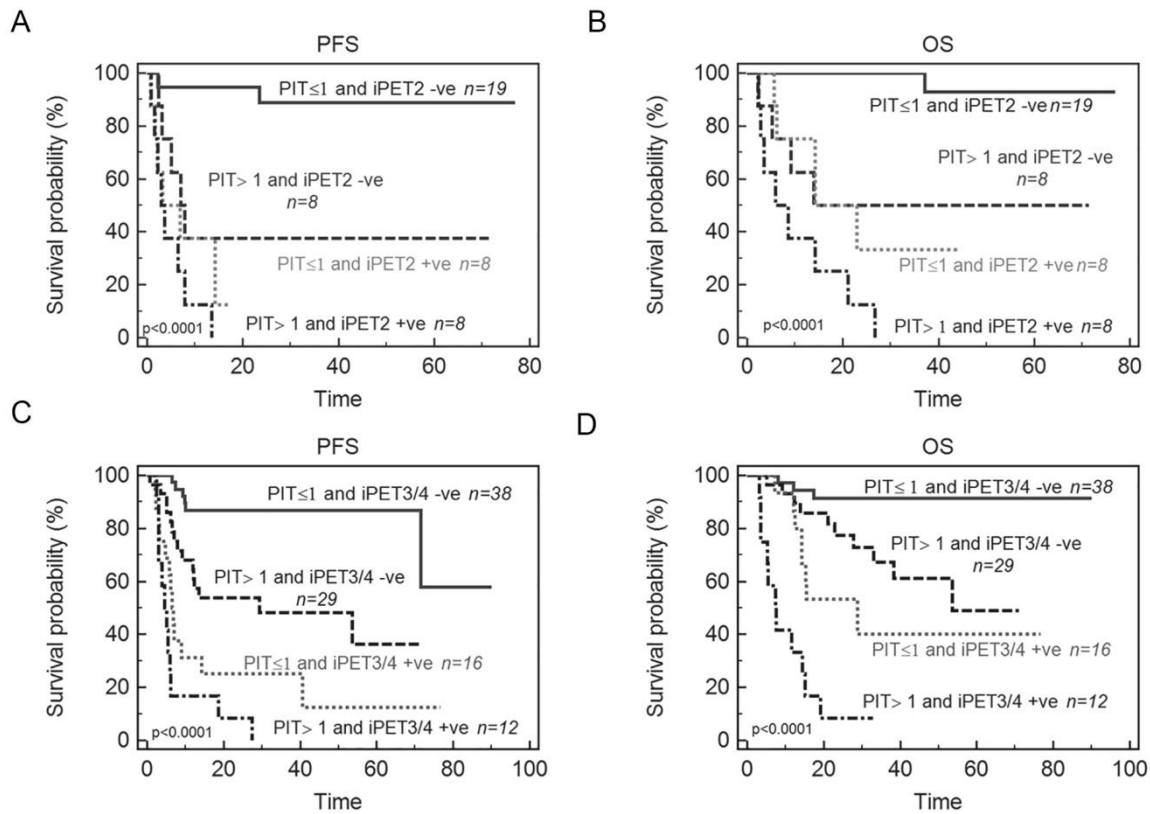


## Supplemental Figure 1

Kaplan Meier estimates of progression-free (PFS) and overall survival (OS) according to iPET2 combining with PIT score (A, B) and iPET3/4 combining with PIT (C, D).



Supplemental Table 1: Multivariate analysis testing PIT vs either iPET2, iPET3/4 or eotPET as cofactor for prediction of PFS and OS respectively.

	PFS			OS		
	HR	95% CI	<i>P</i>	HR	95% CI	<i>P</i>
<b>iPET2 positive</b>	6.8	2.54 to 18.05	0.0001	5.8	1.94 to 17.31	0.0017
PIT>1	3.0	1.21 to 7.58	0.018	4.5	1.64 to 12.40	0.0038
<b>iPET3/4 positive</b>	7.0	3.78 to 12.88	<0.0001	8.4	3.96 to 17.95	<0.0001
PIT>1	3.1	1.69 to 5.78	0.0003	4.1	1.95 to 8.75	0.0002
<b>EotPET positive</b>	15.6	7.20 to 33.96	<0.0001	24.3	8.93 to 65.95	<0.0001
PIT>1	2.0	1.0351 to 4.0054	0.04	1.2	0.513 to 2.44	0.78