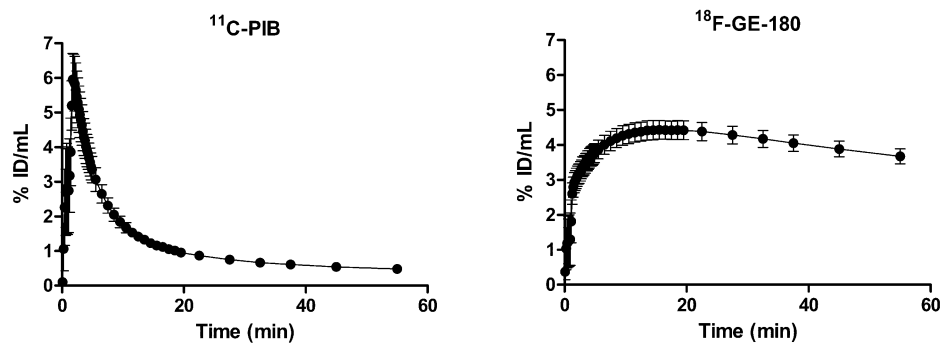


Supplemental figure 1. ¹¹C-PIB and ¹⁸F-GE-180 uptake in the cerebellum (CB) of tg and wt APP23 mice from 17 to 26 months expressed as standardized uptake values (SUV).



Supplemental figure 2. Representative ¹¹C-PIB and ¹⁸F-GE-180 time activity curves (TACs) as %ID/mL(Average ± SD of 6 wt mice)

Supplemental table 1. Percentage of ¹¹C-PIB and ¹⁸F-GE-180 increase uptake of TG vs WT 26 mo mice in the *in vivo* and *ex vivo* studies. FC = frontal cortex, PTC = Parietotemporal cortex, Hippo = Hippocampus, THA = Thalamus, CB = Cerebellum.

	¹¹ C-PIB		¹⁸ F-GE-180	
	<i>In vivo</i>	<i>Ex vivo</i>	<i>In vivo</i>	<i>Ex vivo</i>
	(%)	(%)	(%)	(%)
FC/CB	186	172	25	42
PTC/CB	137	133	30	38
HIPPO/CB	124	76	21	39
THA/CB	57	69	6	19