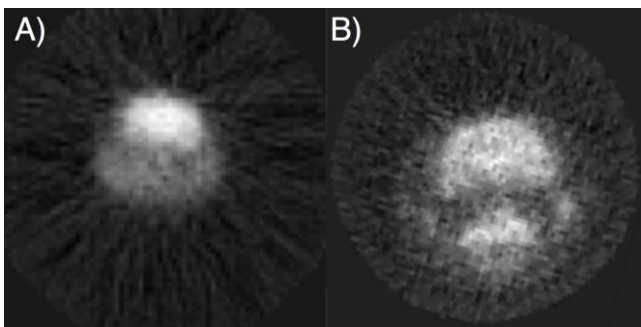


SUPPLEMENTAL FIGURE 1. Reconstructed images of the NEMA NU 4-2008 image quality phantom. Images (a)-(c) show the three sections of the phantom reconstructed with FBP-3DRP, and (e)-(g) reconstructed with PSF-MLEM, all $42 \times 42 \text{ mm}^2$. Rod diameters are 1, 2, 3, 4, and 5 mm. Image (d) shows a $68 \times 42 \text{ mm}^2$ axial section through the stitched-together FBP-3DRP reconstructions.



SUPPLEMENTAL FIGURE 2. ^{18}F -FDG images of a mouse brain (a) and a rat brain (b) reconstructed with FBP-3DRP, both $42 \times 42 \text{ mm}^2$.