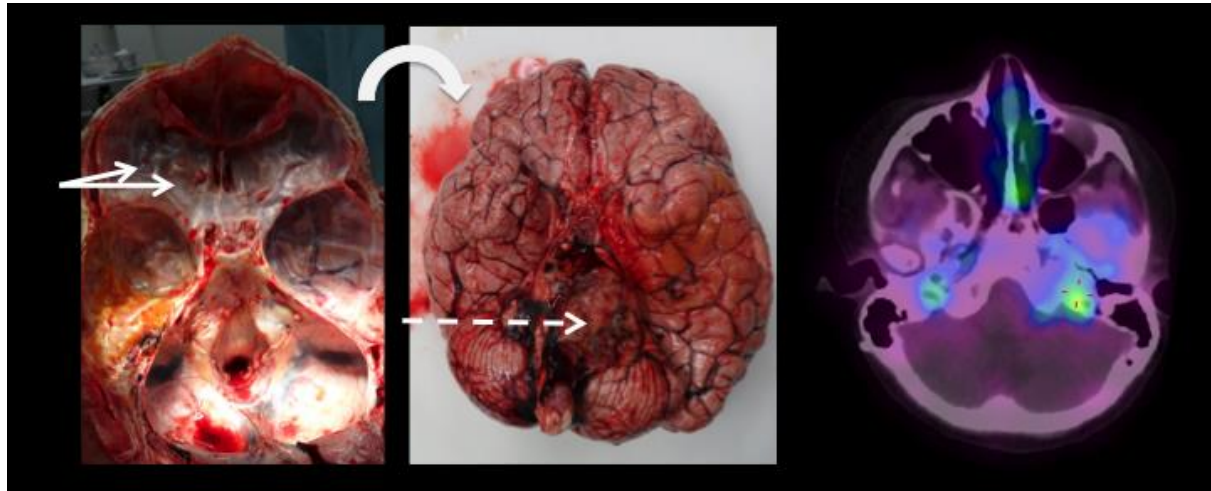


**Supplemental Figure 1.** Gadolinium-enhanced T1-MRI, PET, and macroscopy (if available) images of (A) the primary pontine tumor and metastases at the (B) cervicomedullary junction, (C) spinal cord, (D) posterior horn of the left lateral ventricle, (E) right frontal lobe, and (F) left Sylvian fissure. Arrows represent areas of  $^{89}\text{Zr}$ -bevacizumab uptake or disease.



**Supplemental Figure 2.** Macroscopic picture of the dural metastases (solid arrows), which were detected during autopsy but were undetected by MRI and PET. The dotted arrow indicates the primary pontine tumor.