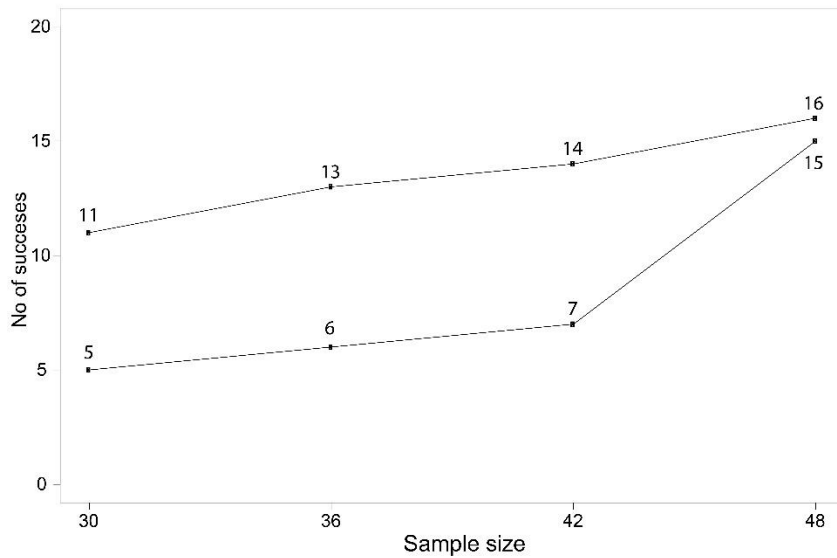


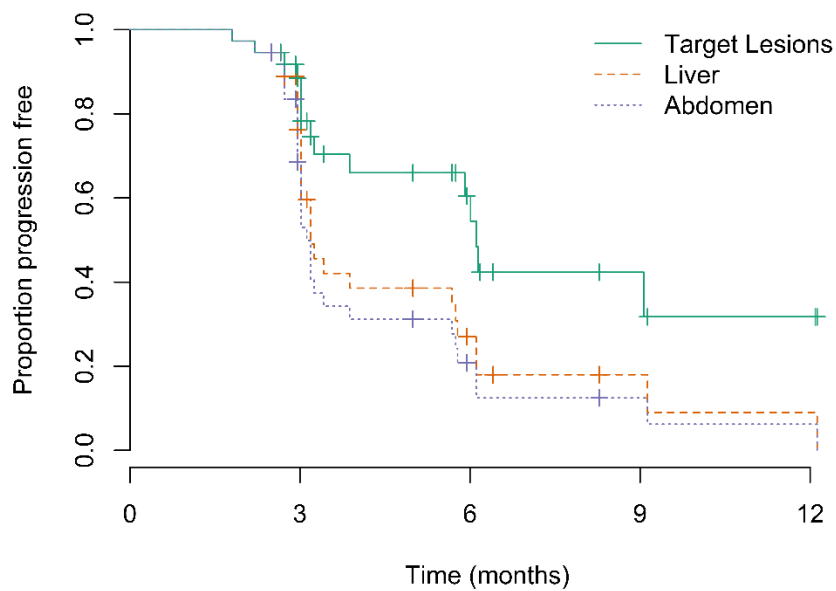
Supplemental Table 1 Quality of life							
Scale	Baseline (n=37)	1 week (27)	6 weeks (36)	3 months (36)	6 months (17)	9 months (8)	12 months (3)
QLQ-C30							
QoL	83 (67 - 83)	42 (25 - 71)	67 (56 - 83)	71 (58 - 83)	83 (67 - 92)	71 (54 - 88)	83 (58 - 92)
Physical Functioning	93 (87 - 100)	40 (20 - 83)	87 (67 - 93)	87 (67 - 100)	87 (73 - 93)	77 (63 - 95)	67 (57 - 83)
Role Functioning	100 (83 - 100)	33 (0 - 42)	67 (50 - 100)	67 (62 - 100)	83 (67 - 100)	83 (62 - 100)	100 (67 - 100)
Emotional Functioning	83 (75 - 92)	75 (54 - 96)	83 (67 - 100)	79 (67 - 92)	83 (67 - 92)	71 (62 - 83)	67 (67 - 79)
Cognitive Functioning	100 (83 - 100)	83 (67 - 100)	100 (83 - 100)	100 (83 - 100)	100 (67 - 100)	83 (75 - 100)	100 (83 - 100)
Social Functioning	100 (67 - 100)	50 (33 - 83)	83 (67 - 100)	83 (67 - 100)	100 (83 - 100)	100 (62 - 100)	100 (67 - 100)
Fatigue	11 (0 - 22)	67 (44 - 100)	33 (22 - 56)	22 (11 - 56)	22 (0 - 33)	22 (8 - 56)	22 (11 - 50)
Nausea and vomiting	0 (0 - 0)	33 (17 - 67)	0 (0 - 17)	0 (0 - 17)	0 (0 - 0)	0 (0 - 17)	0 (0 - 8)
Pain	0 (0 - 0)	67 (33 - 83)	8 (0 - 33)	17 (0 - 33)	0 (0 - 17)	8 (0 - 42)	0 (0 - 33)
Dyspnea	0 (0 - 33)	0 (0 - 33)	0 (0 - 33)	0 (0 - 33)	0 (0 - 67)	33 (0 - 33)	67 (33 - 67)
Insomnia	0 (0 - 33)	33 (0 - 67)	17 (0 - 33)	17 (0 - 33)	33 (0 - 33)	33 (25 - 42)	33 (17 - 33)
Appetite loss	0 (0 - 0)	33 (33 - 100)	0 (0 - 33)	0 (0 - 33)	0 (0 - 33)	0 (0 - 8)	0 (0 - 0)
Constipation	0 (0 - 0)	33 (0 - 67)	0 (0 - 0)	0 (0 - 0)	0 (0 - 0)	0 (0 - 0)	0 (0 - 0)
Diarrhea	0 (0 - 33)	0 (0 - 0)	0 (0 - 0)	0 (0 - 33)	0 (0 - 33)	17 (0 - 33)	0 (0 - 17)
Financial difficulties	0 (0 - 0)	0 (0 - 0)	0 (0 - 0)	0 (0 - 0)	0 (0 - 0)	0 (0 - 0)	0 (0 - 17)
QLQ-LMC21							
Eating	0 (0 - 17)	67 (38 - 83)	17 (0 - 33)	0 (0 - 33)	0 (0 - 33)	0 (0 - 17)	0 (0 - 8)
Fatigue	11 (0 - 33)	67 (44 - 94)	33 (19 - 44)	22 (6 - 39)	22 (11 - 33)	22 (11 - 53)	11 (6 - 44)
Pain	0 (0 - 11)	44 (22 - 67)	17 (0 - 33)	22 (0 - 33)	11 (0 - 33)	17 (11 - 39)	22 (11 - 22)
Emotional problems	25 (17 - 42)	42 (17 - 58)	29 (17 - 42)	25 (17 - 42)	33 (17 - 33)	21 (17 - 44)	17 (17 - 33)

Weight loss	0 (0 - 0)	0 (0 - 0)	0 (0 - 8)	0 (0 - 0)	0 (0 - 33)	0 (0 - 33)	0 (0 - 0)
Taste	0 (0 - 0)	0 (0 - 67)	0 (0 - 33)	0 (0 - 33)	0 (0 - 0)	0 (0 - 8)	0 (0 - 0)
Dry mouth	0 (0 - 33)	0 (0 - 50)	0 (0 - 33)	0 (0 - 33)	0 (0 - 33)	33 (0 - 67)	33 (17 - 33)
Sore mouth/tongue	0 (0 - 0)	0 (0 - 0)	0 (0 - 0)	0 (0 - 0)	0 (0 - 0)	0 (0 - 0)	0 (0 - 17)
Peripheral neuropathy	33 (0 - 33)	0 (0 - 33)	33 (0 - 67)	33 (0 - 33)	0 (0 - 33)	0 (0 - 33)	33 (17 - 33)
Jaundice	0 (0 - 0)	0 (0 - 0)	0 (0 - 0)	0 (0 - 0)	0 (0 - 0)	0 (0 - 0)	0 (0 - 0)
Contact with friends	0 (0 - 0)	33 (0 - 67)	0 (0 - 8)	0 (0 - 33)	0 (0 - 33)	0 (0 - 33)	0 (0 - 33)
Talking about feelings	0 (0 - 0)	0 (0 - 0)	0 (0 - 0)	0 (0 - 33)	0 (0 - 0)	17 (0 - 33)	0 (0 - 17)
Sex life	0 (0 - 33)	17 (0 - 67)	33 (0 - 33)	33 (0 - 33)	0 (0 - 33)	50 (8 - 67)	0 (0 - 33)

Median score (interquartile range). QLQ-C30: quality of life questionnaire – common 30, QLQ-LMC21: quality of life – colorectal liver metastases 21

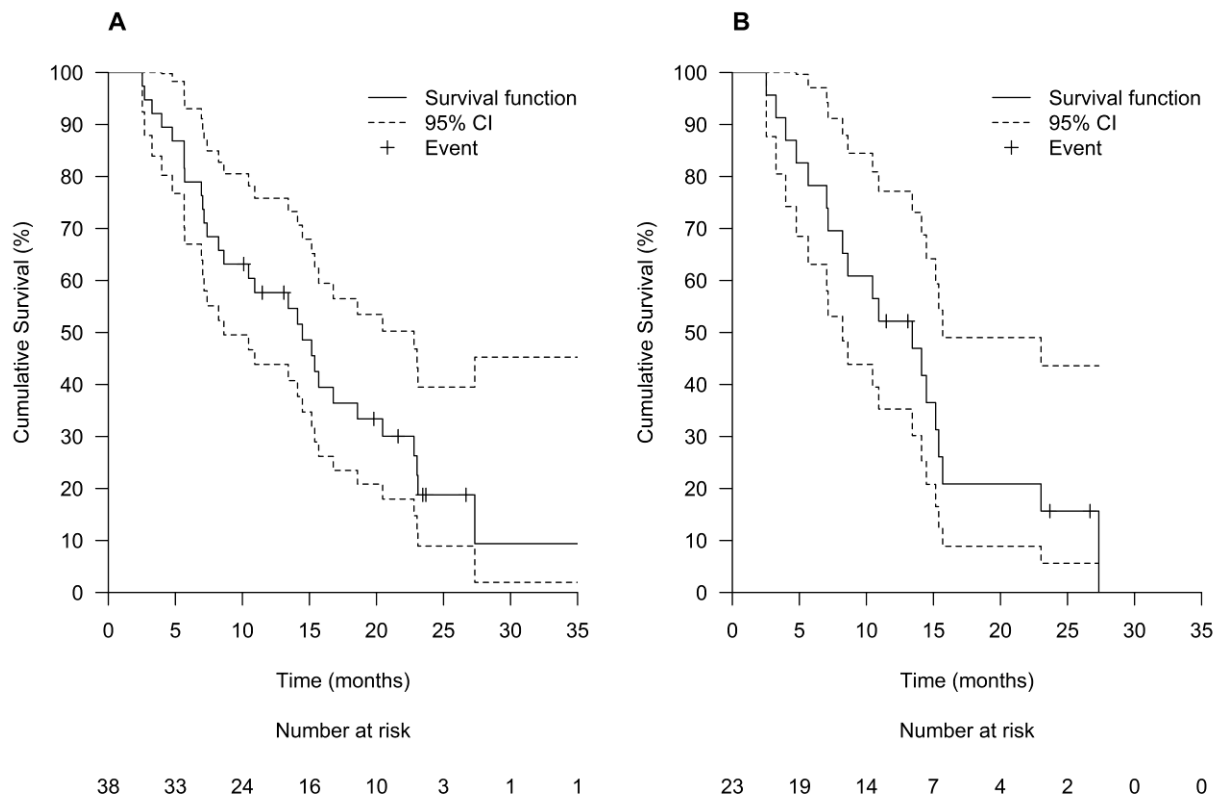


Supplemental Figure 1. Stopping boundaries for futility and efficacy based on an exact sequential study design that aimed for a type I error $\leq 5\%$. The exact power of this design was 90%. Efficacy was seen at first interim analysis, when 24 out of 30 patients showed a response.



		Number at risk			
		0	3	6	9
Target Lesions	37	26	10	4	2
Liver	37	23	6	2	1
Abdomen	37	22	5	2	1

Supplemental Figure 2. Kaplan-Meier estimate of median time to progression was 6 mo (95% CI, 6 mo - ∞) for target lesions, 3 mo (95% CI, 3 – 6 mo) for liver specific and 3 mo (95% CI, 3 – 6 mo) for whole body.



Supplemental Figure 3. *Kaplan-Meier estimate of median overall survival was 14.5 months (95% CI, 8.6 to 22.8 months) for all patients (A) and 13.4 months (95% CI, 8.2 – 15.7 months) for colorectal cancer patients (B)*