

Supplemental Figure 1. Transverse slice of  $^{99m}\text{Tc}$ -trofolastat SPECT/CT at the level of the prostate gland with representative circular ROIs over the lesion and within the obturator muscle.

Supplemental Table 1. Visual scoring scale

<b>Score</b>	<b>Description</b>	<b>TBR</b>
0	Equal to Background Activity/ No Contrast/No Lesions Observed	$\leq 6$
1	Slightly Above Background/Poor Contrast	$> 6$ and $\leq 8$
2	Above Background/Good Contrast	$> 8$ and $\leq 10$
3	Above Background/Excellent Contrast	$> 10$ and $\leq 15$
4	Greater than all other activity/Excellent Contrast	$> 15$

TBR tumor-to-background ratio

Supplemental Table 2. Categorical mean uptake and visual scores

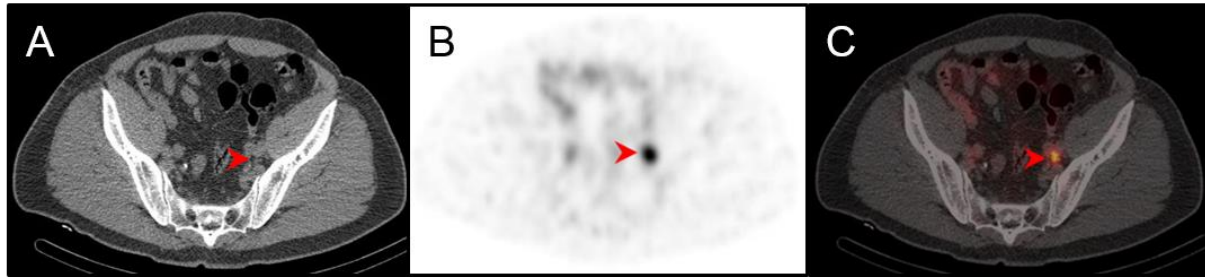
	N	TBR		Visual scores			
		Mean	SD	Overall Median	Reader 1 Median	Reader 2 Median	Reader 3 Median
SPECT scans*	103						
Treated	26	16.2	11.2	3.0	2.0	3.0	4.0
Untreated	77	37.7	35.6	4.0	3.0	4.0	4.0
Prostate Lobes*	206						
Treated	56	15.4	11.4	2.0	0.0	1.0	3.0
Untreated	150	28.1	30.6	3.0	2.0	1.0	4.0
Normal Lobes	24	13.5	15.2	0.0	0.0	0.0	2.5
Abnormal Lobes†	182	26.1	28.2	3.0	2.0	2.0	4.0
GS 6	12	12.3	8.3	0.5	0.0	0.5	3.0
GS 7	71	22.0	25.6	3.0	2.0	1.0	4.0
GS 8-10	60	41.3	34.6	4.0	3.0	4.0	4.0
GS ≤3+3	36	13.1	13.2	1.0	0.0	0.0	3.0
GS ≥3+4	131	30.8	31.4	4.0	3.0	3.0	4.0
Lymph node involvement††							
Yes	33	40.9	36.1	4.0	3.0	4.0	4.0
No	69	28.5	30.5	3.0	3.0	3.0	4.0

\* 2 Patients had non-evaluable or missing SPECT/CT scans and/or pathology results (600-001, 801-001)

† 39 Prostate lobes were unevaluable for Gleason grade but noted as having histopathology consistent with PCa

†† 3 Patients had non-evaluable or missing lymph node pathology and/or missing or unevaluable SPECT/CT scans (101-002, 105-002, 600-001)

TBR target-to-background ratio, SD standard deviation, GS Gleason score



Supplemental Figure 2. Example of fused axial  $^{99m}\text{Tc}$ -trofolostat SPECT/CT (C) with corresponding CT (A) and SPECT (B) slices showing a positive small lymph node in the left obturator fossa. Red arrow heads indicate location of histologically confirmed metastatic lymph node.