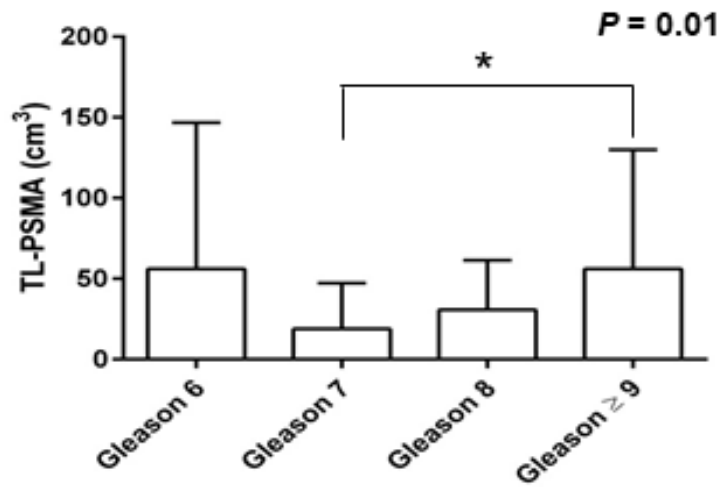
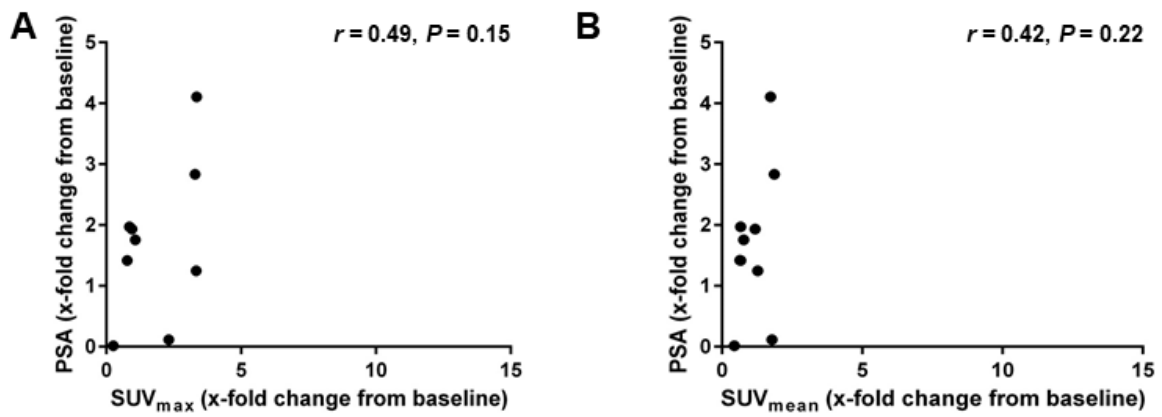


**Supplemental Figure 1** Volumetric assessment of whole-body tumor burden using  $^{68}\text{Ga}$ -PSMA I&T PET. PSMA-TV is not significantly different between patients with different initial Gleason scores ( $P = 0.32$ ).



**Supplemental Figure 2** Volumetric assessment of whole-body tumor burden using  $^{68}\text{Ga}$ -PSMA I&T PET. TL-PSMA is significantly different in patients with different initial Gleason scores ( $P = 0.01$ ).



**Supplemental Figure 3** Graphical illustration of the results of the correlation analysis between changes of  $^{68}\text{Ga}$ -PSMA I&T PET parameters and changes in PSA levels. Relative change in PSA level over time is not significantly correlated with relative change of SUV<sub>max</sub> (**A**,  $P = 0.15$ ) or SUV<sub>mean</sub> (**B**,  $P = 0.22$ ).