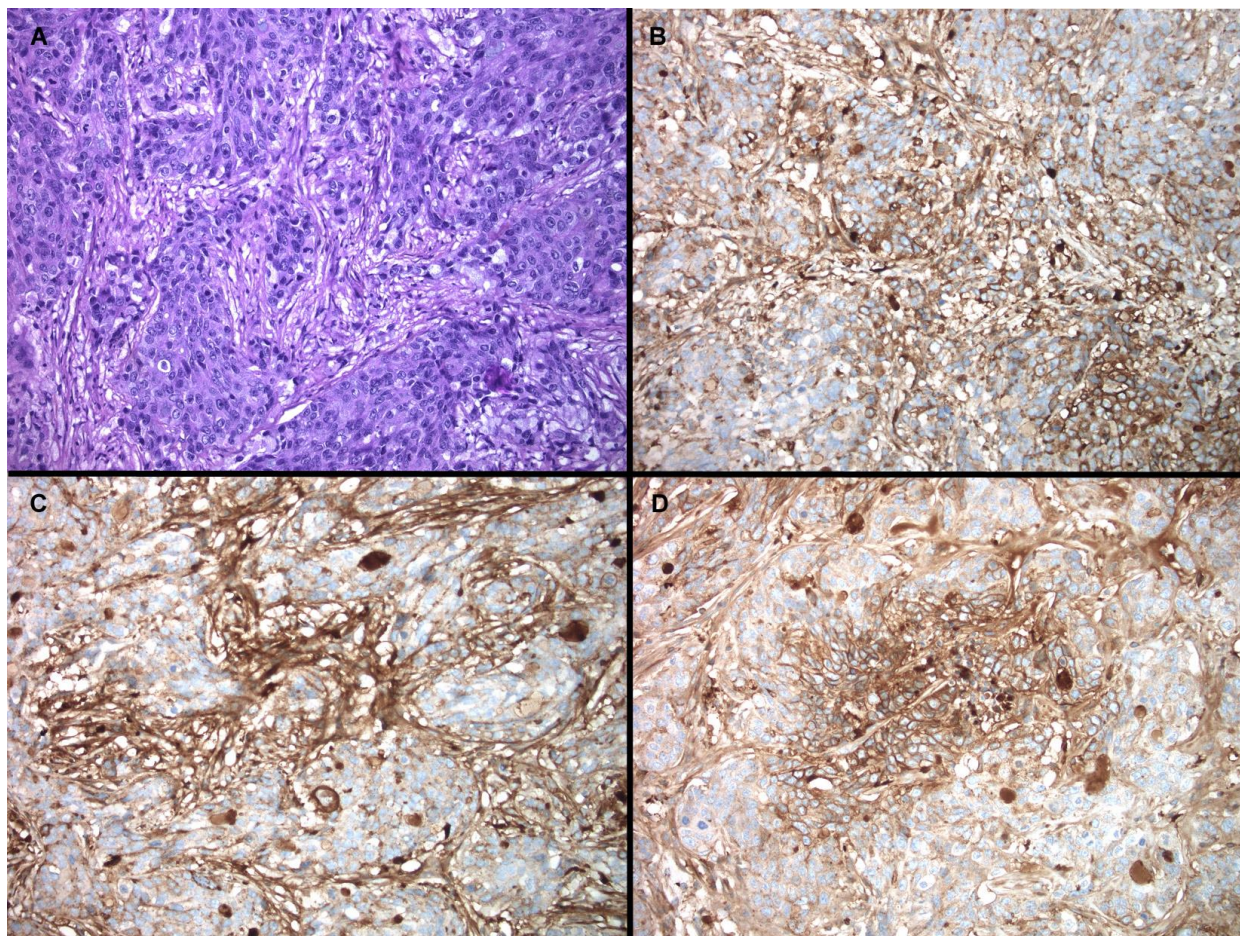


**Supplemental Figure 1. GLUT1 expression in HUVEC cells.**

GLUT1 immunohistochemistry was performed on HUVEC in the 3 study groups. A: succinate, B: fumarate, C: PBS. No difference was observed between study groups, with 20% of cells being positive (with low to moderate staining) (400× magnification).



**Supplemental Figure 2. GLUT1 expression in tumor xenografts.**

GLUT1 immunohistochemistry was performed on HUVEC in the 3 study groups. A: HPS (hematoxylin phloxine saffron) coloration (HT29 xenografts are moderately differentiated adenocarcinomas that contain a stromal compartment), B: succinate, C: fumarate, D: PBS. No difference was observed between study groups, with 20%–30% of epithelial cells being positive (with low to moderate expression profile) and up to 100% of stromal cells being positive (with high expression profile) (200× magnification).