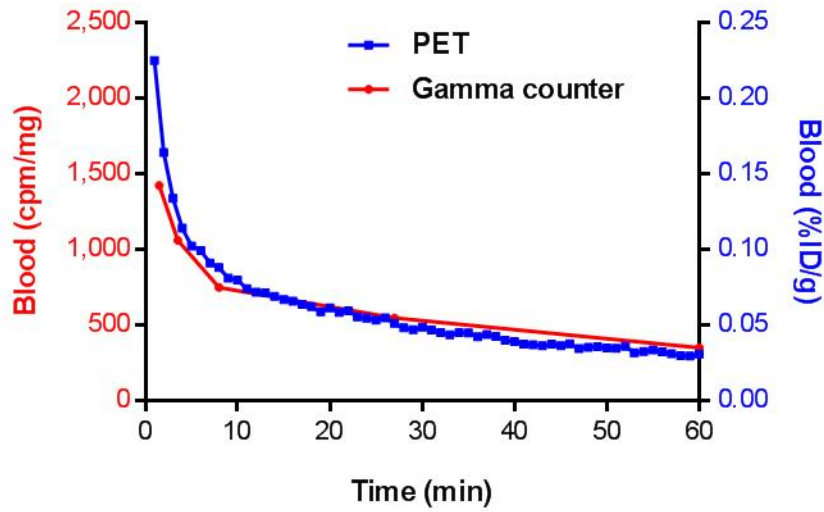
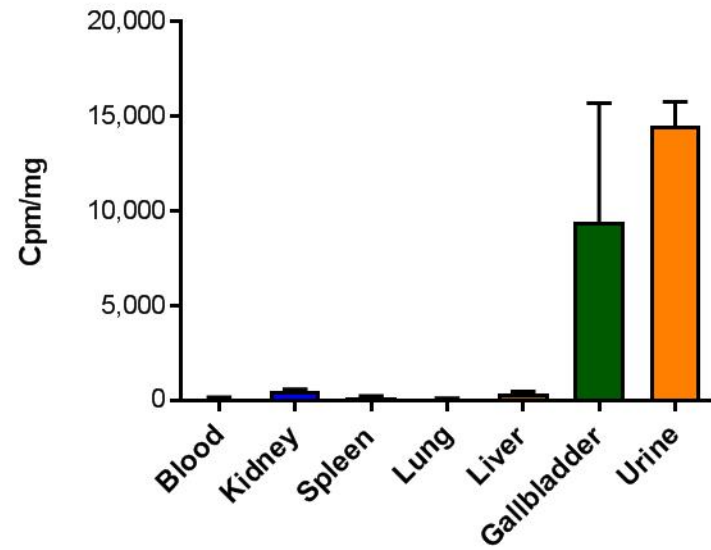
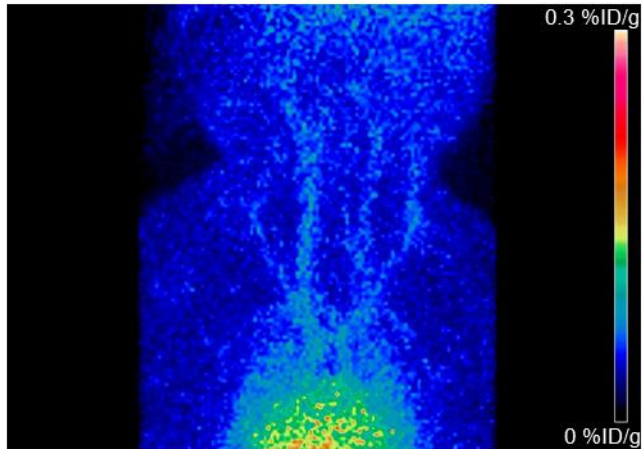
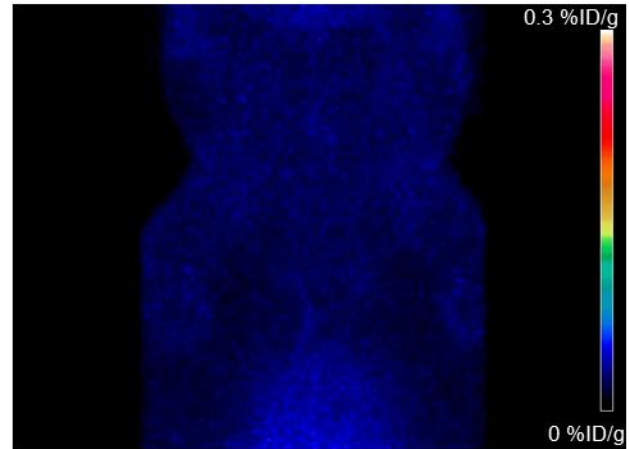


SUPPLEMENTAL FIGURE 1. Investigation of human platelet rich plasma aggregation after adenosine diphosphate stimulus during incubation with ¹⁹F-GP1 and tirofiban.

A**B****C****D**

SUPPLEMENTAL FIGURE 2. Biodistribution and pharmacokinetic analyses of ^{18}F -GP1 in cynomolgus monkeys. (A) Activity measured in blood samples and by PET are in good agreement. (B) *Ex vivo* organ distribution in cynomolgus monkeys. Only low amounts of radioactivity was measured in blood, kidney, spleen, lung and liver at this time point. The high amounts of radioactivity measured in urine and gallbladder indicate a rapid renal and partial hepatobiliary clearance. (C) MIP images of the thorax and heart region from 0-5min and (D) 40-60min post injection showing rapid clearance and low tissue background of ^{18}F -GP1.