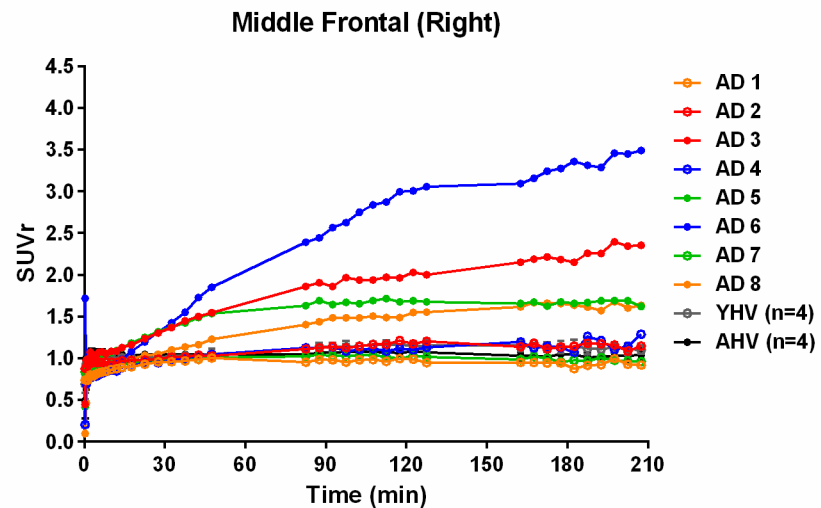
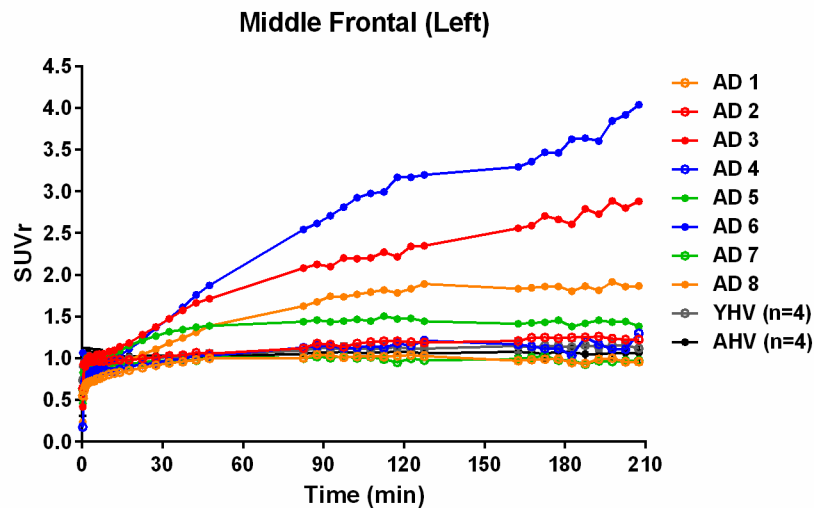
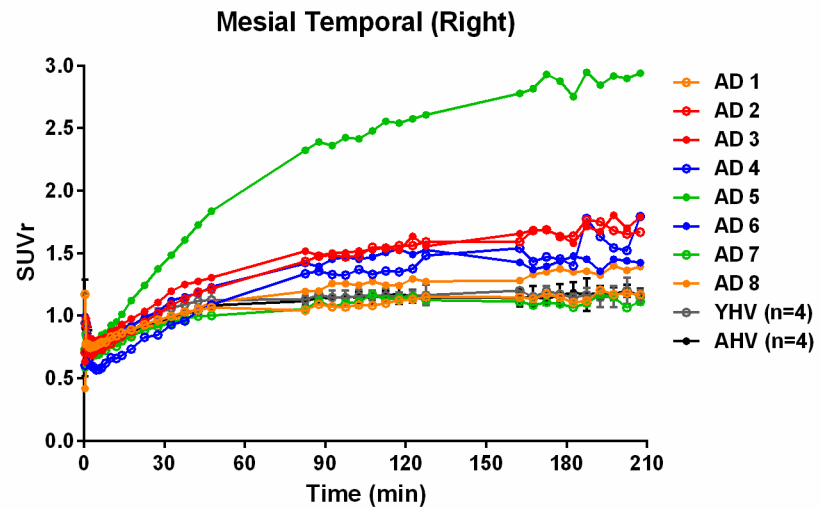
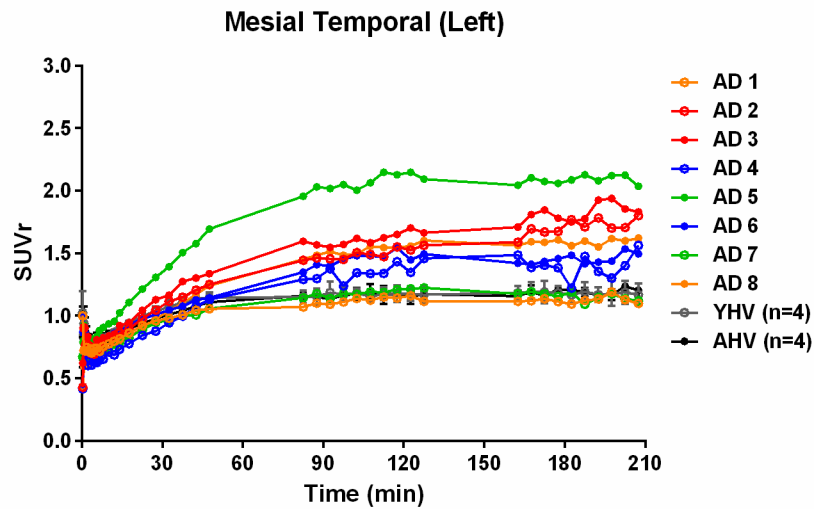


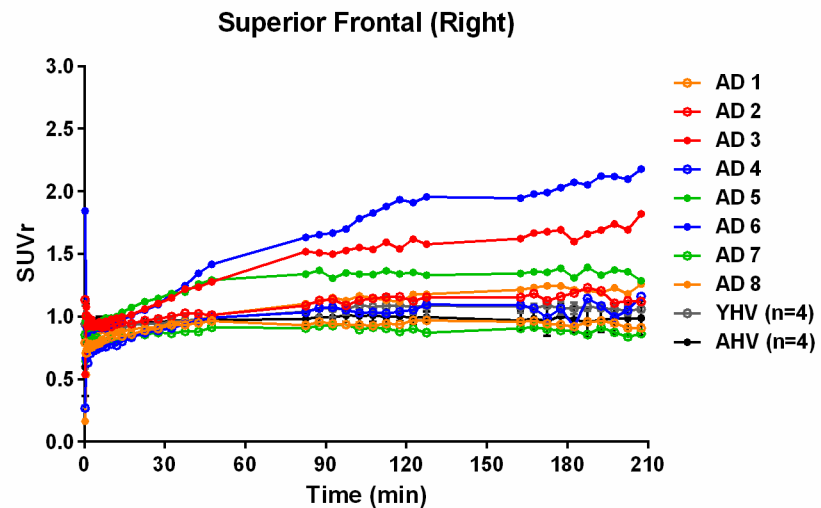
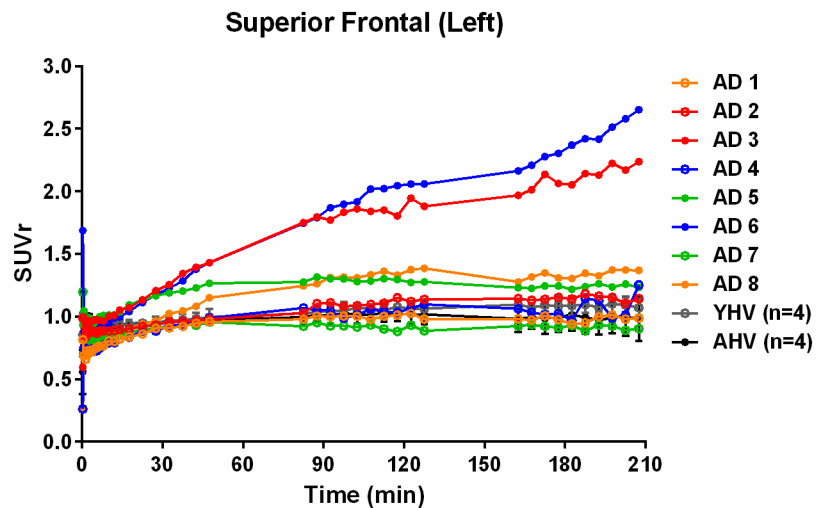
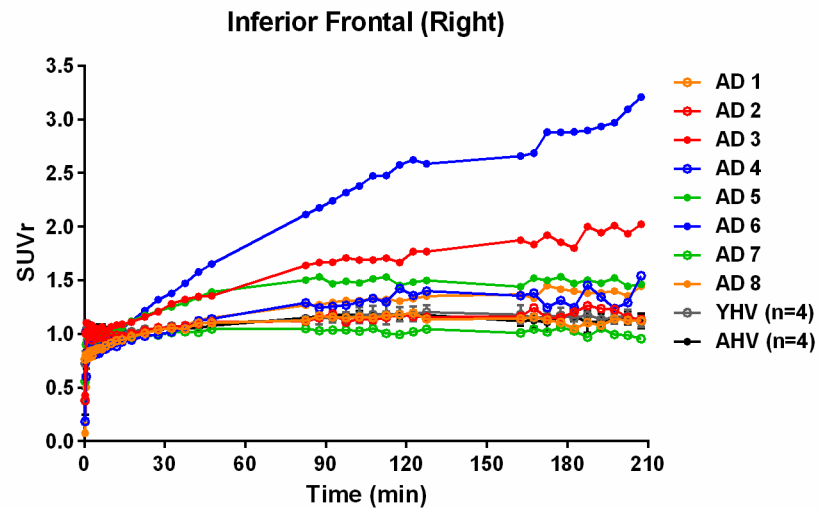
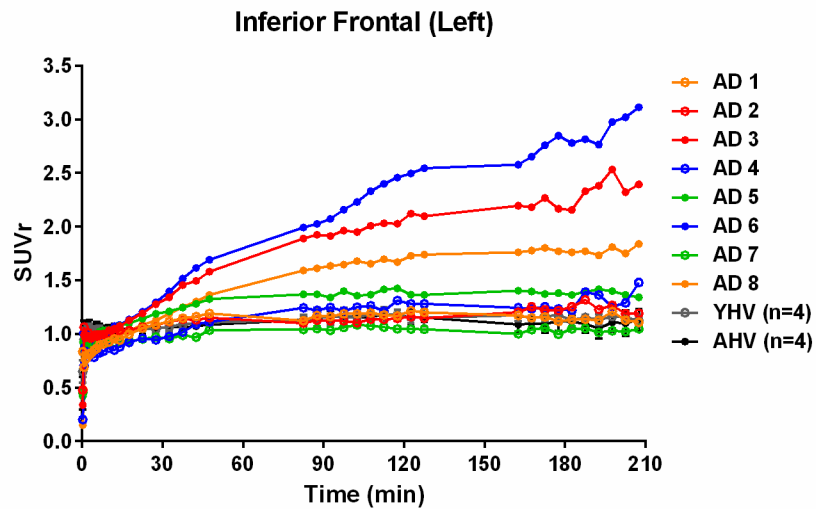
SUPPLEMENTAL FIGURE 1: ^{18}F -AV-1451 SUVR curves in the superior and inferior lateral temporal cortex. Individual curves for the AD subjects and

average curves (mean \pm SD) for the healthy volunteers are reported. AD = Alzheimer's Disease subject; YHV = Young Healthy Volunteer; AHV = Aged Healthy Volunteer.

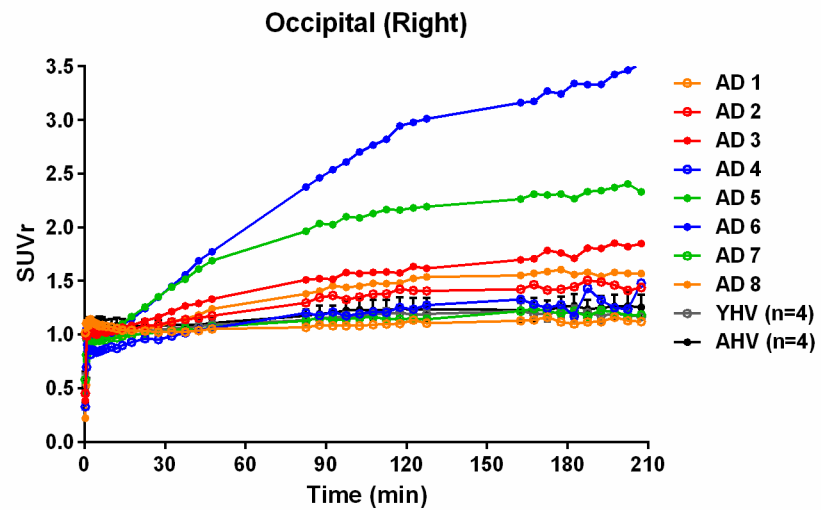
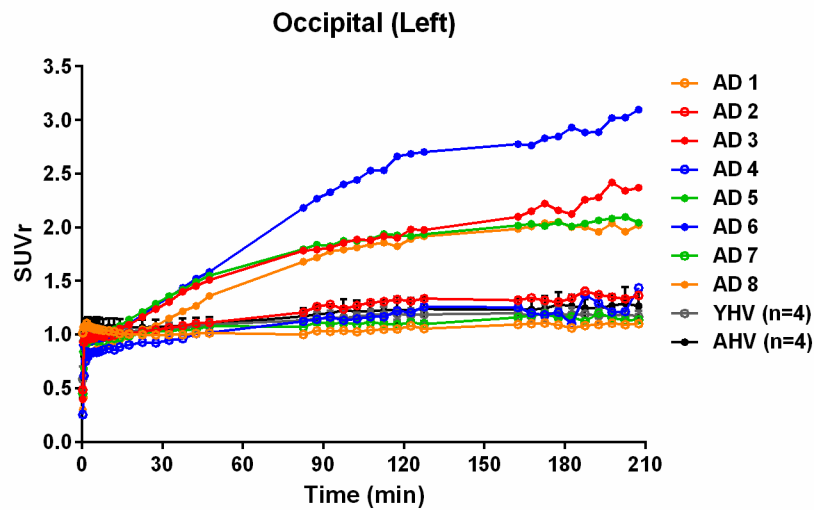
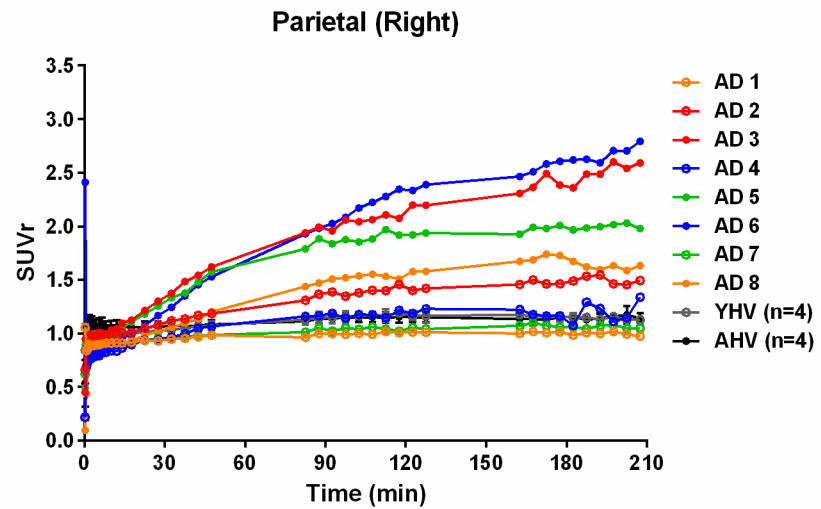
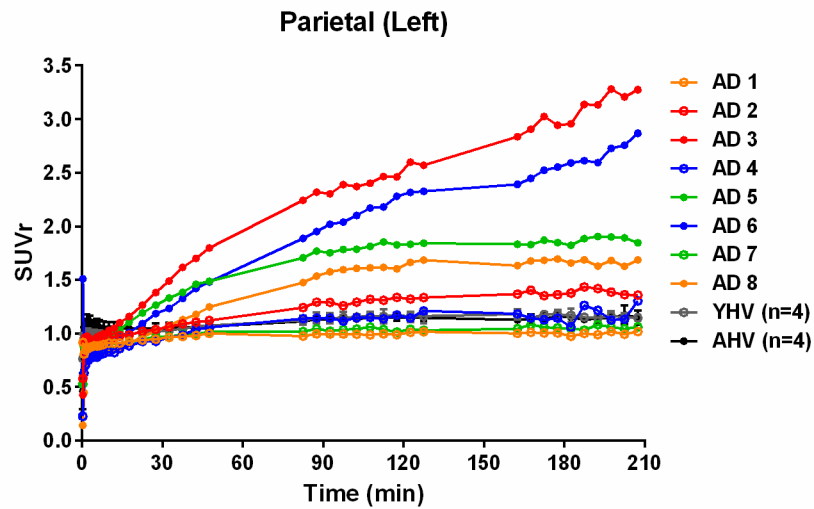


SUPPLEMENTAL FIGURE 2: ^{18}F -AV-1451 SUVr curves in the mesial temporal cortex and the middle frontal cortex. Individual curves for the AD

subjects and average curves (mean \pm SD) for the healthy volunteers are reported. AD = Alzheimer's Disease subject; YHV = Young Healthy Volunteer; AHV = Aged Healthy Volunteer.

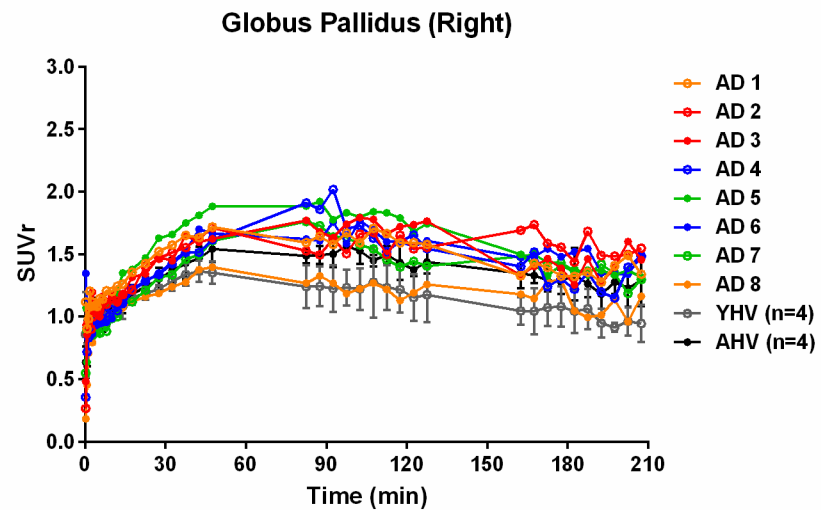
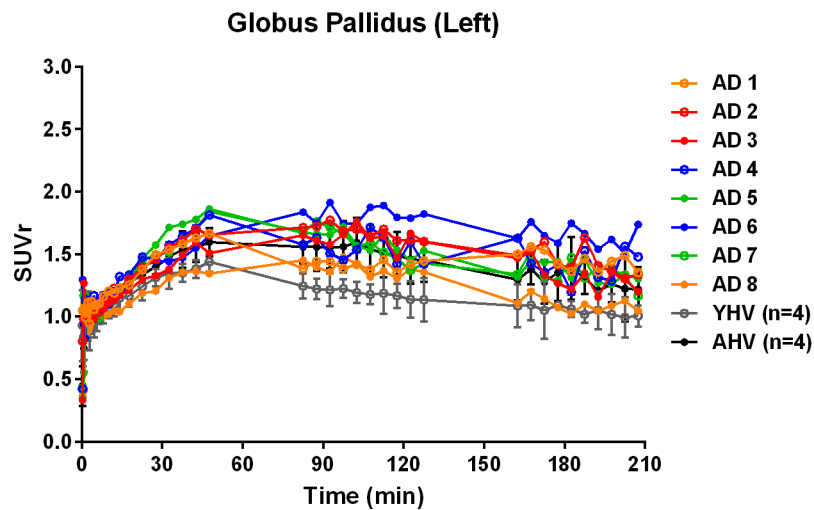
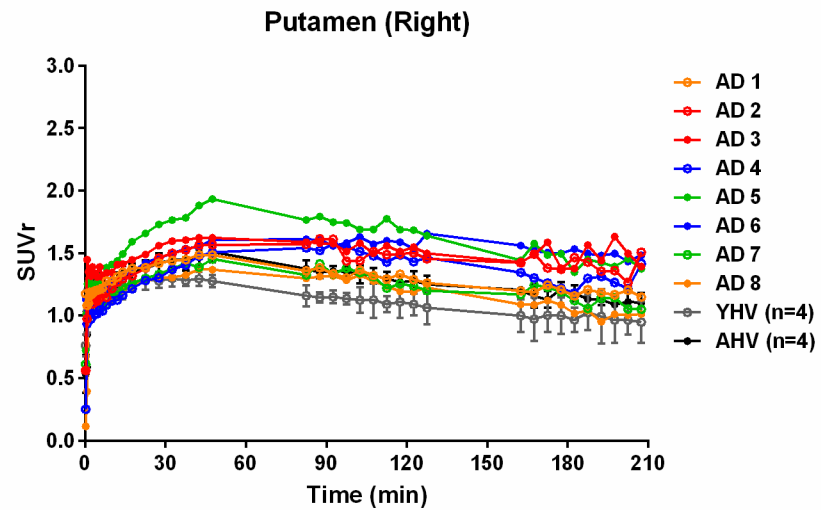
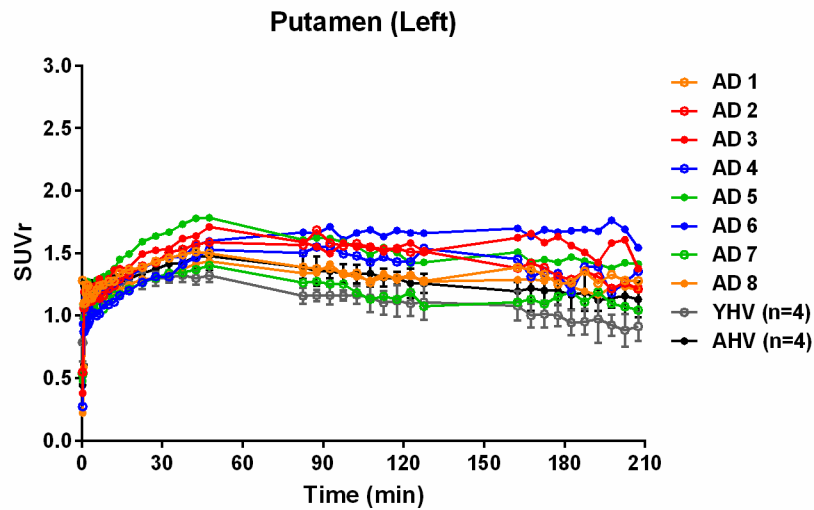


SUPPLEMENTAL FIGURE 3: ^{18}F -AV-1451 SUVR curves in the inferior and superior frontal cortex. Individual curves for the AD subjects and average curves (mean \pm SD) for the healthy volunteers are reported. AD = Alzheimer's Disease subject; YHV = Young Healthy Volunteer; AHV = Aged Healthy Volunteer.

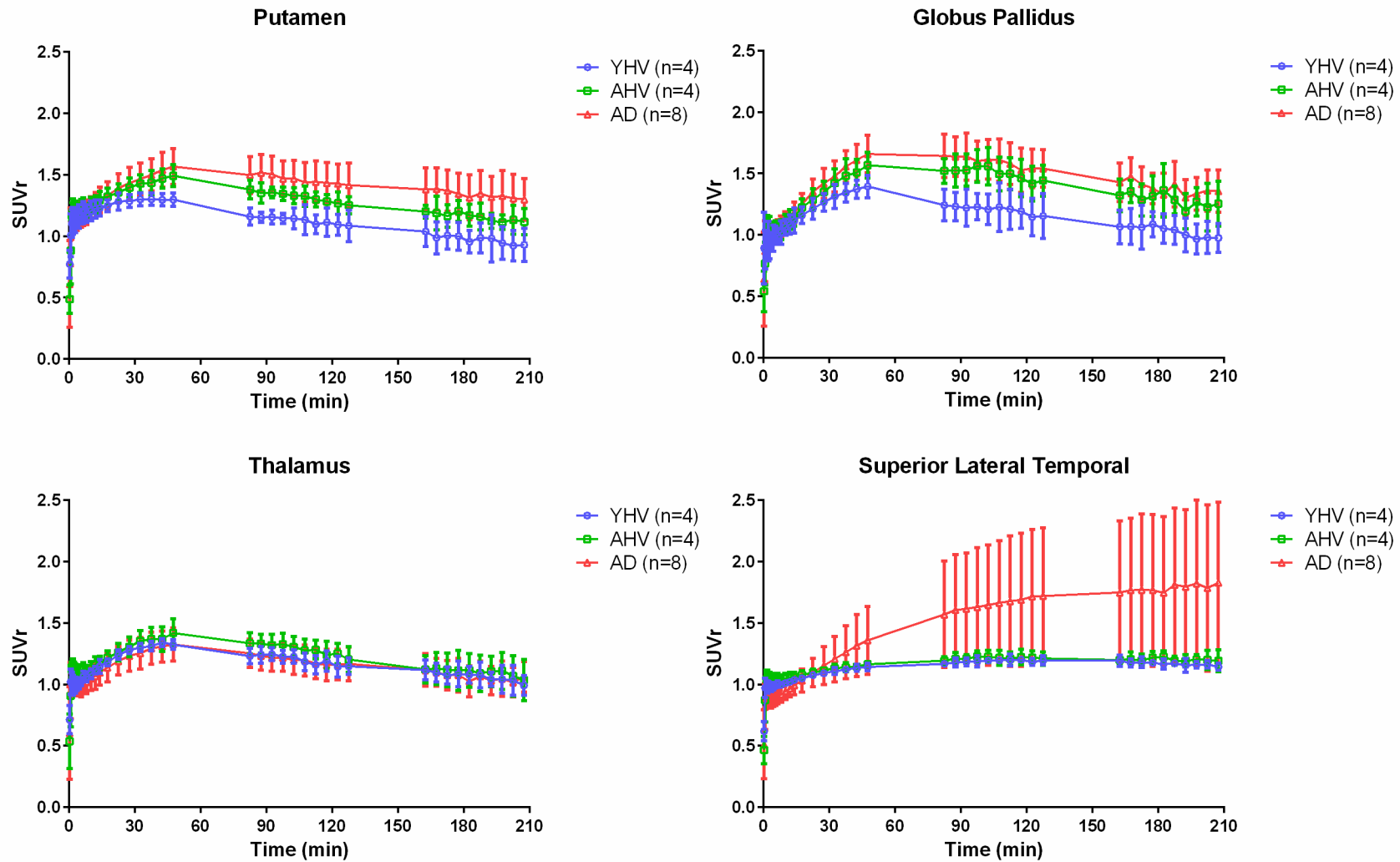


SUPPLEMENTAL FIGURE 4: ^{18}F -AV-1451 SUVR curves in the parietal cortex and the occipital cortex. Individual curves for the AD subjects and

average curves (mean \pm SD) for the healthy volunteers are reported. AD = Alzheimer's Disease subject; YHV = Young Healthy Volunteer; AHV = Aged Healthy Volunteer.



SUPPLEMENTAL FIGURE 5: ^{18}F -AV-1451 SUVr curves in the putamen and the globus pallidus. Individual curves for the AD subjects and average curves (mean \pm SD) for the healthy volunteers are reported. AD = Alzheimer's Disease subject; YHV = Young Healthy Volunteer; AHV = Aged Healthy Volunteer.



SUPPLEMENTAL FIGURE 6: Average (mean \pm SD) ^{18}F -AV-1451 SUVR curves in the putamen, globus pallidus, thalamus and superior lateral temporal cortex for the AD subjects and the healthy volunteers. AD = Alzheimer's Disease subject; YHV = Young Healthy Volunteer; AHV = Aged Healthy Volunteer.

SUPPLEMENTAL TABLE 1. Regional values of BP_{ND} (2T, LGA and NI-LGA; 130 min of scanning data) and SUVR estimates.

	Group	Frontal	Parietal	Occipital	Lateral Temporal	Mesial Temporal	Putamen
2T	YHV	0.08±0.07	0.11±0.04	0.13±0.04	0.14±0.04	0.08±0.04	0.17±0.09
	AHV	0.06±0.07	0.12±0.04	0.21±0.12	0.19±0.07	0.08±0.09	0.31±0.07
	AD	0.37±0.48	0.47±0.46	0.54±0.55	0.62±0.53	0.35±0.36	0.41±0.13
LGA	YHV	0.08±0.06	0.11±0.04	0.14±0.04	0.15±0.03	0.08±0.03	0.16±0.08
	AHV	0.06±0.06	0.12±0.04	0.18±0.08	0.17±0.04	0.06±0.04	0.30±0.07
	AD	0.36±0.48	0.45±0.46	0.51±0.50	0.55±0.46	0.32±0.33	0.38±0.13
NI-LGA	YHV	0.07±0.06	0.10±0.03	0.13±0.04	0.14±0.03	0.08±0.03	0.18±0.06
	AHV	0.05±0.06	0.11±0.03	0.16±0.07	0.16±0.04	0.05±0.04	0.33±0.07
	AD	0.31±0.42	0.40±0.42	0.45±0.43	0.50±0.42	0.29±0.30	0.40±0.12
SUVR-1 80-100	YHV	0.10±0.06	0.14±0.05	0.15±0.05	0.18±0.04	0.16±0.05	0.15±0.05
	AHV	0.08±0.07	0.13±0.03	0.20±0.07	0.21±0.05	0.15±0.03	0.36±0.06
	AD	0.39±0.42	0.49±0.43	0.52±0.46	0.63±0.46	0.43±0.34	0.50±0.14
SUVR-1 110-130	YHV	0.13±0.07	0.17±0.05	0.19±0.05	0.20±0.04	0.17±0.05	0.10±0.09
	AHV	0.08±0.08	0.15±0.04	0.23±0.10	0.23±0.06	0.16±0.05	0.28±0.07
	AD	0.47±0.54	0.59±0.52	0.64±0.57	0.73±0.54	0.51±0.38	0.43±0.17
SUVR-1 160-180	YHV	0.13±0.06	0.17±0.03	0.20±0.06	0.19±0.04	0.18±0.05	0.01±0.12
	AHV	0.05±0.09	0.14±0.03	0.24±0.10	0.24±0.06	0.16±0.05	0.19±0.08
	AD	0.51±0.62	0.68±0.62	0.73±0.64	0.79±0.61	0.55±0.44	0.37±0.17

Values presented as mean±SD.

Average of left and right regions; Frontal = average of inferior, superior and middle; Lateral Temporal = average of superior and inferior.

YHV = Young Healthy Volunteer; AHV = Aged Healthy Volunteer; AD = Alzheimer's Disease subject.