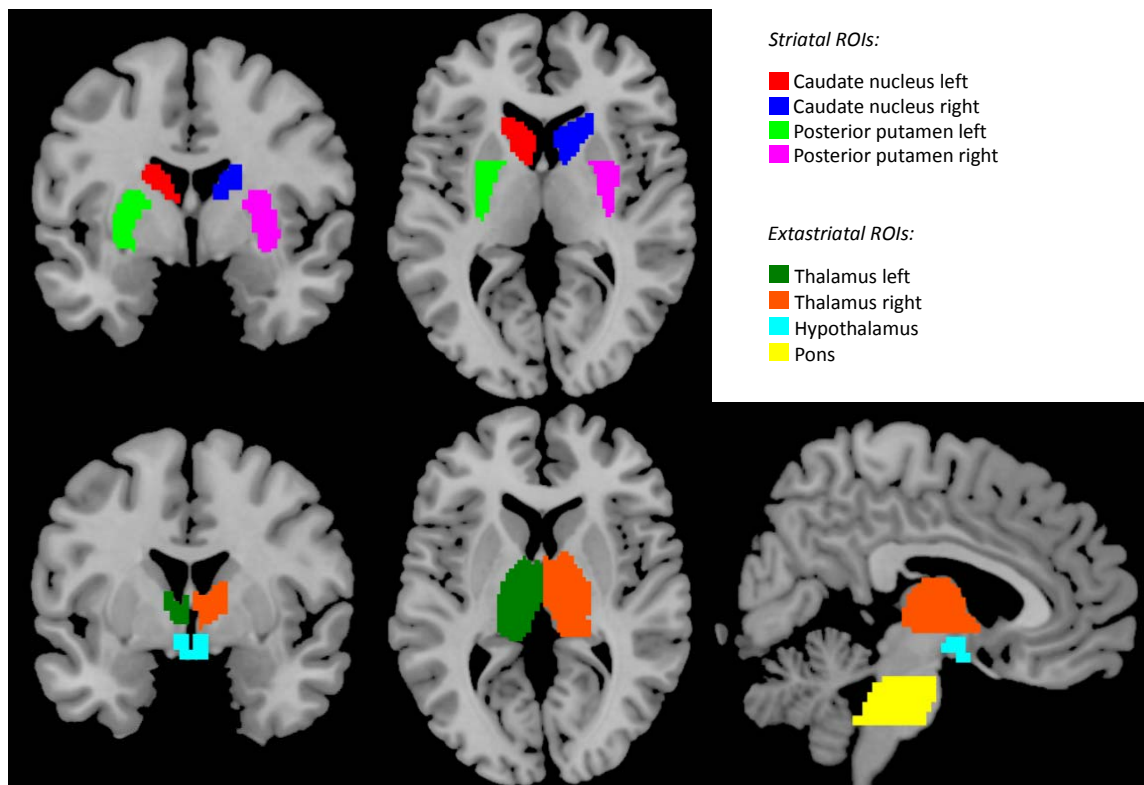


Supplement with

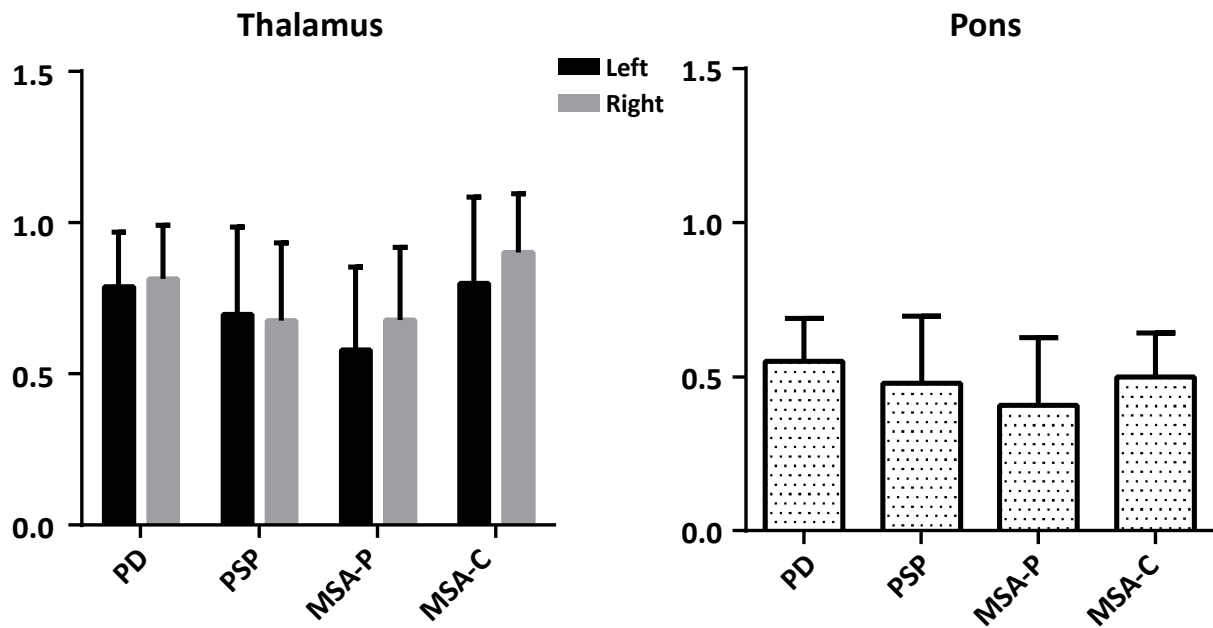
## *Analysis of extrastriatal $^{123}\text{I}$ -FP-CIT binding contributes to the differential diagnosis of parkinsonian diseases*

Joling et al.: VUmc, Department of Neurology, P.O. box 7057, 1007 MB Amsterdam, The Netherlands

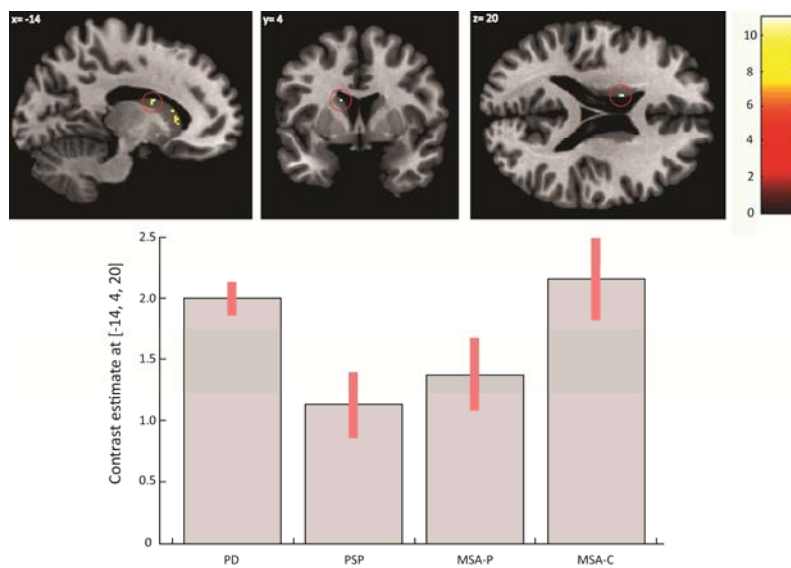
E: [me.joling@vumc.nl](mailto:me.joling@vumc.nl), T: +31(0)20-4440708, F: +31(0)20-4442800



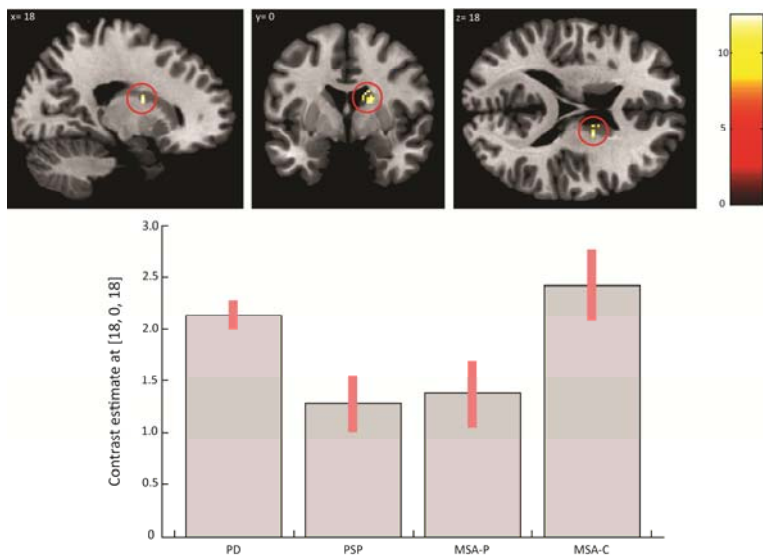
**Supplemental Figure 1:** Regions of interest (ROIs) used in the analysis. Top panel: striatal ROIs. Lower panel: extrastriatal ROIs.



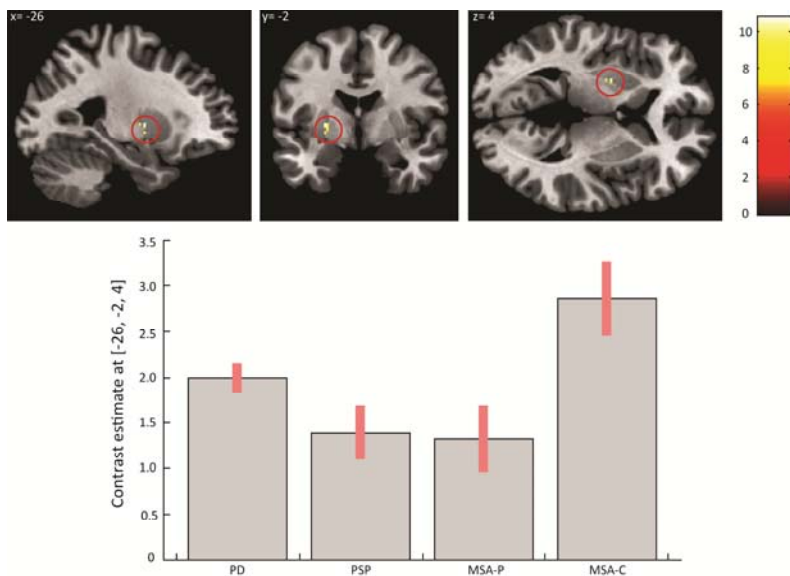
**Supplemental Figure 2:** Extrastriatal binding ratios per region of interest, without patients using SSRIs.



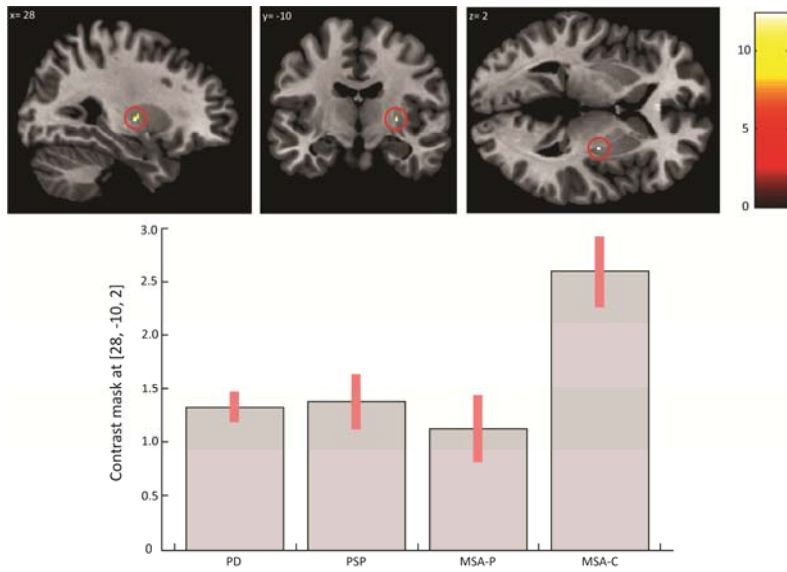
**Supplemental Figure 3:** Voxel-by-voxel analysis of caudate nucleus left at (x,y,z) -14,4,20. Lower panel shows quantification per diagnosis.



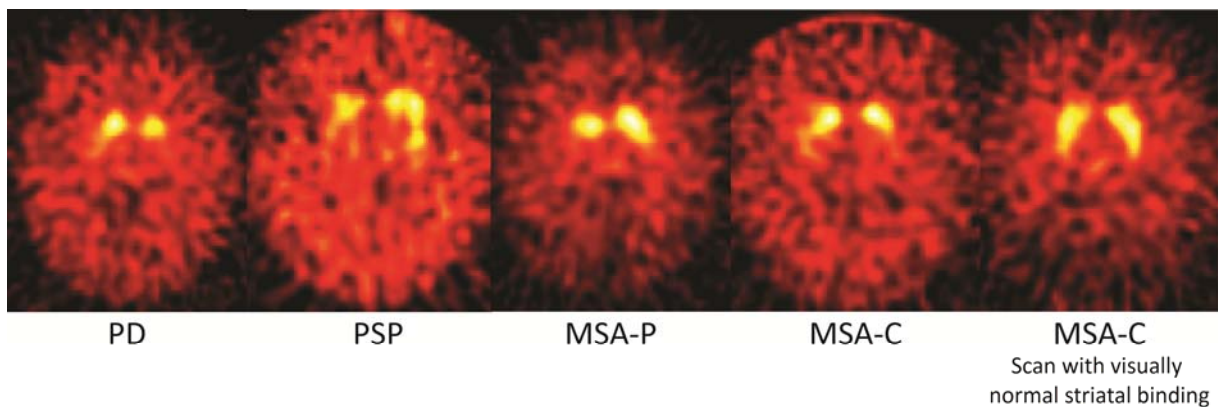
**Supplemental Figure 4:** Voxel-by-voxel analysis of caudate nucleus right at (x,y,z) 18,0,18. Lower panel shows quantification per diagnosis.



**Supplemental Figure 5:** Voxel-by-voxel analysis of posterior putamen left at (x,y,z) -26,-2,4. Lower panel shows quantification per diagnosis.



**Supplemental Figure 6:** Voxel-by-voxel analysis of posterior putamen right at (x,y,z) 28,-10,2. Lower panel shows quantification per diagnosis.



**Supplemental Figure 7:** Array of  $^{123}\text{I}$ -FP-CIT SPECT scans of different patients.