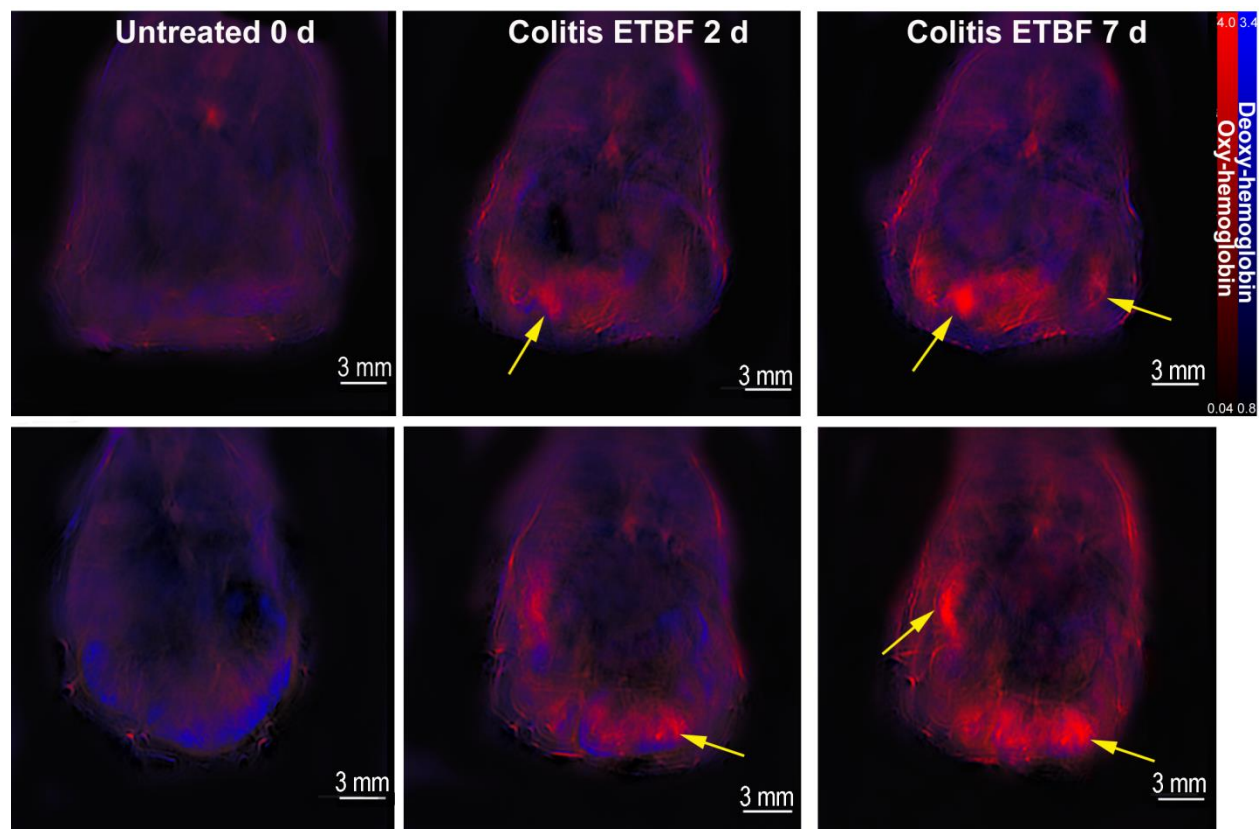


Supplemental Figure 1: Experimental Schematic



Supplemental Figure 2: MSOT detects increasing severity of colitis via increasing oxyhemoglobin.

Mice were imaged prior to ETBF treatment, 2 d post ETBF, and 7 d post ETBF treatment using MSOT. The images represent the additional 2 mice that were imaged longitudinally for 7 days are represented in the Top row and Bottom row. The third mouse images are located in Figure 1.