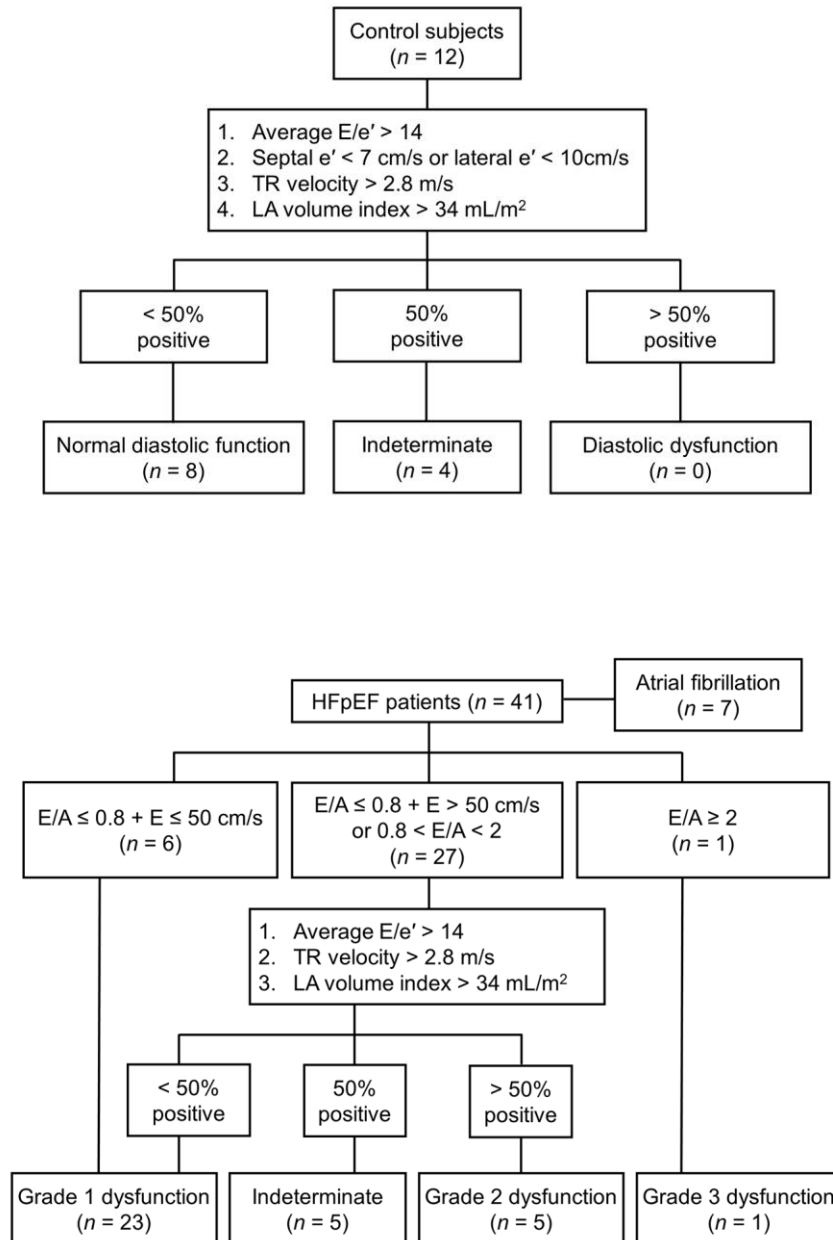
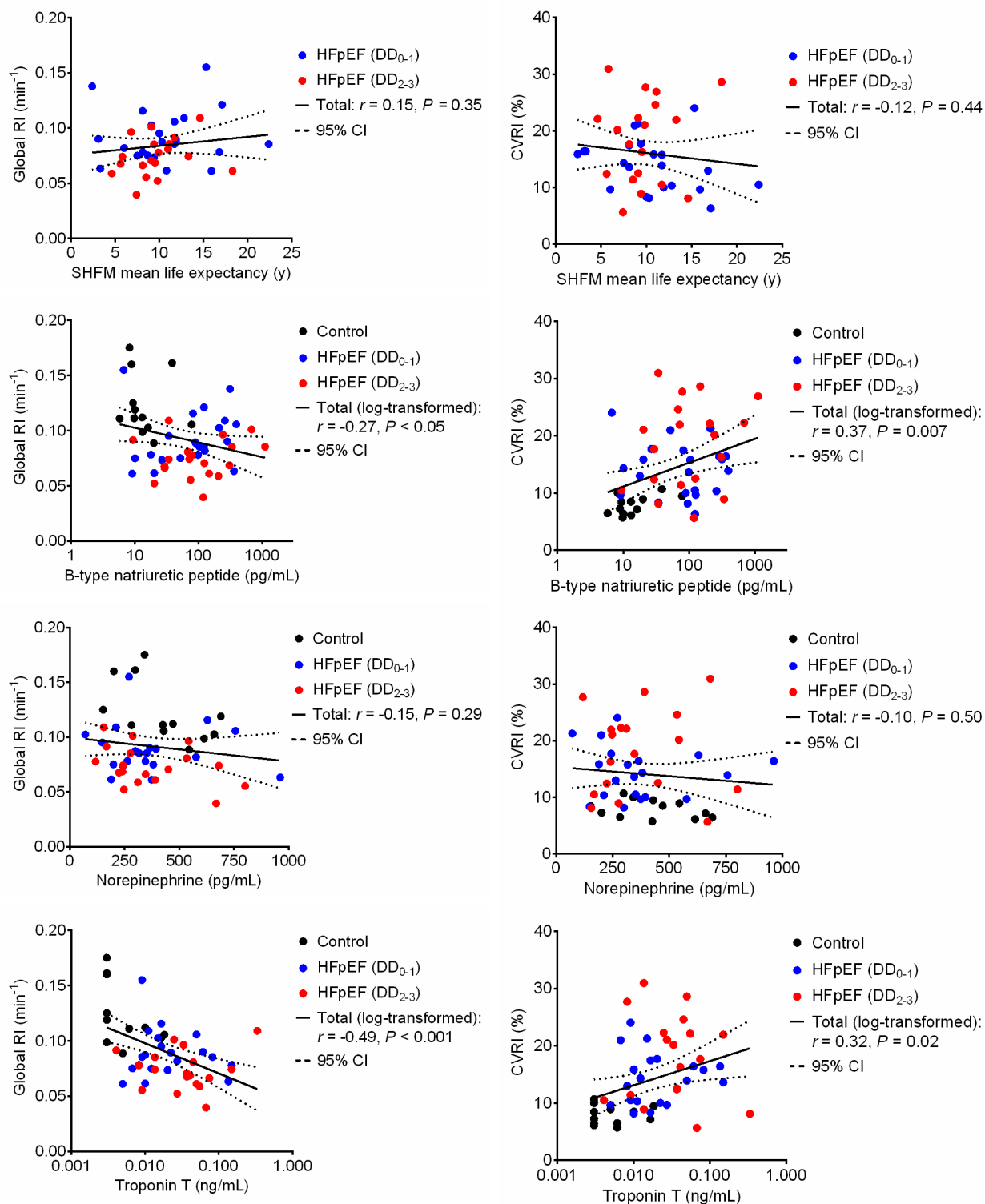


Supplemental Data



Supplemental Figure 1. Results of applying the new algorithm for diastolic function assessment in control subjects (A) and HFpEF patients (B). TR = tricuspid regurgitation, LA = left atrial.



Supplemental Figure 2. Scatter plots demonstrate the association of the SHFM-based mean life expectancy (A, B), the levels of B-type natriuretic peptide (C, D), norepinephrine (E, F), and troponin T (G, H) with global RI and CVRI in the study subjects. CI = confidence interval.