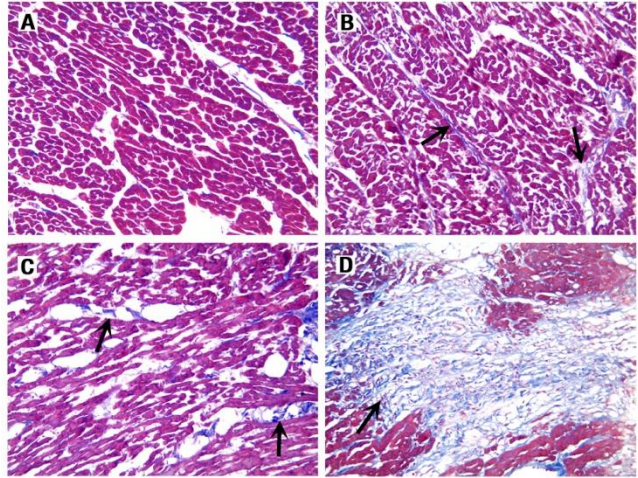


Supplemental Table 1

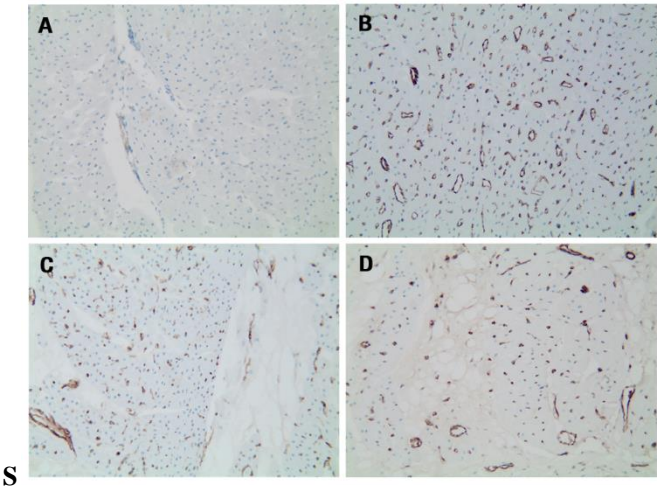
Segmental changes of WM in polar map

Segment	Pre-rad	3 mo post-rad	<i>p</i>	Pre-rad	6 mo post-rad	<i>p</i>	Pre-rad	12 mo post-rad	<i>p</i>
A									
basal	5.9 ± 0.3	5.6 ± 0.4	0.150	5.5 ± 0.4	5.1 ± 0.3	0.082	5.2 ± 0.3	4.7 ± 0.6	0.087
middle	5.5 ± 0.5	5.2 ± 0.7	0.474	5.3 ± 0.3	4.9 ± 0.4	0.082	5.3 ± 0.3	3.9 ± 0.8	0.003
apical	5.8 ± 0.4	5.3 ± 0.6	0.125	5.6 ± 0.5	4.1 ± 1.3	0.021	5.6 ± 0.5	4.4 ± 0.3	<0.001
AS									
basal	3.4 ± 0.4	3.5 ± 0.9	0.640	3.4 ± 0.4	2.9 ± 0.1	0.013	3.4 ± 0.4	2.8 ± 0.4	0.029
middle	4.5 ± 0.7	4.6 ± 0.4	0.959	4.5 ± 0.7	4.7 ± 0.7	0.746	4.3 ± 0.4	3.5 ± 0.4	0.009
apical	5.6 ± 0.4	5.2 ± 0.6	0.207	5.3 ± 0.2	4.8 ± 0.6	0.115	5.3 ± 0.2	3.5 ± 1.1	0.002
IS									
basal	5.1 ± 0.3	5.0 ± 0.2	0.444	5.0 ± 0.2	4.0 ± 0.2	<0.001	5.0 ± 0.2	4.2 ± 0.4	0.002
middle	5.9 ± 1.0	6.1 ± 0.4	0.630	5.4 ± 0.8	4.6 ± 0.6	0.065	5.3 ± 0.7	5.1 ± 0.5	0.695
apical	6.7 ± 0.3	6.4 ± 0.1	0.080	6.3 ± 0.2	6.4 ± 0.3	0.468	6.0 ± 0.1	5.5 ± 0.7	0.145
I									
basal	6.2 ± 0.5	6.3 ± 0.3	0.793	6.2 ± 0.5	6.1 ± 0.3	0.517	6.0 ± 0.3	5.9 ± 0.9	0.631
middle	6.4 ± 0.5	6.6 ± 0.2	0.504	6.3 ± 0.5	6.2 ± 0.3	0.550	6.1 ± 0.4	6.1 ± 0.1	0.663
apical	6.5 ± 0.3	6.5 ± 0.1	0.801	6.3 ± 0.1	6.3 ± 0.3	0.819	6.1 ± 0.2	5.9 ± 0.3	0.341
IL									
basal	6.4 ± 0.3	6.4 ± 0.2	1.000	6.2 ± 0.3	6.1 ± 0.6	0.900	6.0 ± 0.3	4.5 ± 0.4	0.000
middle	6.1 ± 0.3	6.3 ± 0.6	0.552	6.2 ± 0.2	6.1 ± 0.3	0.830	6.0 ± 0.2	6.1 ± 0.2	0.202
apical	6.4 ± 0.3	6.3 ± 0.3	0.641	6.2 ± 0.1	5.9 ± 1.0	0.488	5.9 ± 0.2	5.8 ± 0.3	0.276
AL									
basal	6.3 ± 0.3	6.4 ± 0.4	0.929	6.3 ± 0.3	5.2 ± 0.4	<0.001	6.0 ± 0.2	4.8 ± 0.6	<0.001
middle	6.0 ± 0.3	6.1 ± 0.4	0.777	6.0 ± 0.3	6.0 ± 0.6	0.951	5.8 ± 0.2	5.8 ± 0.5	0.888
apical	6.2 ± 0.5	6.5 ± 0.4	0.325	6.1 ± 0.4	6.3 ± 0.2	0.313	6.1 ± 0.4	3.9 ± 0.5	<0.001
Apex									
A	6.1 ± 0.3	5.9 ± 0.6	0.499	6.1 ± 0.3	3.4 ± 1.4	0.001	6.1 ± 0.3	3.5 ± 0.6	<0.001
I	6.1 ± 0.6	5.7 ± 0.3	0.151	5.9 ± 0.5	5.7 ± 1.2	0.703	6.0 ± 0.5	3.2 ± 0.4	<0.001

WM = wall motion; pre-rad = before irradiation; post-rad = post-irradiation; Mo = month; A = anterior; AS = anteroseptal; IS = inferoseptal; I = inferior; IL = inferolateral; AL = anterolateral



Supplemental Figure 1. Masson staining of myocardium in the control group (A) and in the irradiation group at 3, 6, and 12 mo (B-D) after irradiation with x200 magnification; myocardial interstitial fibrosis was progressively increased with time prolonged after irradiation.



Supplemental Figure 2. CD31 immunohistochemical staining of myocardium in the control group (A) and in the irradiation group at 3, 6, and 12 mo (B-D) with x200 magnification; Myocardial interstitial microvessel density was significantly increased in the irradiation area at three months after irradiation and gradually decreased at 6 and 12 mo after irradiation.