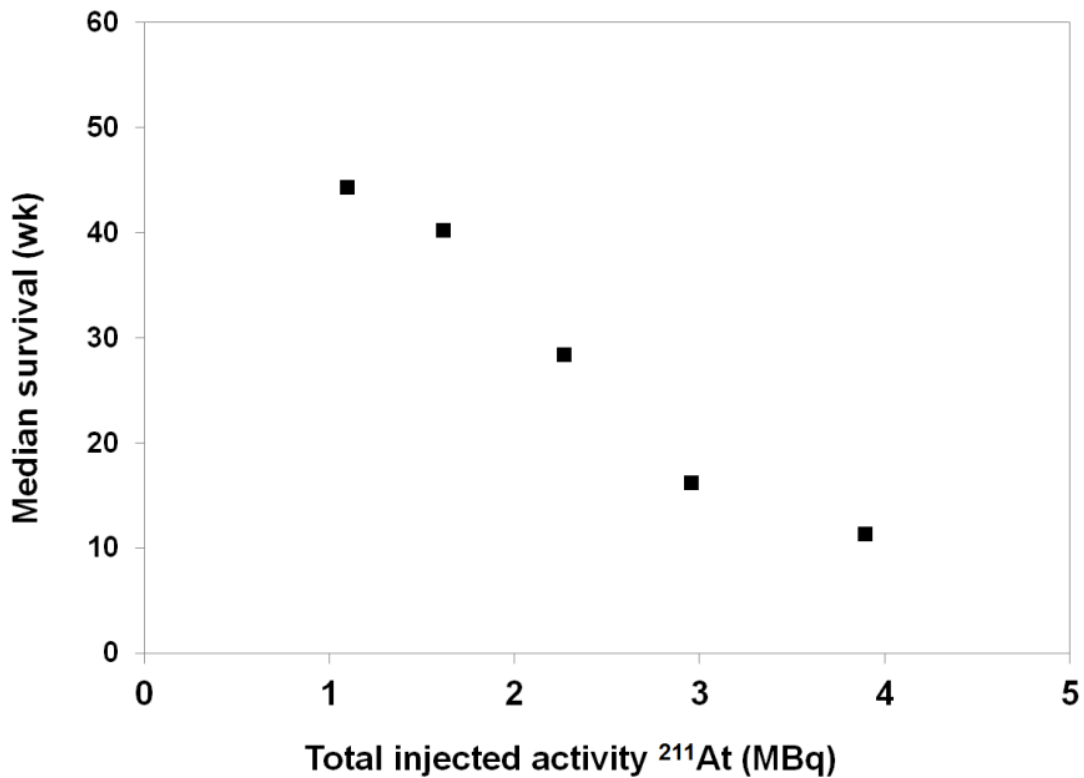


Suppl. Figure 1. Comparison of the tumor uptake for tumors not being treated before with the uptake of tumors having received a prior α -RIT treatment. Tumor uptake (%IA/g) is plotted versus time after injection. Grey curve shows tumor uptake from a previous biodistribution study (15).



Suppl. Figure 2. Median survival as a function of total injected activity (sum all fractions). Groups with undefined median survival (alive at study termination) are excluded. All tumors remaining after the tumor-growth monitoring period were surgically removed when exceeding 15 mm or at signs of ulcerated skin. The survival data therefore reflect other causes of death than progression of the primary subcutaneous tumors, e.g. systemic radiotoxicity of alpha-RIT.