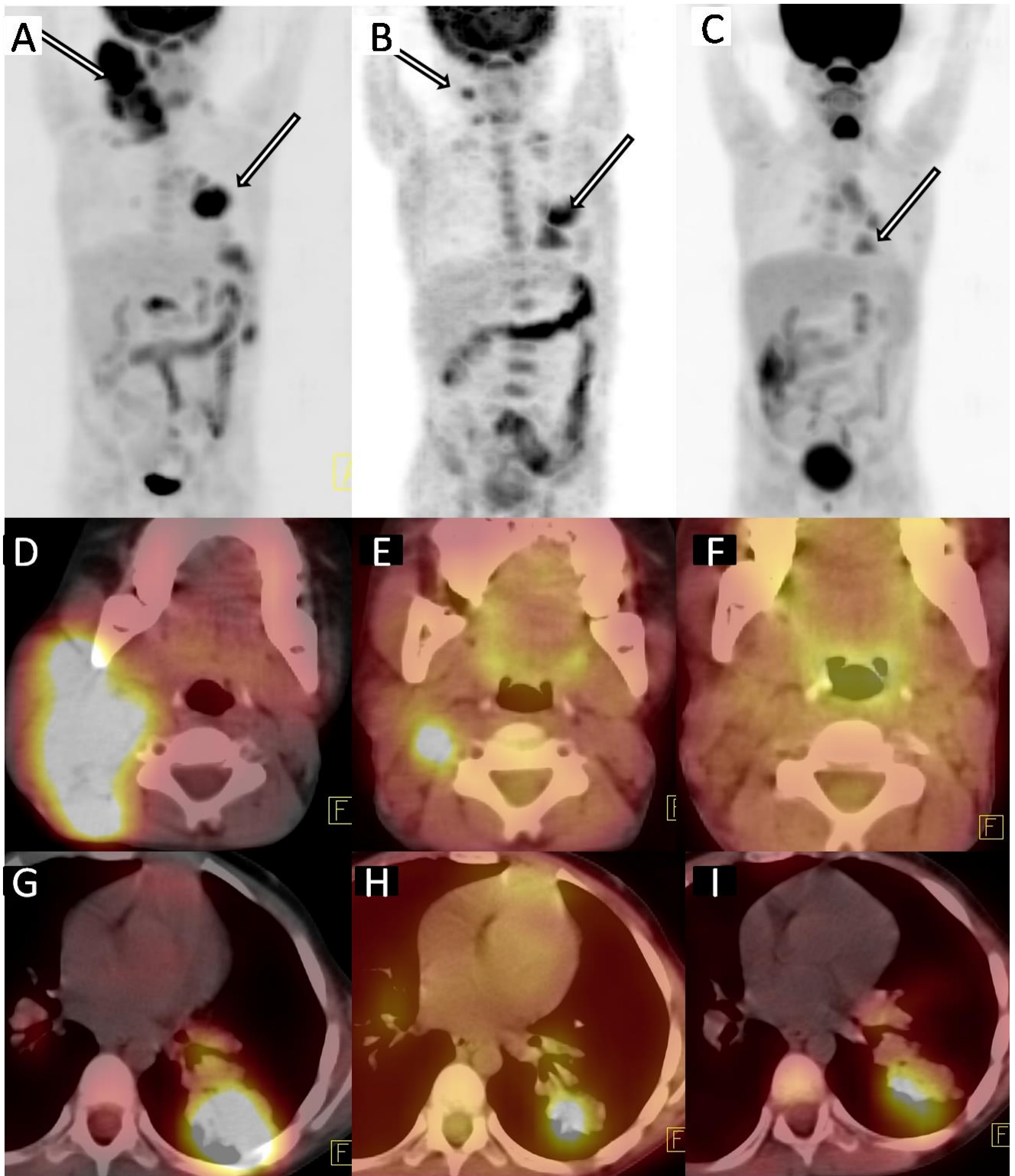
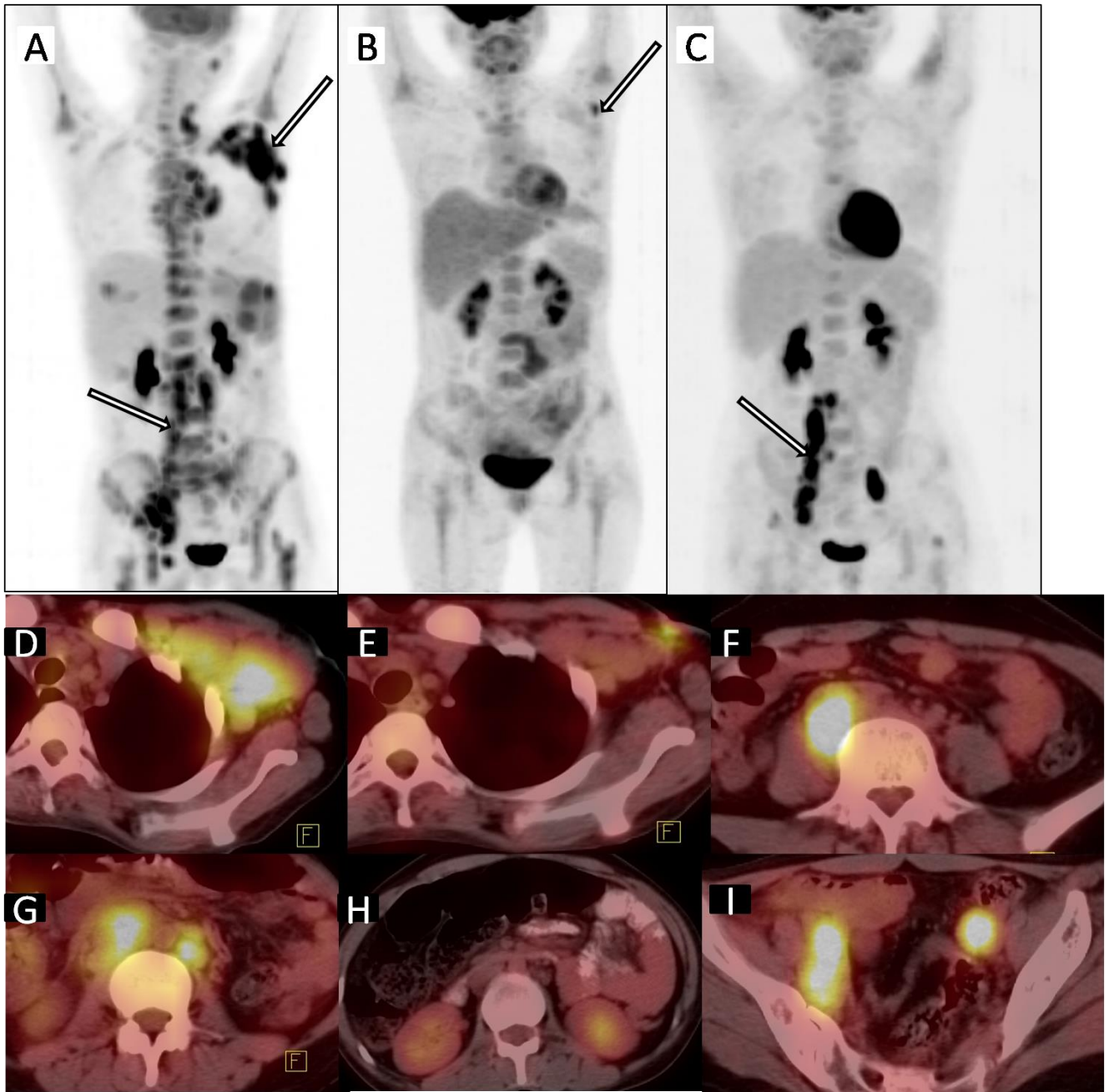


SUPPLEMENTAL FIGURE 1: Baseline PET-CT image of patient no. 48 who had involvement of cervical , mediastinal and retroperitoneal lymph nodes and spleen involvement (A,B) with additional involvement of liver (arrow in C) and bone marrow (arrow in B) not detected CECT (D). (Upstaging at baseline).

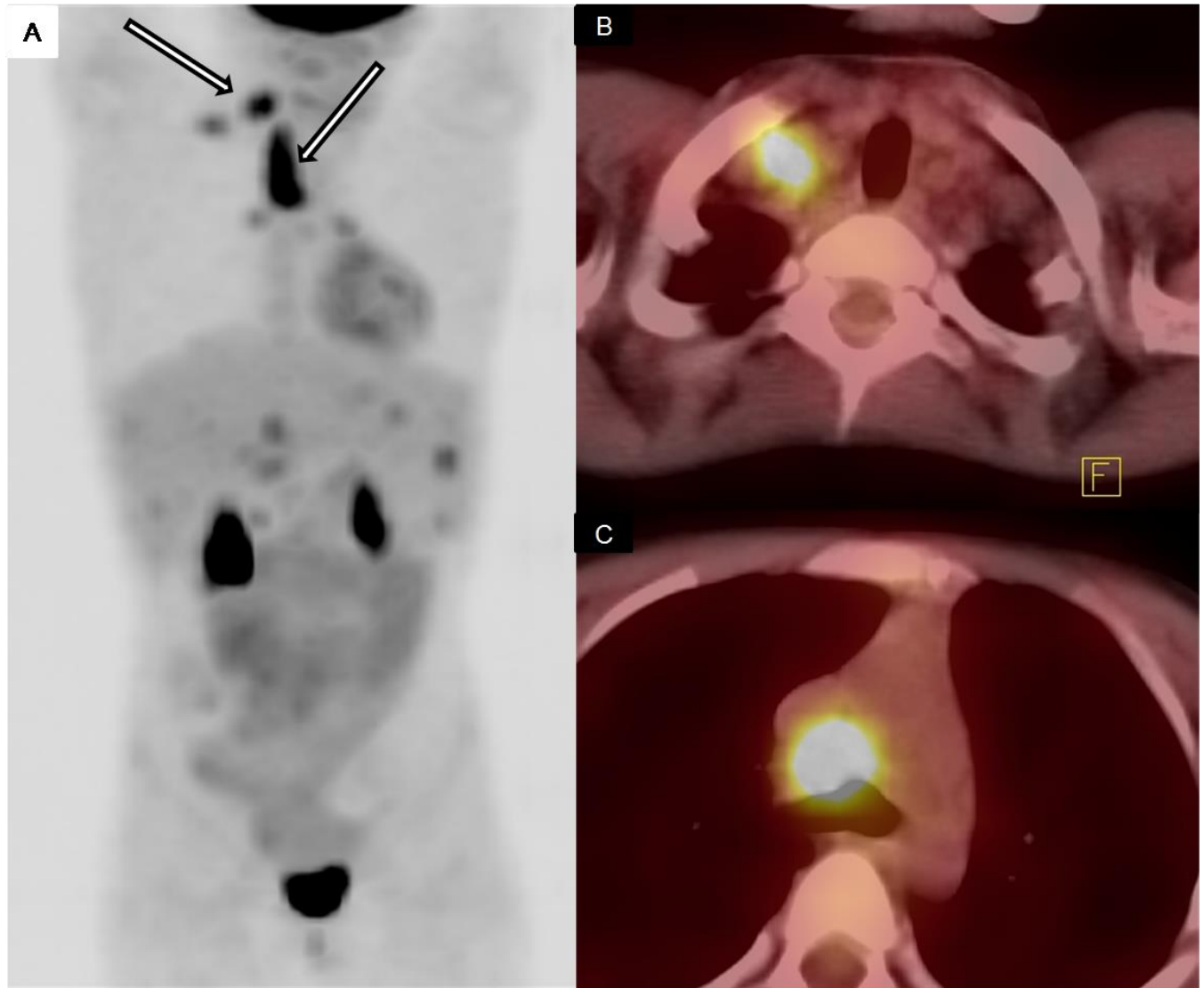


SUPPLEMENTAL FIGURE 2: PET-CT image of patient 53 at baseline (A, D, G), interim (B, E, H) and end of treatment (C, F, I) showing interim PET-CT positivity by both RIW and Deauville criteria in lung

and right cervical lymph node (arrows) which have resolved at the end of treatment (False positive interim PET).



SUPPLEMENTAL FIGURE 3: PET-CT image of patient no 17 at baseline (A, D, G), interim (B, E, H) and end of treatment (C, F, I) which was Deauville score 3 (CR) at interim assessment with Deauville criteria and Deauville score 5 (C, F, I) in retroperitoneal lymph nodes (arrows) which was negative in previous scan (B, E, H) (True Positive at end of treatment).



SUPPLEMENTAL FIGURE 4: PET-CT image of patient no 21 at end of treatment showing PET-CT positivity at mediastinal lymph node (arrows in A, B ,C) which was positive for tuberculosis on biopsy. Patient received anti-tubercular therapy and is disease free at last follow up (False positive at end of treatment).

Supplemental Table 1: Baseline staging, response and follow up in study patients

Patient No	CT Stage	PET Stage	Cause for upstaging/ downstaging*	CT-2	PET/CT-2 (RIW)	PET/CT-2 (DC)	CT-3	PET/CT-3 (RIW)	PET/CT-3 (DA)	Outcome	RT
1	2	4	Uptake in bone marrow	PR	PR	PR	CR	CR	NA	Alive at 94.4 months	Yes
2	1	1	-	CR	PR	PR	CR	CR	CR	Alive at 94.2 months	Yes
3	3	3	-	PR	CR	CR	CR	CR	CR	Alive at 84.2 months	Yes
4	1	1	-	PR	CR	CR	CR	CR	CR	Alive at 86.2 months	Yes
5	3	3	-	PR	PR	NA	PD	PD	NA	Alive at 86.5 months	-
6	3	2	No uptake in RPLN	PR	CR	CR	CR	CR	CR	Alive at 90.7 months	-
7	1	3	Uptake in RPLN, spleen	PR	CR	CR	CR	PD	CR	Alive at 87.7 months	Yes
8	2	2	-	PR	PR	PR	PR	CR	CR	Alive at 90.0 months	Yes
9	2	2	-	PR	CR	CR	CR	CR	CR	Alive at 90.2 months	Yes
10	3	3	-	PR	PR	NA	CR	PR	CR	Alive at 90.4 months	-
11	2	2	-	CR	CR	CR	CR	CR	CR	Alive at 90.5 months	Yes
12	1	2	Uptake in mediastinal LN	PR	CR	CR	PR	CR	CR	Alive at 90.6 months	Yes
13	2	1	Uptake only in right cervical LN	PR	CR	CR	PR	CR	CR	Alive at 91.8 months	Yes
14	3	3	-	PR	PR	PR	CR	PR	CR	Alive at 92.1 months	Yes
15	3	4	Uptake in bone marrow	PR	PR	CR	CR	CR	CR	Alive at 95.6 months	Yes
16	2	2	-	CR	PR	PR	CR	PR	CR	Alive at 96.7 months	Yes
17	4	4	-	PR	PR	PR	PD	PD	PD	Relapse at 8.6 months Died at 11.2 months	Yes
18	1	3	Uptake in RPLN, spleen	PR	CR	CR	CR	CR	CR	Alive at 97.3 months	Yes
19	4	4	-	CR	PR	PR	CR	CR	CR	Alive at 97.5 months	-
20	1	4	Uptake in vertebrae, spleen	PR	CR	CR	NA	NA	NA	Alive at 94.4 months	Yes
21	2	3	Uptake in mediastinal LN	PR	CR	CR	PR	PD	PD	Alive at 94 months	-
22	1	1	-	CR	CR	CR	CR	CR	CR	Alive at 94 months	Yes
23	1	1	-	CR	CR	CR	CR	CR	CR	Alive at 92.9 months	Yes
24	1	1	-	CR	PR	NA	CR	CR	CR	Alive at 90.9 months	Yes
25	2	2	-	PR	PR	CR	PR	CR	CR	Alive at 43.9 months	-
26	1	2	Uptake in bilateral cervical LN	PR	CR	CR	CR	CR	CR	Alive at 85.1 months	Yes
27	2	2	-	CR	CR	CR	CR	CR	CR	Alive at 81.6 months	Yes
28	2	4	Uptake in spleen, bone marrow	PR	CR	CR	CR	CR	CR	Alive at 64.2 months	-
29	4	4	-	PR	PR	PR	CR	CR	CR	Alive at 82.3 months	-
30	1	1	-	PR	CR	CR	CR	CR	CR	Relapse at 65 months Alive at 80.2 months	Yes
31	2	2	-	CR	CR	CR	CR	CR	CR	Lost to follow up after 18 months	-
32	1	1	-	PR	CR	CR	CR	CR	CR	Alive at 80.2 months	Yes
33	3	2	No uptake in RPLN	CR	PR	NA	CR	CR	CR	Alive at 44.1 months	-
34	2	3	Uptake in spleen	PR	CR	CR	PR	CR	CR	Alive at 80.5 months	Yes
35	2	3	Uptake in cervical, mediastinal LN	PR	CR	CR	CR	CR	CR	Relapsed at 11 months Died at 41.4 months	-
36	3	3	-	CR	CR	CR	CR	CR	CR	Relapse at 28 months Alive at 74.8 months	-
37	3	4	Uptake in left pelvic bone	PR	CR	CR	CR	CR	CR	Alive at 81.3 months	-
38	3	3	-	CR	CR	CR	CR	CR	CR	Alive at 74.3 months	-
39	1	3	Uptake in mediastinum, spleen	CR	CR	CR	CR	CR	CR	Alive at 76 months	Yes
40	4	4	-	CR	CR	CR	CR	CR	CR	Alive at 76.9 months	-
41	2	2	-	CR	CR	CR	CR	CR	CR	Alive at 76.2 months	Yes
42	4	4	-	PR	CR	CR	CR	CR	CR	Alive at 75.8 months	-
43	4	4	-	CR	CR	CR	CR	CR	CR	Alive at 77.2 months	-
44	2	3	Uptake in RPLN	CR	CR	CR	CR	CR	CR	Alive at 79.1 months	Yes
45	2	3	Uptake in RPLN, spleen	PR	PR	PR	CR	CR	CR	Alive at 78.6 months	Yes
46	2	3	Uptake in spleen	PR	PR	CR	PR	CR	CR	Alive at 73.6 months	Yes
47	2	1	Uptake only in right cervical LN	CR	CR	CR	CR	CR	CR	Alive at 73.2 months	Yes
48	3	4	Uptake in bone marrow, liver	PR	PR	PR	PR	NA	NA	Alive at 72.9 months	-
49	1	1	-	CR	CR	CR	CR	CR	CR	Alive at 71.1 months	Yes
50	1	3	Uptake in RPLN, spleen	PR	CR	CR	PR	CR	CR	Alive at 73.9 months	Yes
51	4	4	-	PR	CR	CR	PR	CR	CR	Alive at 69.9 months	Yes
52	3	3	-	CR	PR	CR	CR	PD	PD	Alive at 72.7 months	-
53	3	4	Uptake in lung, vertebrae	PR	PR	PR	PR	CR	CR	Alive at 60.5 months	Yes
54	1	2	-	CR	CR	CR	CR	CR	CR	Alive at 94.7 months	Yes
55	1	3	Uptake in RPLN, spleen	CR	PR	CR	CR	CR	NA	Alive at 87.9 months	Yes
56	2	3	Uptake in left cervical LN	PR	PR	PR	CR	CR	CR	Alive at 84.8 months	-
57	2	3	Uptake in RPLN, spleen	CR	CR	CR	CR	CR	CR	Died at 11 months due to pulmonary toxicity	Yes

*Additional sites of involvement seen on PET-CT or only site of involvement in case of down staging are shown. LN-lymph node, RPLN- retroperitoneal lymph node, RIW= Revised International Working group response criteria, DC-Deauville criteria, RT- Radiotherapy, CR-Complete response, PR-partial response