

Supplemental Table 1. Baseline hemoglobin parameters between pCR and non-pCR

A. All patients (n = 84)

	non-pCR (n = 68)		pCR (n = 16)		<i>p</i> -value
	Median	95% CI	Median	95% CI	
O <sub>2</sub> Hb (μM)	25.9	24.1–29.6	24.3	20.1–38.7	0.5
HHb (μM)	7.8	6.8–8.7	7.5	5.5–10.8	0.4
tHb (μM)	33.5	31.2–38.3	31.1	25.7–49.8	0.4
stO <sub>2</sub> (%)	77.2	75.9–78.5	77.7	76.2–79.6	0.5

B. Luminal breast cancer patients\* (n = 48)

	non-pCR (n = 42)		pCR (n = 6)		<i>p</i> -value
	Median	95% CI	Median	95% CI	
O <sub>2</sub> Hb (μM)	25	22.9–27.4	29.6	14.9–50.9	0.9
HHb (μM)	7.6	6.5–8.7	8.6	4.9–15.1	0.9
tHb (μM)	32.4	30.1–34.9	38.3	20.0–66.0	0.8
stO <sub>2</sub> (%)	77	74.8–78.4	77.1	74.6–78.6	0.9

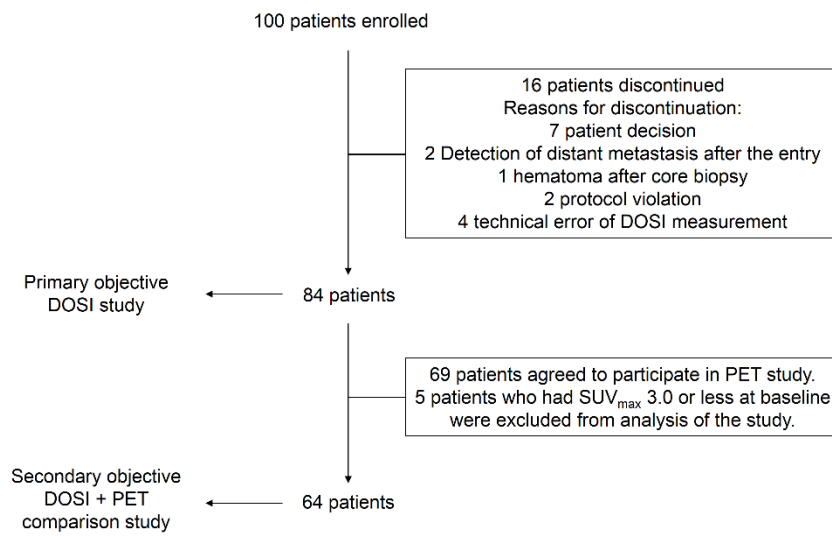
C. Triple-negative breast cancer patients (n = 26)

	non-pCR (n = 22)		pCR (n = 4)		<i>p</i> -value
	Median	95% CI	Median	95% CI	
O <sub>2</sub> Hb (μM)	30.9	24.1–38.8	22.7	-	0.2
HHb (μM)	8.5	6.7–12.7	7.5	-	0.2
tHb (μM)	38.8	31.3–51.9	30.1	-	0.2
stO <sub>2</sub> (%)	77.8	75.7–79.4	78.1	-	0.5

D. HER2-positive breast cancer patients (n = 18)

	non-pCR (n = 8)		pCR (n = 10)		<i>p</i> -value
	Median	95% CI	Median	95% CI	
HbO <sub>2</sub> (μM)	25	15.3–43.0	34	19.7–42.3	0.5
HHb (μM)	25	15.3–43.0	34	19.7–42.3	0.5
tHb (μM)	32.1	20.4–57.7	42.5	26.4–54.0	0.5
stO <sub>2</sub> (%)	75.9	72.2–80.4	78.2	76.2–79.6	0.5

\* Including eight patients with luminal-HER2 subtype



Supplemental Figure 1.