

Supplemental Table 1. Clinical, echocardiographic and positron emission tomography characteristics of all amyloid and hypertensive control subjects.

Variable	Hypertensive control (n=4)	All amyloid patients (n=10)	*p value between 2 groups	AL subtype (n=5)	ATTR subtype (n=5)	†p value between 3 groups
Age (years)	61.3±4.3	67.9±8.9	0.26	63.2±6.3	72.6±9.2	0.13
Male sex (%)	75.0	90.0	0.51	80.0	100	>0.99
Body surface area (m ²)	2.07±0.27	1.98±0.11	0.26	2.00±0.13	1.96±0.11	0.42
Body mass index (kg/m ²)	32.0±4.6	27.4±3.5	0.16	28.6±3.5	26.1±3.3	0.26
Systolic blood pressure (mmHg)	178±40	128±24	0.047	130±32	125±17	0.14
Diastolic blood pressure (mmHg)	96±13	78±12	0.034	81±9	76±7	0.11
Heart rate (beats/min)	65±17	70±15	0.72	82±9	59±11	0.08
GFR (mL/min/1.73 m ²)	96±21	60±25	0.023	65±31	55±21	0.07
Cardiac troponin I (μg/L)	0.019±0.003	0.075±0.080	0.07	0.043±0.035	0.107±0.103	0.06
BNP (ng/L)	<50	531±548	—	357±364	705±683	—
Interventricular septal wall thickness (mm)	14.0±1.3	16.9±2.0	0.024	16.5±2.7	17.3±1.1	0.06
Posterior wall thickness (mm)	12.6±1.8	16.0±2.0	0.024	15.5±2.4	16.4±1.6	0.07
Relative wall thickness	0.52±0.07	0.81±0.18	0.006	0.76±0.17 [‡]	0.86±0.19 [‡]	0.020
LV mass index (g/m ²)	130±32	141±33	0.57	139±34	143±37	0.85
LVEDVI (mL/m ²)	60.0±7.5	56.4±15.4	0.40	54.6±9.2	58.1±20.9	0.70
LVESVI (mL/m ²)	23.7±5.4	28.3±12.0	0.57	25.8±5.7	30.8±16.5	0.60
LVEF (%)	60.8±4.6	50.6±10.2	0.07	51.8±12.2	49.5±9.0	0.17
Stroke volume index (mL/m ²)	41.7±7.1	25.3±6.9	0.011	25.0±8.3	25.5±6.1	0.036
Cardiac index (L/min/m ²)	2.7±0.8	1.7±0.5	0.024	2.0±0.5	1.46±0.24 [‡]	0.022
Transmitral E wave (m/s)	0.52±0.05	0.82±0.26	0.007	0.94±0.33 [‡]	0.70±0.10	0.021
Transmitral E/A ratio	0.80±0.10	2.66±1.92	0.031	2.36±1.56	3.03±2.50	0.08
Transmitral deceleration time (ms)	280±40	178±58	0.011	175±64	181±59	0.035
Mitral annular s' velocity (cm/s)	7.3±1.7	4.7±1.5	0.028	5.4±1.4	4.0±1.3	0.034
Mitral annular e' velocity (cm/s)	5.7±0.3	4.5±1.2	0.06	4.8±0.8	4.2±1.5	0.15
Mitral E/e' ratio	9.4±1.2	19.0±5.9	0.005	19.6±5.5 [‡]	18.4±6.8 [‡]	0.017
RV free wall thickness (mm)	5.5±0.7	10.5±3.0	0.007	8.7±1.9	12.3±2.9 [‡]	0.008
RV end-diastolic area (cm ²)	25.9±1.2	21.4±3.3	0.024	21.4±3.9	21.5±2.9	0.08
RV end-systolic area (cm ²)	14.0±0.9	12.7±3.2	0.48	12.8±3.8	12.5±3.0	0.78
RV fractional area change (%)	45.9±2.7	41.6±8.3	0.48	40.9±9.3	42.3±8.2	0.77
Tricuspid annular s' velocity (cm/s)	13.5±2.3	8.0±2.7	0.016	8.1±2.3	8.0±3.3	0.054
LV global longitudinal strain (%)	-17.4±1.4	-9.5±2.1	0.005	-9.8±2.7 [‡]	-9.1±1.5 [‡]	0.018
RV free wall longitudinal strain (%)	-25.3±4.5	-14.8±4.0	0.007	-16.5±7.8	-14.6±3.3 [‡]	0.027
SUV ₀₋₅	3.99±0.79	4.31±1.20	0.89	4.89±1.43	3.73±0.56	0.39
SUV ₁₅₋₂₀	1.15±0.16	3.39±1.36	0.005	4.09±1.66 [‡]	2.68±0.37 [‡]	0.010
Myocardial ¹⁸ F-florbetaben RI (min ⁻¹)	0.011±0.003	0.040±0.013	0.005	0.046±0.014 [‡]	0.033±0.008 [‡]	0.011
Percentage myocardial ¹⁸ F-florbetaben retention	29.4±4.5	83.1±38.2	0.005	92.2±51.9 [‡]	74.0±19.7 [‡]	0.018

*p value between all amyloid patients and hypertensive control by Mann-Whitney *U* test for continuous data.

†p value between AL amyloid, ATTR amyloid and hypertensive control by Kruskal Wallis test for continuous data, and exact-chi square test for categorical data.

‡p value <0.05 versus hypertensive controls with Bonferroni correction.

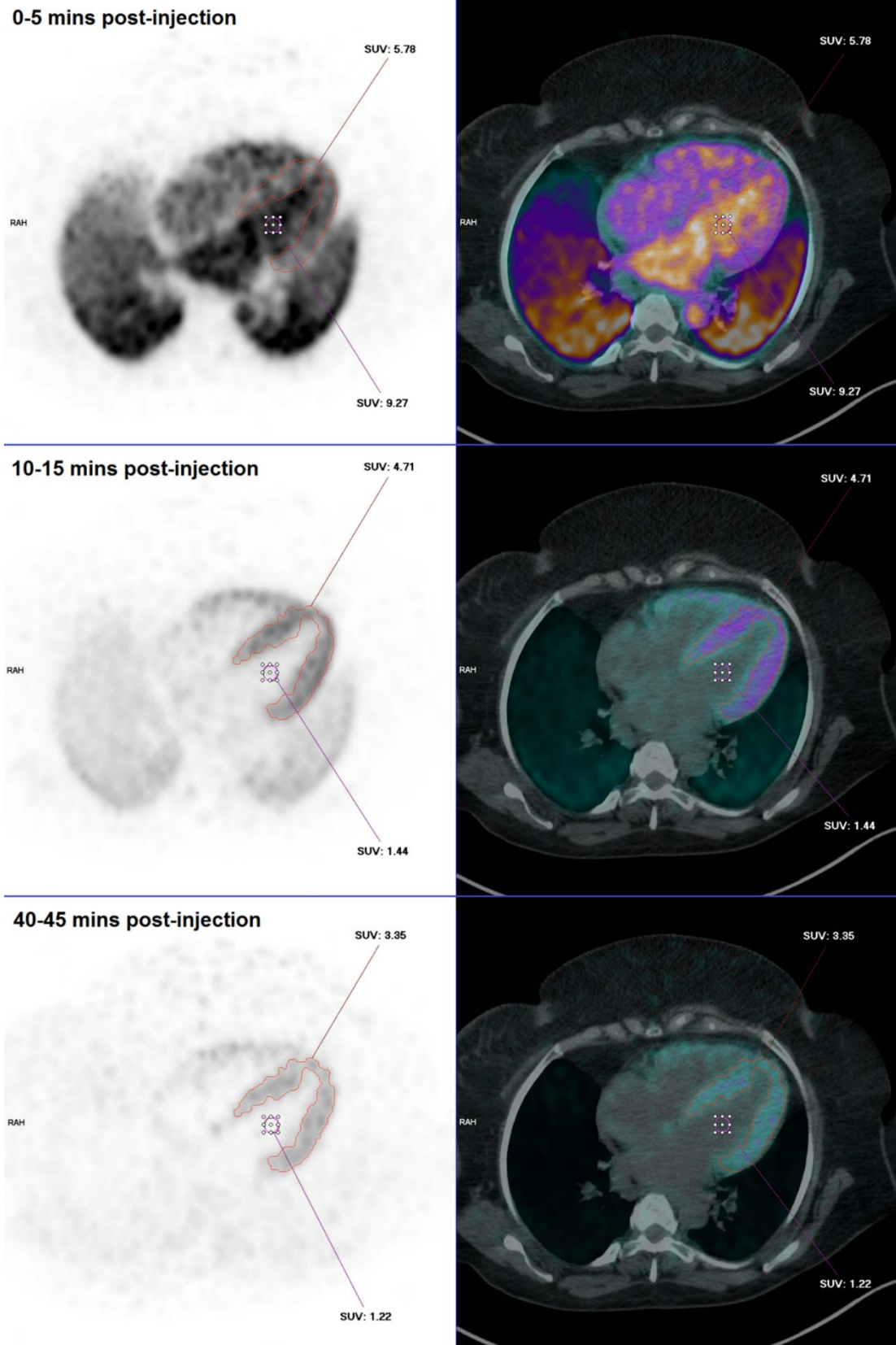
BNP: B-type natriuretic peptide; EDVI: end-diastolic volume index; ESVI: end-systolic volume index; EF: ejection fraction; GFR: glomerular filtration rate; LV: left ventricular; RV: right ventricular; SUV₀₋₅: LV myocardial standardized uptake value between 0 and 5 min; SUV₁₅₋₂₀: LV myocardial standardized uptake value between 15 and 20 min; RI: retention index.

Supplemental Table 2. Multiple linear regression models for left ventricular global longitudinal strain and right ventricular free wall longitudinal strain

Variable	<u>Univariable</u>		<u>Multivariable</u>	
	Standardized β	p value	Standardized β	p value
<u>LV global longitudinal strain*</u>				
Systolic blood pressure	-0.677	0.008		
Diastolic blood pressure	-0.672	0.009		
Interventricular septal wall thickness	0.550	0.042		
Posterior wall thickness	0.628	0.016	0.206	0.15
Inverse percentage myocardial ^{18}F -florbetaben retention	-0.912	<0.001	-0.804	<0.001
<u>RV free wall longitudinal strain*</u>				
RV free wall thickness	0.693	0.006	0.290	0.23
Interventricular septal wall thickness	0.536	0.048		
Inverse percentage myocardial ^{18}F -florbetaben retention	-0.800	0.001	-0.607	0.021

*Only posterior wall thickness and inverse percentage myocardial ^{18}F -florbetaben retention were entered into the multivariable because of significant colinearities between the univariable predictors.

LV: left ventricular; RV: right ventricular.



Supplemental Figure 1. Transposition of the obtained myocardial contour to the remainder of the frames for dynamic analysis.