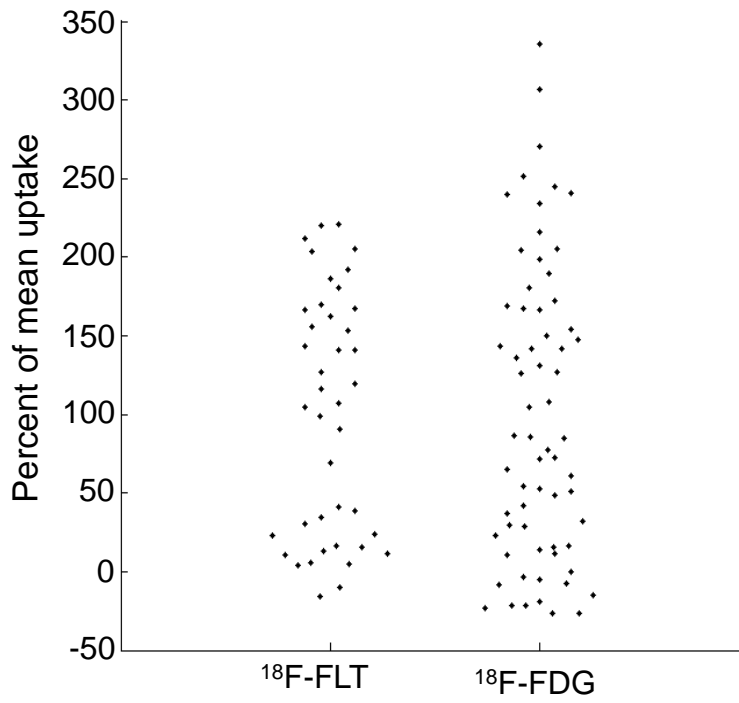


Supplemental Figure 1: (A) Automated clustering applied to single-cell ^{18}F -FLT measurements (20% serum), using a gaussian mixture model with 2 clusters. The symbols \times and \diamond represent single cells in the ^{18}F -FLT–low and ^{18}F -FLT–high clusters, as determined by clustering. (B) Cumulative distribution function (CDF) for the experimentally measured ^{18}F -FLT uptake (*blue*), and maximum-likelihood curve fitting using 1-gaussian model (*red*) and 2-gaussian mixture model (*orange*).



Supplemental Figure 2: Typical single-cell distribution of ^{18}F -FLT and ^{18}F -FDG, normalized to average population uptake.