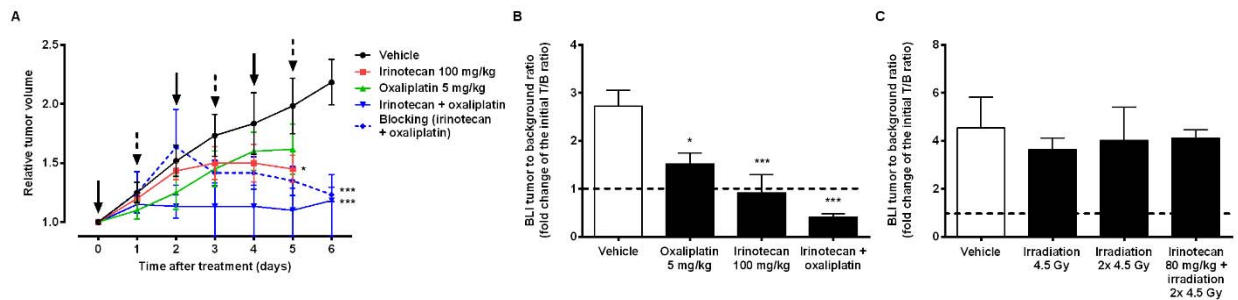
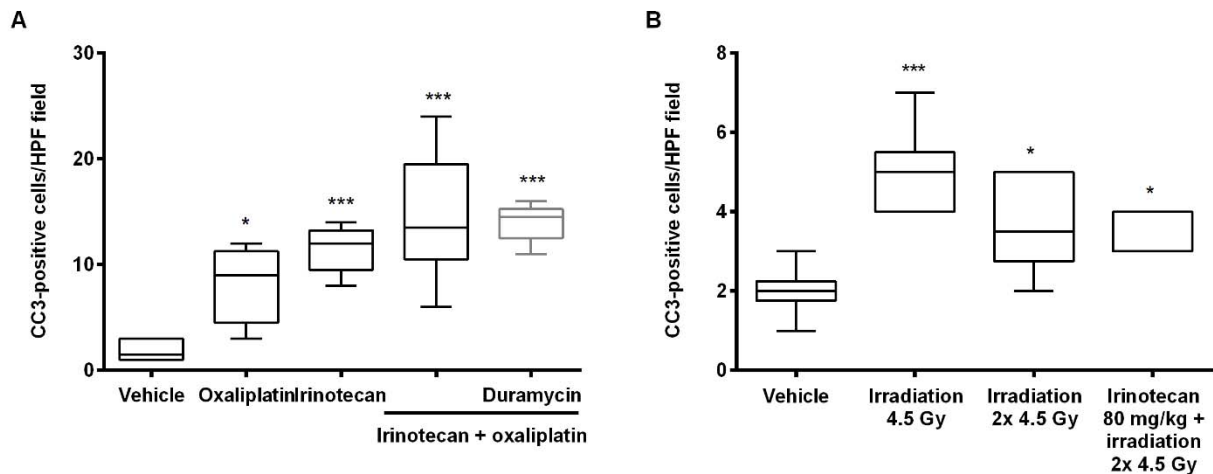


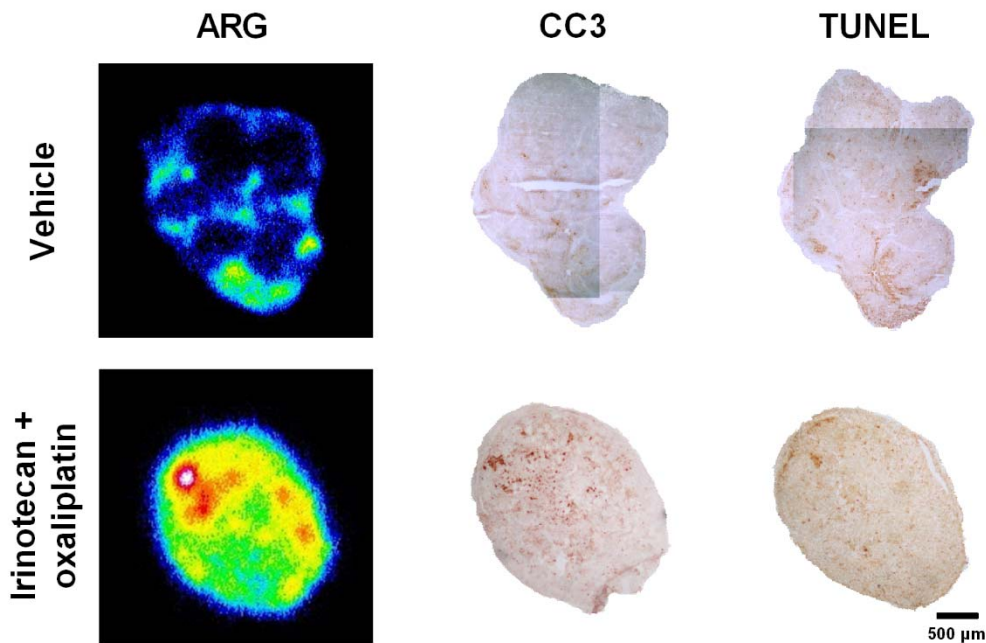
SUPPLEMENTAL FIGURE 1. Cell death detection in COLO205 cells after treatment with (A) chemotherapy and (B) radiotherapy measured by Caspase-3/7 assay. *** $p < 0.001$.



SUPPLEMENTAL FIGURE 2. (A) Tumor growth in COLO205 tumors treated with chemotherapy obtained by caliper measurements. The solid arrows indicate the days of monotherapy administration and both solid and dashed arrows show the days of combination therapy administration. * $p < 0.05$ and *** $p < 0.001$ significantly different from the vehicle at day 5 (D5) and 6 (D6), respectively. BLI signal change after tumor treatment: (B) chemotherapy and (C) radiotherapy. * $p < 0.05$, *** $p < 0.001$.



SUPPLEMENTAL FIGURE 3. Quantitative analysis of the levels of CC3-positive cells in the (A) chemotherapy- and (B) radiotherapy-treated tumors. * $p < 0.05$, *** $p < 0.001$.



SUPPLEMENTAL FIGURE 4. Representative autoradiography and microscopy images of adjacent histologic COLO205 tumor slices stained with CC3 and TUNEL.