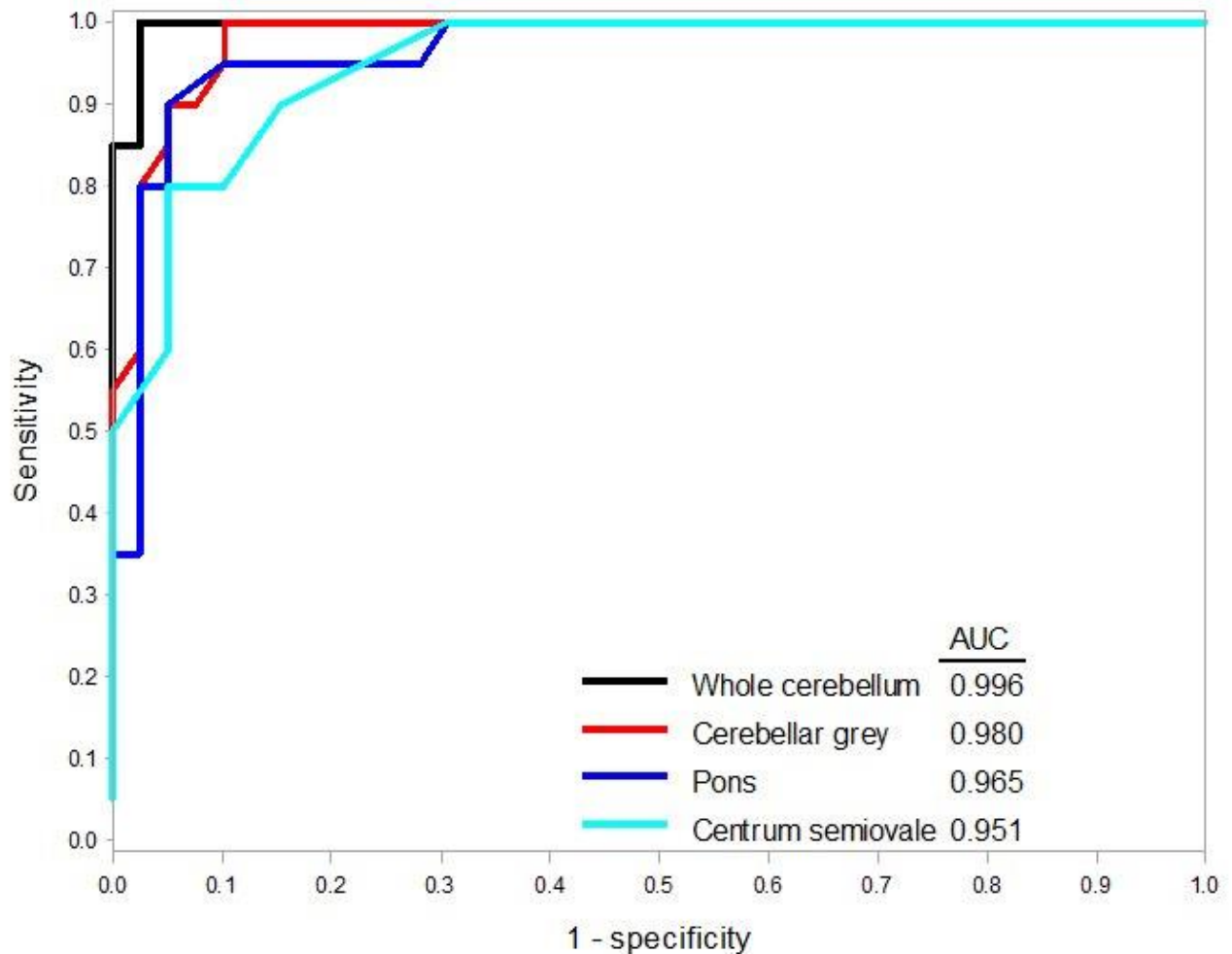
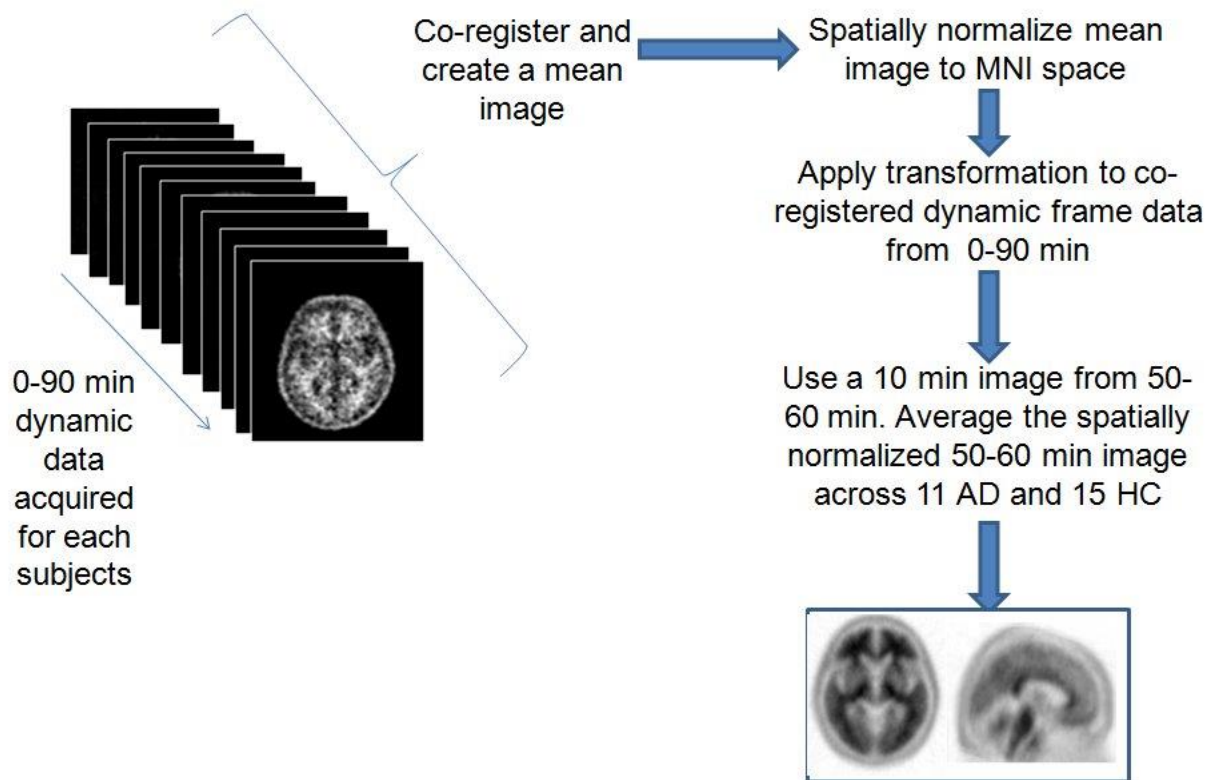


Supplemental Figure 1. ^{18}F -Florbetapir PET template in MNI brain atlas space created by averaging PET images from clinically diagnosed AD ($n = 11$) and cognitively normal ($n = 15$) subjects.



Supplemental Figure 2. Receiver-operating-characteristic curves showing pathology-positive and -negative discrimination based on AUCs in subjects, where mcSUVrs were calculated using 4 different reference regions (whole cerebellum, cerebellar gray, pons, and centrum semiovale).



Supplemental Figure 3. Creation of standard ^{18}F -florbetapir PET template in MNI space using the 10-min image at 50 min after injection from 15 HC and 11 AD subjects.