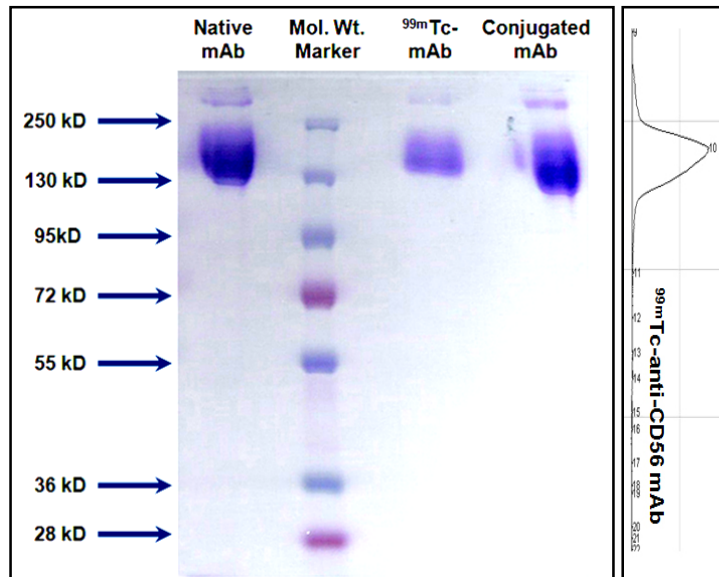
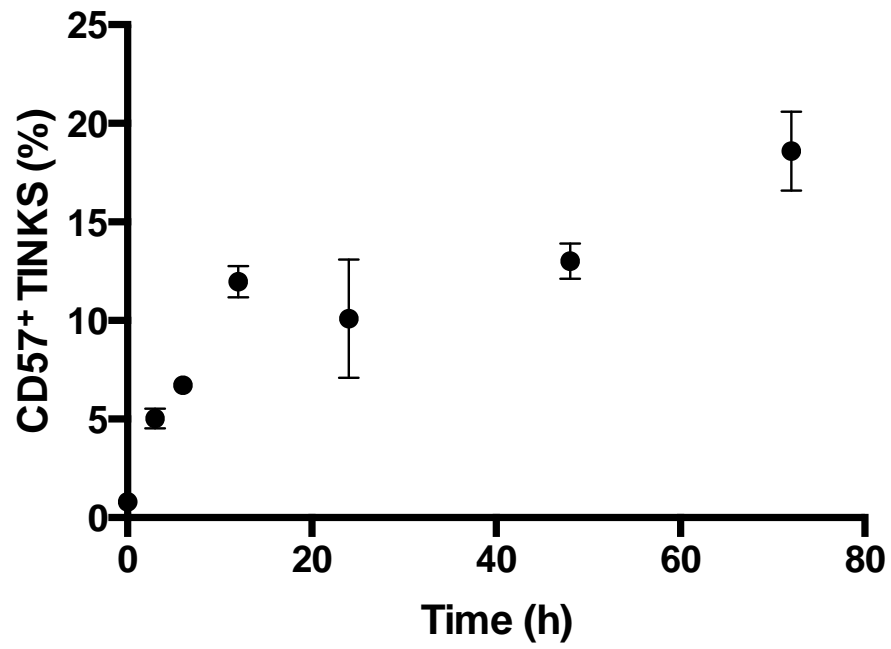


Supplemental Figure 1. Cysteine challenge assay of radiolabelled ^{99m}Tc -anti-CD56 mAb assessed by ITLC-SG at an increasing ratio between cysteine and mAb.



Supplemental Figure 2. SDS-PAGE analysis of native, conjugated and radiolabelled ^{99m}Tc -anti-CD56 mAb in non-reducing conditions. The gel was also analyzed with a radioscaner to evaluate the radioactivity associated with each band.



Supplemental Figure 3. Kinetics of TINKs revealed by immunohistochemistry staining for CD57. Data are expressed as % of CD57⁺ cells over time.