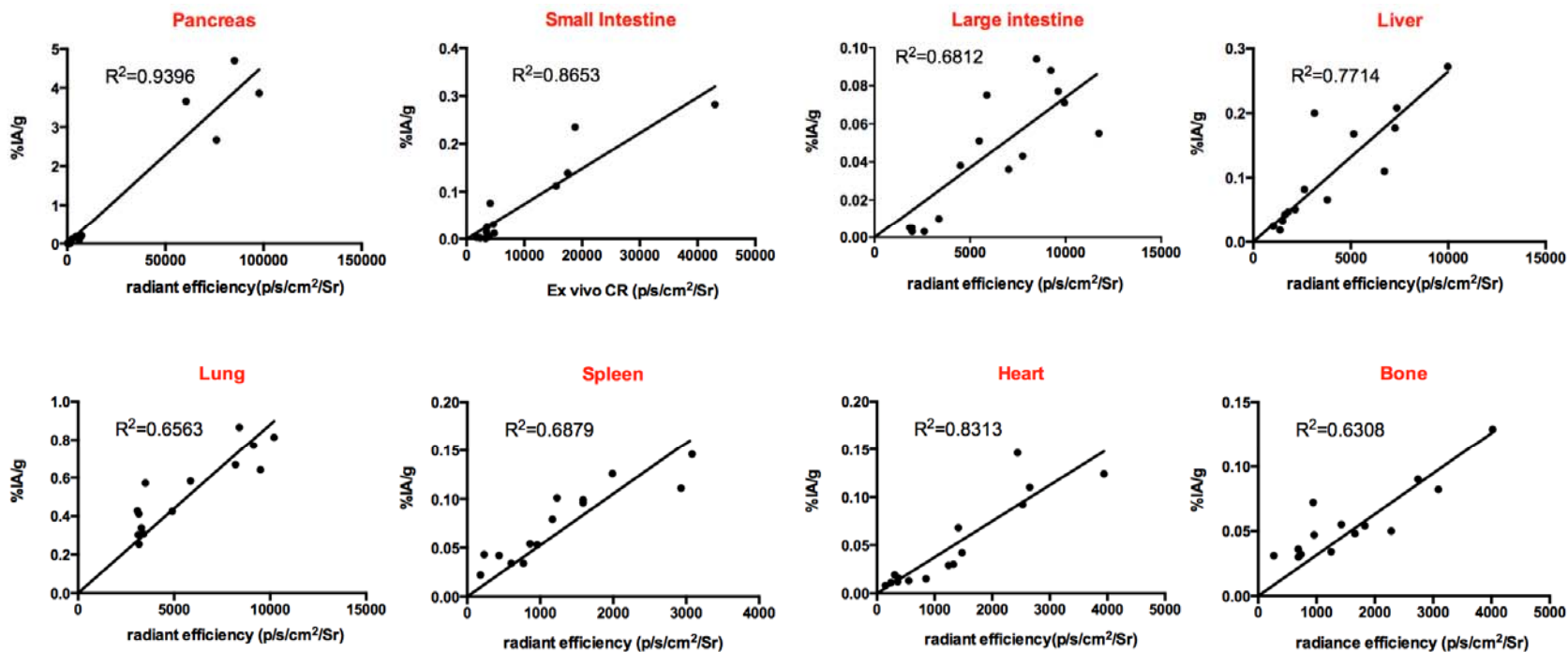


SUPPLEMENTAL TABLE 1. Biodistribution of ⁹⁰Y-DOTA-AR in nude mice bearing PC-3 tumors. Values are means ± SD %IA/g (n=15).

Organ	1h	4h	24h	48h
Tumor	3.62±0.95	2.92±0.57	0.45±0.04	0.10±0.05
Muscle	0.17±0.02	0.01±0.01	0.01±0.00	0.01±0.00
Small Intestine	0.19±0.08	0.19±0.03	0.01±0.01	0.01±0.00
Large Intestine	0.27±0.03	0.07±0.02	0.02±0.03	0.01±0.00
Pancreas	3.72±0.83	0.15±0.05	0.01±0.00	0.01±0.00
Liver	0.21±0.05	0.12± 0.06	0.04± 0.01	0.02±0.00
Heart	0.12±0.02	0.04± 0.02	0.02± 0.00	0.01±0.01
Lungs	0.83±0.05	0.62±0.05	0.39±0.06	0.30±0.04
Adrenals	0.41±0.13	0.22± 0.08	0.06±0.04	0.03± 0.00
Spleen	0.12±0.02	0.09± 0.01	0.05± 0.01	0.03±0.01
Bone	0.52±0.84	0.05± 0.00	0.04± 0.01	0.05±0.02
Kidney	1.76±0.61	0.78±0.14	0.17±0.02	0.07±0.01
Blood	0.11±0.04	0.03± 0.03	0.01±0.00	0.01±0.00
Tumor/blood ratio	32.92±6.30	173.17±38.25	77.52±9.4	33.48±17.78
Tumor/kidney	2.15±0.42	4.03±0.39	2.73±0.23	1.75±0.82
Tumor/liver ratio	17.60±2.97	36.50±15.57	10.69±2.75	4.84±3.02
Tumor/muscle ratio	99.26±46.10	252.27±104.52	98.73±26.56	36.34±19.52
Tumor/pancreas	1.00±0.32	17.53±1.24	43.40±11.69	14.34±3.03



SUPPLEMENTAL FIGURE 2.

Correlation of *ex vivo* Cerenkov radiance (p/s/cm²/sr) and %IA/g in healthy organs of PC-3 tumor-bearing mice.