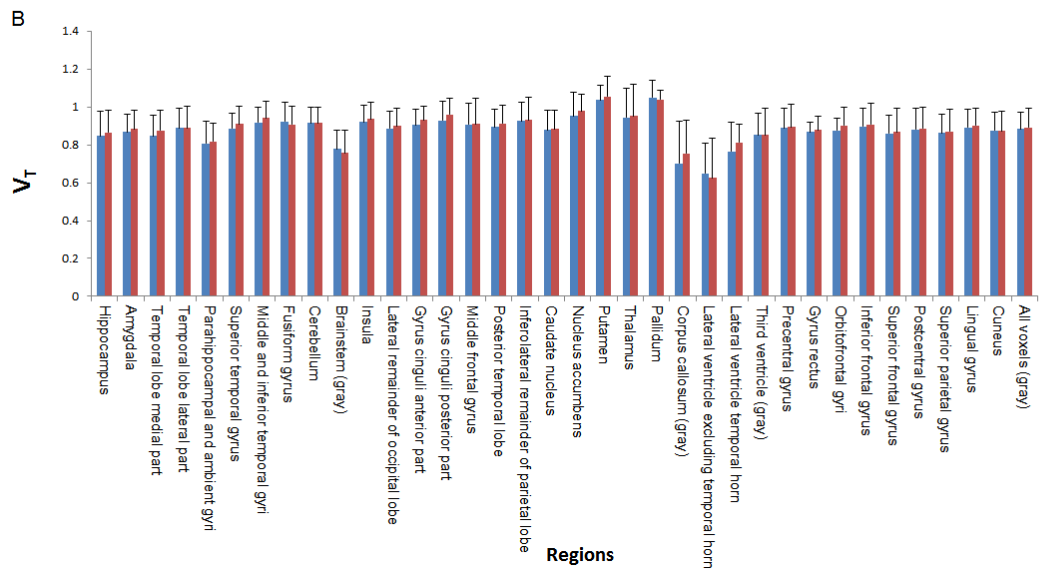
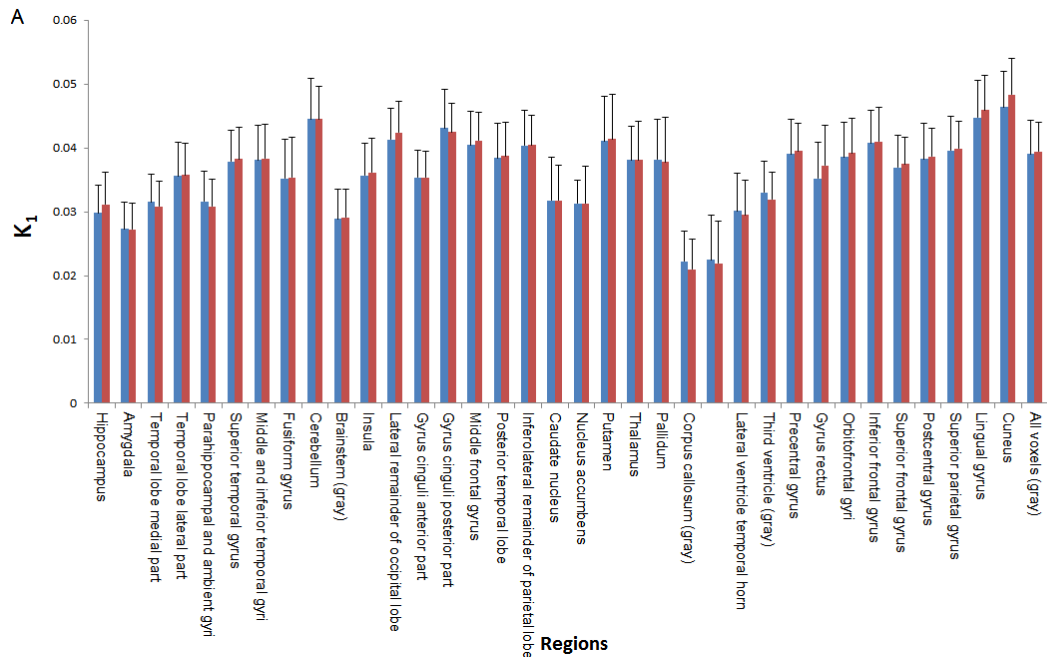
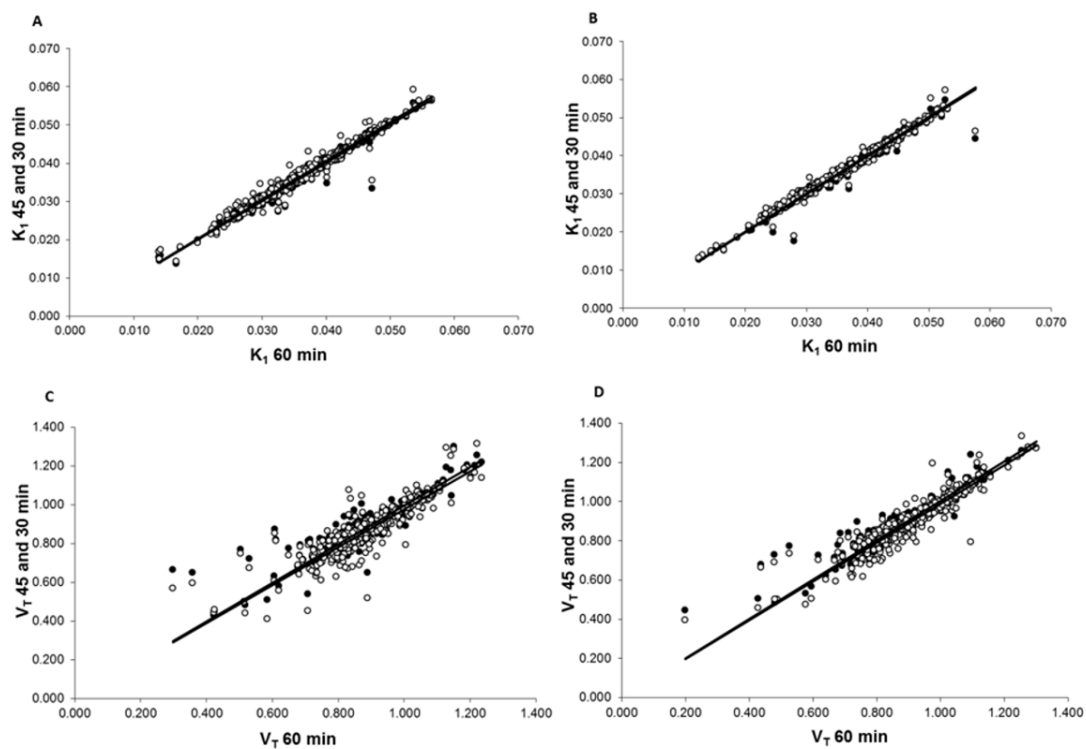


**Supplemental Figure 1.** The whole brain grey matter TAC with various model fits. (A) and (B) consist of the data from 1TC2k and 1TC2k +  $V_b$  model, (C) and (D) from 2TC3k and 2TC3k +  $V_b$  while (E) and (F) are the data from 2T4k and 2T4k +  $V_b$  respectively. The red dot represents the measured data while the blue line represents the fitted value to the data.



**Supplemental Figure 2.** The bar charts show the  $K_1$  (A) and  $V_T$  (B) values of various regions across the brain. The blue bar and red bar corresponding to test and retest data respectively.



**Supplemental Figure 3.** Correlation between shorter (30 and 45 minutes) and full (60 minutes) scan durations for **A)**  $K_1$  test, **B)**  $K_1$  retest, **C)**  $V_T$  test and **D)**  $V_T$  retest data. The (●) represent 45 min scan duration data while (○) represent 30 min of scan duration data.