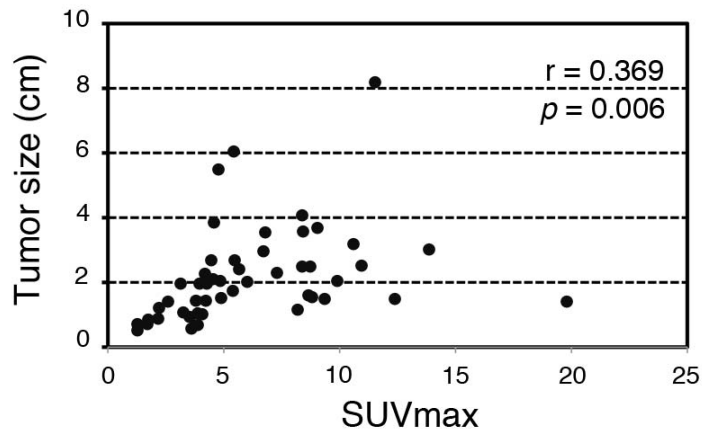
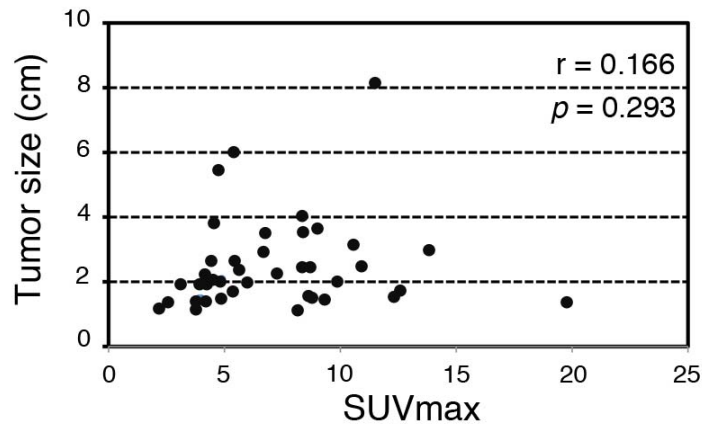


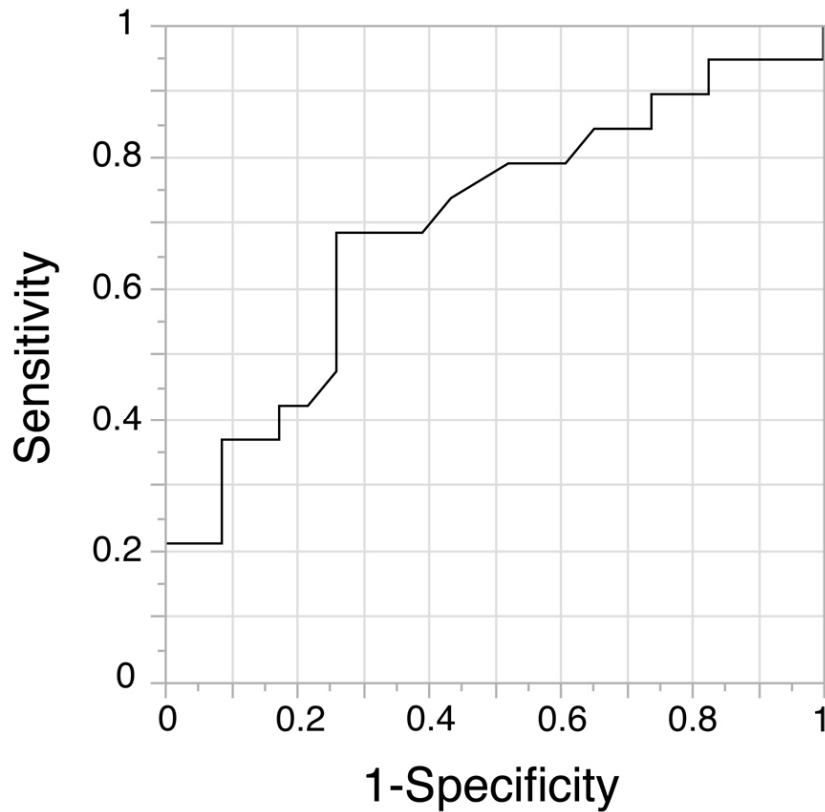
A)



B)



Supplemental Figure 1. A) Scatter plot of tumor size and ^{18}F -FDG accumulation with all liver tumors ($n = 55$). SUVmax was significantly correlated with tumor size ($r = 0.369$, $P = 0.006$). B) Scatter plot of tumor size and ^{18}F -FDG accumulation with liver tumors larger than 10mm ($n = 42$). SUVmax was not significantly correlated with tumor size ($r = 0.166$, $P = 0.293$). The relationship between variables was determined by Pearson's correlation coefficient.



Supplemental Figure 2. The receiver operating characteristics curve of SUVmax. The area under the curve was 0.70. A cutoff value of SUVmax of 6.0 showed a sensitivity of 68% and a specificity of 74% for the prediction of *KRAS* mutations.