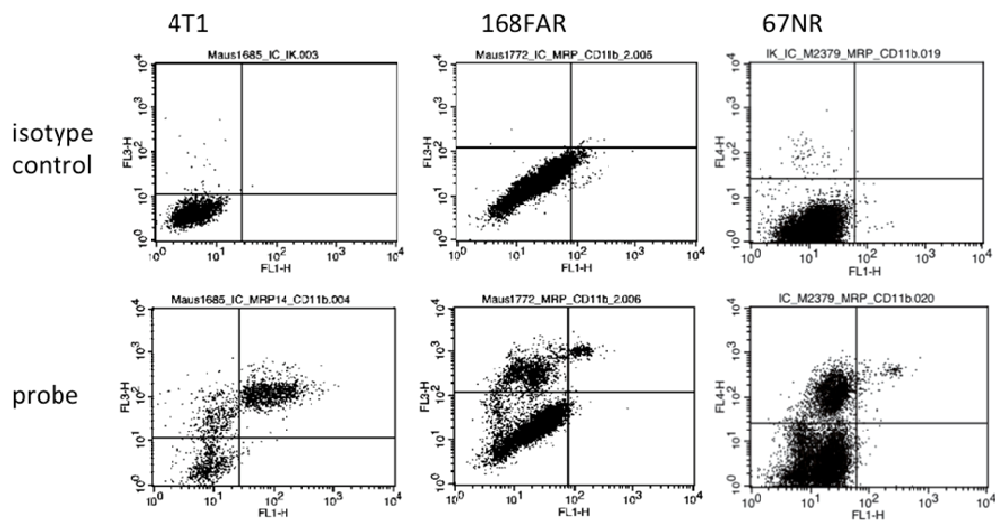


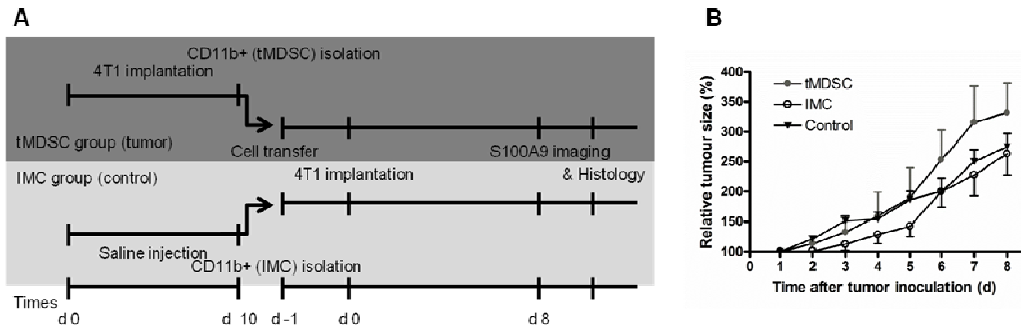
**SUPPLEMENTAL FIGURE 1 – Biodistribution**

24 h after application of aS100A9-Cy5.5 (black bars) or IgG-Cy5.5 (white) and in vivo imaging, organs were resected and separately scanned (A). Tracer accumulation in the resected tumor is separately depicted in B.



### SUPPLEMENTAL FIGURE 2 – FACS gating strategy

The different cellular morphology of the three tumor cell lines required an individual isotype control for specific staining. The plots in this figure highlight the strategy to set the FACS gating according to the individual unspecific background counts.



**SUPPLEMENTAL FIGURE 3 – Experimental scheme of tMDSC/IMC transfer**

The experimental scheme and time frame for splenic cell transfer is depicted in A. The resulting growth per day for tMDSC treated animals and controls (IMC treated and untreated) are shown in B.