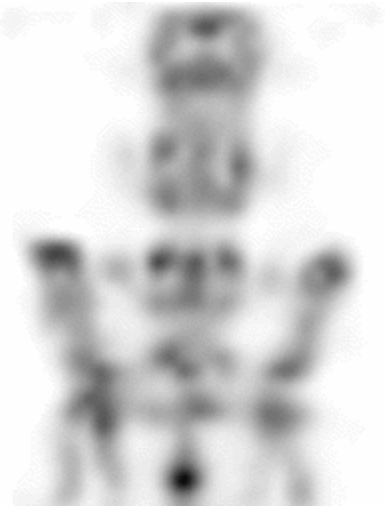


Supplemental Figure 1.

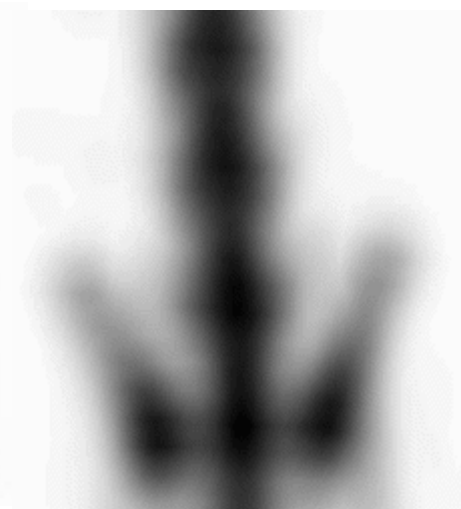
Images of ^{18}F in a syringe. Two slices are shown in each case, individually scaled using a linear grey-scale. Data are from A) VECTor with 1.2 mm post-reconstruction smoothing, B) Focus120 using 3DMAP ($\beta=0.03$), and C) Focus120 using FORE + FBP.



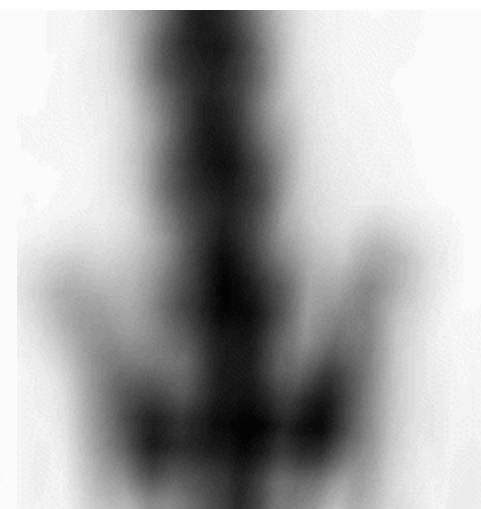
**VECTor
(0.25 mm smooth)**



**Focus120
(3D MAP, $\beta = 0$)**



**Focus120
(3D MAP, $\beta = 1.98$)**



**Focus120
(FORE + FBP)**

Supplemental Figure 2.