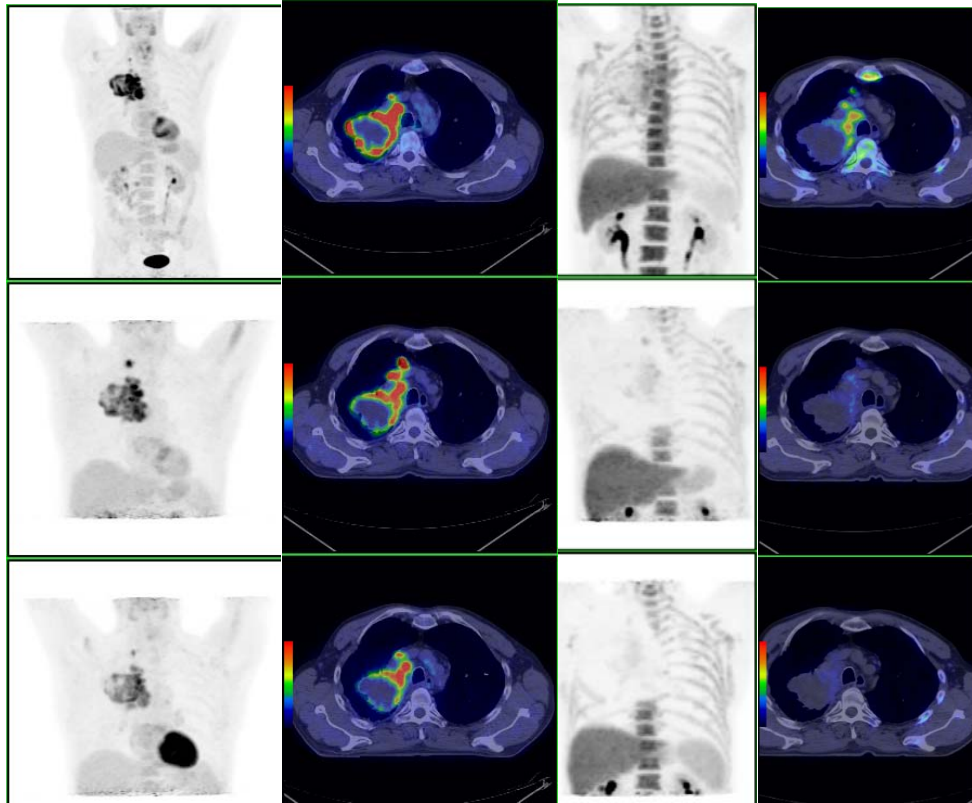


Supplemental Figure 3: Patient eligible for radical chemo-RT based on conventional staging, including FDG_0 (excluding the cranium). Cerebral metastases were detected on baseline FLT_0 , and confirmed independently on contrast-enhanced CT, changing the management to palliative.



Supplemental Figure 4: Patient with T3N3M0 large cell carcinoma. PMR and PPR were reported at week 2, which continued at week 4. From left: Coronal FDG PET, Transverse FDG PET/CT, Coronal FLT PET, Transverse FLT PET/CT. Top row: baseline Middle row: week two Bottom row: week four.