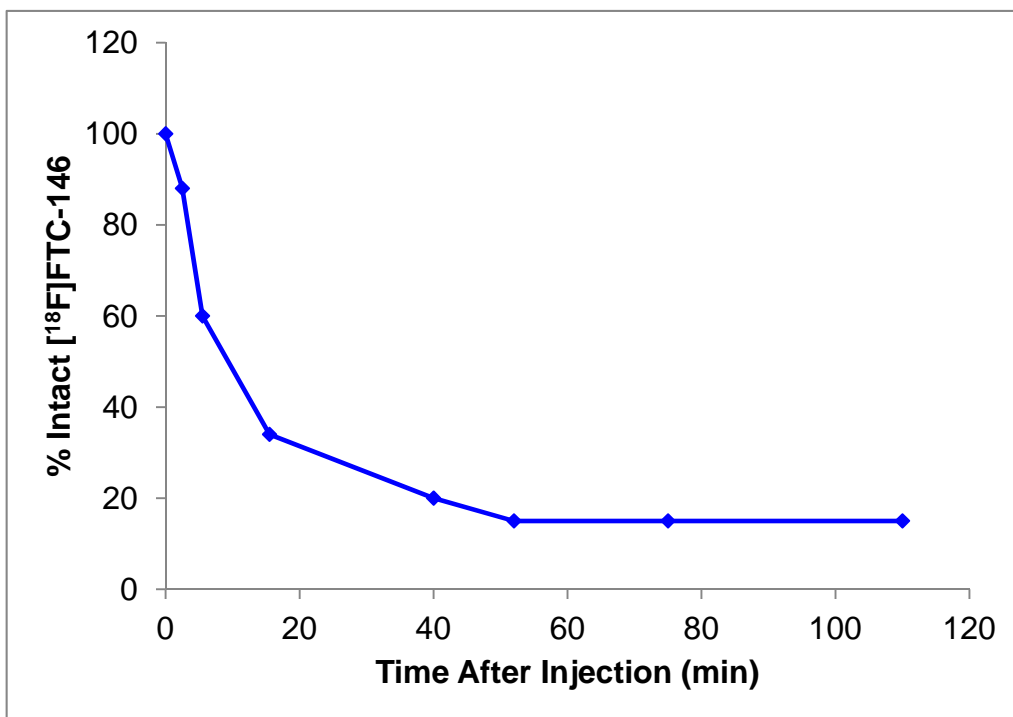


SUPPLEMENTAL DATA

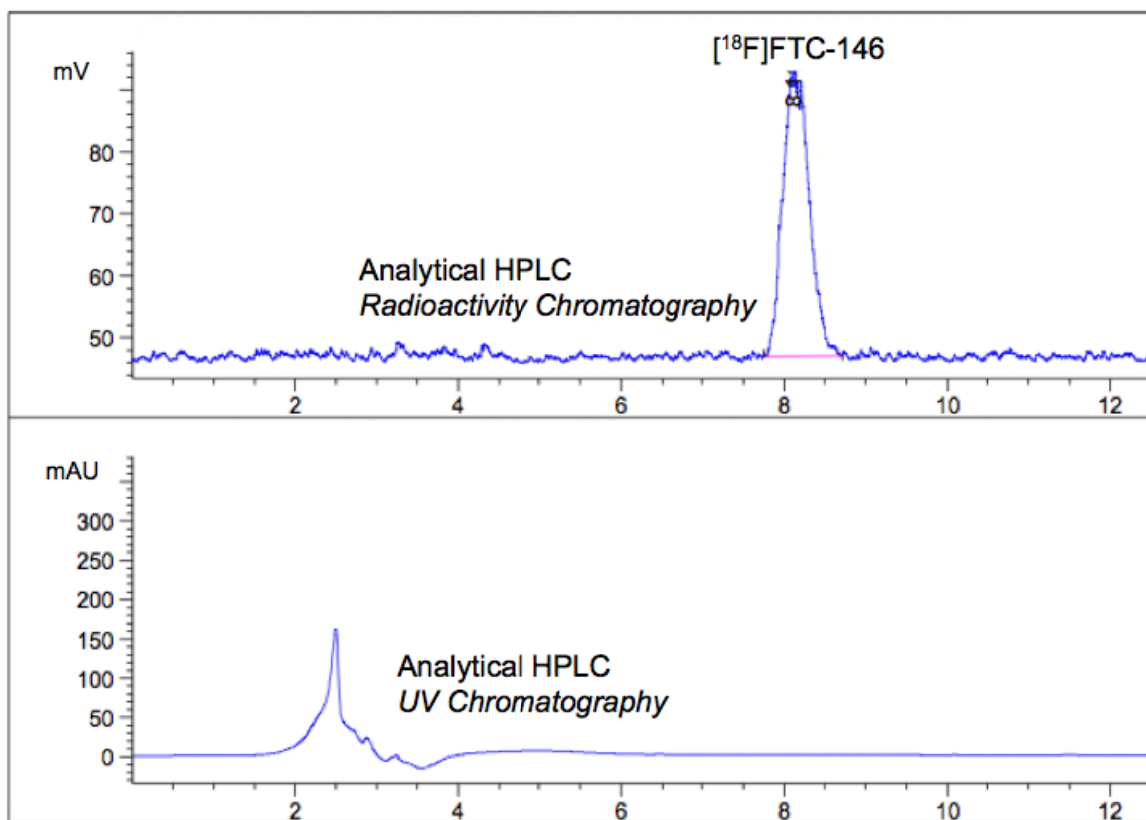
SUPPLEMENTAL TABLE 1. [¹⁸F]FTC-146 brain-to-skull ratios 60 min after radiotracer injection.

Species/strain	Brain-to-skull ratio (Biodistribution data)	Brain-to-skull ratio (PET data)
Mouse – <i>Balb/c</i>	1.2 ± 0.1 <i>n</i> = 3	1.0 ± 0.1 <i>n</i> = 3
Rat – <i>Sprague Dawley</i>	2.6 ± 0.4 <i>n</i> = 4	3.1 ± 0.2 <i>n</i> = 3
Non-human primate – <i>Squirrel Monkey</i>	N/A	1.2 ± 0.1 <i>n</i> = 2

Errors are expressed as standard error of the mean (SEM). N/A = not applicable.



SUPPLEMENTAL FIGURE 1. *In vivo* stability of [¹⁸F]FTC-146 in monkey plasma. The graph represents the percentage of intact (unmetabolized) [¹⁸F]FTC-146 over time.



SUPPLEMENTAL FIGURE 2. HPLC chromatograms of radioactive (top) and UV-active (bottom) compounds in human serum after 120 min incubation of $[^{18}\text{F}]\text{FTC-146}$ at 37 °C.