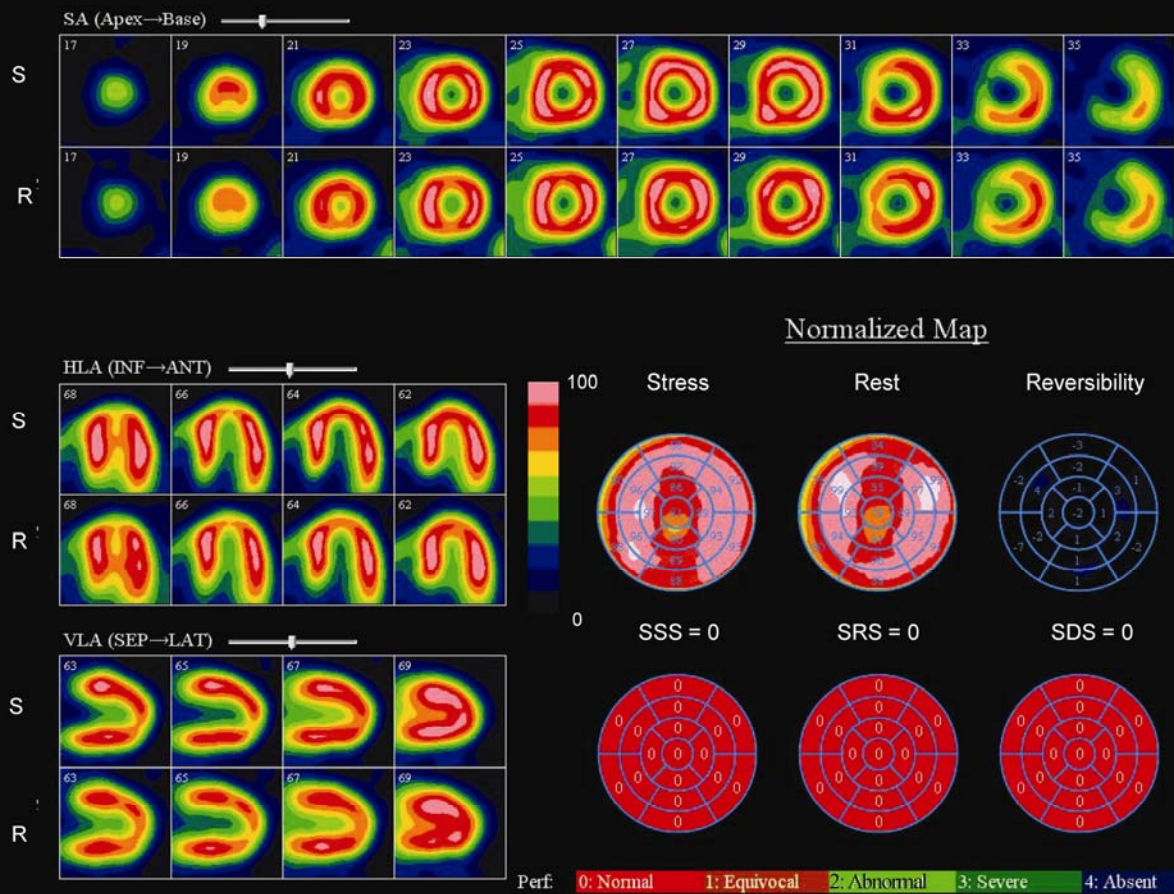
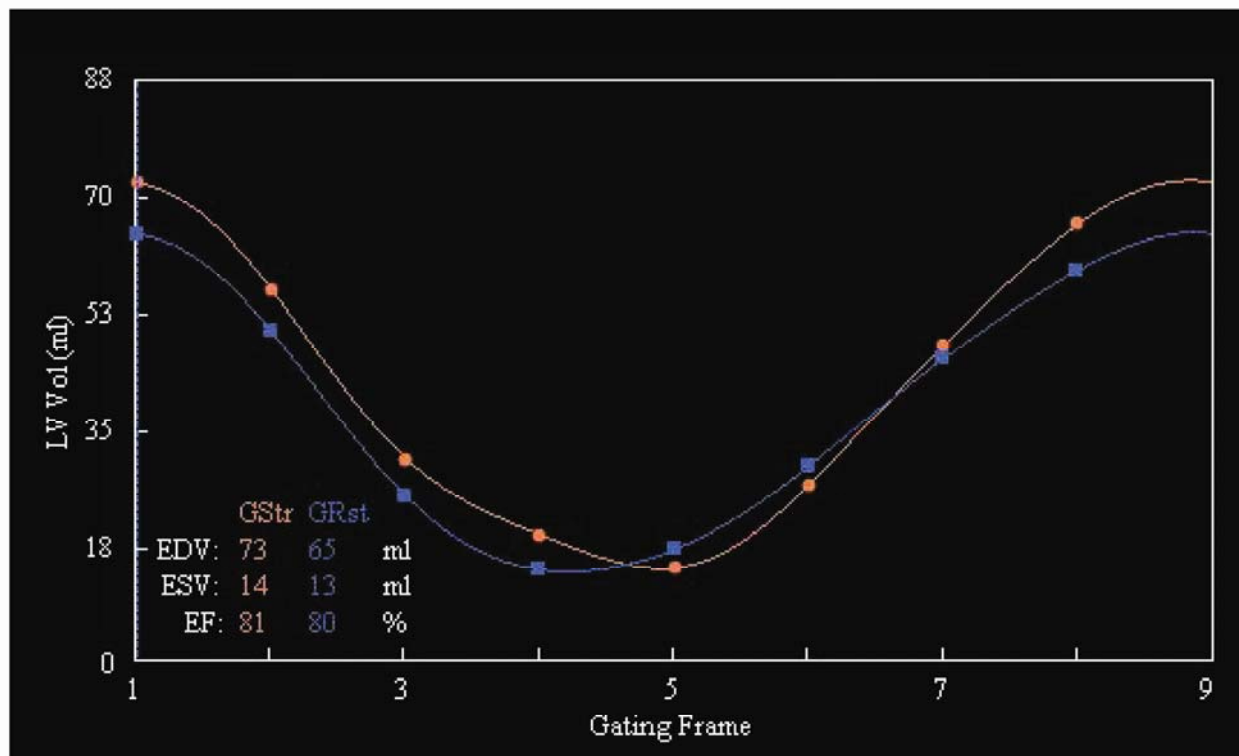


A



B

Supplemental FIGURE 1: Very good quality ^{82}Rb PET images obtained in an obese 50-year-old female patient with BMI = 60 (height: 153cm, weight: 140kg) on the D690 PET-CT system using injected dose of 1410 MBq at rest and stress. Patient had a history of hypertension, diabetes and obesity, and underwent MPI for preoperative evaluation for a duodenal switch. (A) Perfusion images scored clinically as: SSS = SRS = SDS = 0, indicating normal perfusion; consistent with other reported findings of normal LV size, (B) normal ejection fraction and wall motion on ECG-gated images, no chest pain and no ischemic ST segment changes on ECG. S = stress, R = rest.

Supplemental Table 1. Patient Demographics by Site

Description	Site 1	Site 2	Site 3	Site 4	Site 5	Site 6	Site 7	Site 1-TI	Site 2-Tc
Male Gender	72%	68%	40%	64%	24%	76%	50%	60%	56%
Age	60 ± 12	67 ± 12	63 ± 12	66 ± 11	65 ± 11	66 ± 9	67 ± 12	64 ± 12	66 ± 9
BMI	32 ± 8	31 ± 8	29 ± 5	31 ± 6	31 ± 8	29 ± 5	29 ± 5	27 ± 4	31 ± 6
Diabetes	24%	36%	48%	36%	24%	48%	33%	20%	40%
Smoker*	84%	76%	48%	72%	56%	48%	54%	52%	80%
Hypertension	80%	68%	76%	68%	64%	64%	58%	60%	76%
Dyslipidemia	84%	92%	88%	80%	60%	72%	79%	72%	80%
Family history	56%	96%	20%	28%	52%	28%	42%	28%	72%
Typical angina	36%	28%	8%	28%	20%	8%	17%	4%	20%
Previous MI	44%	44%	8%	20%	16%	28%	33%	24%	28%
Previous PCI	48%	36%	8%	32%	4%	24%	29%	24%	32%

BMI = body mass index; *Past or current