

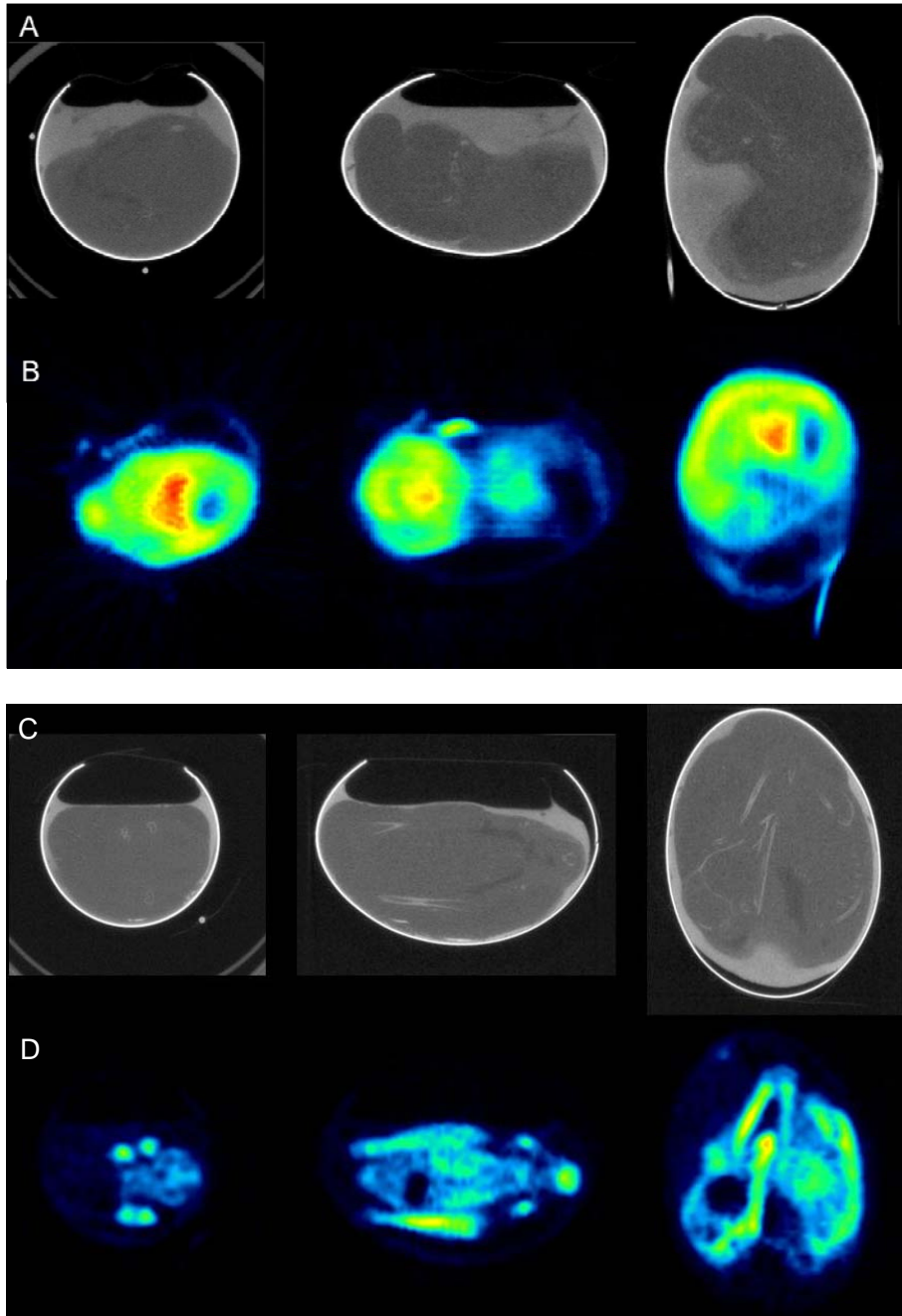
Supplemental Figure 1: Histological section of typical U87 glioblastoma after dissection from CAM.



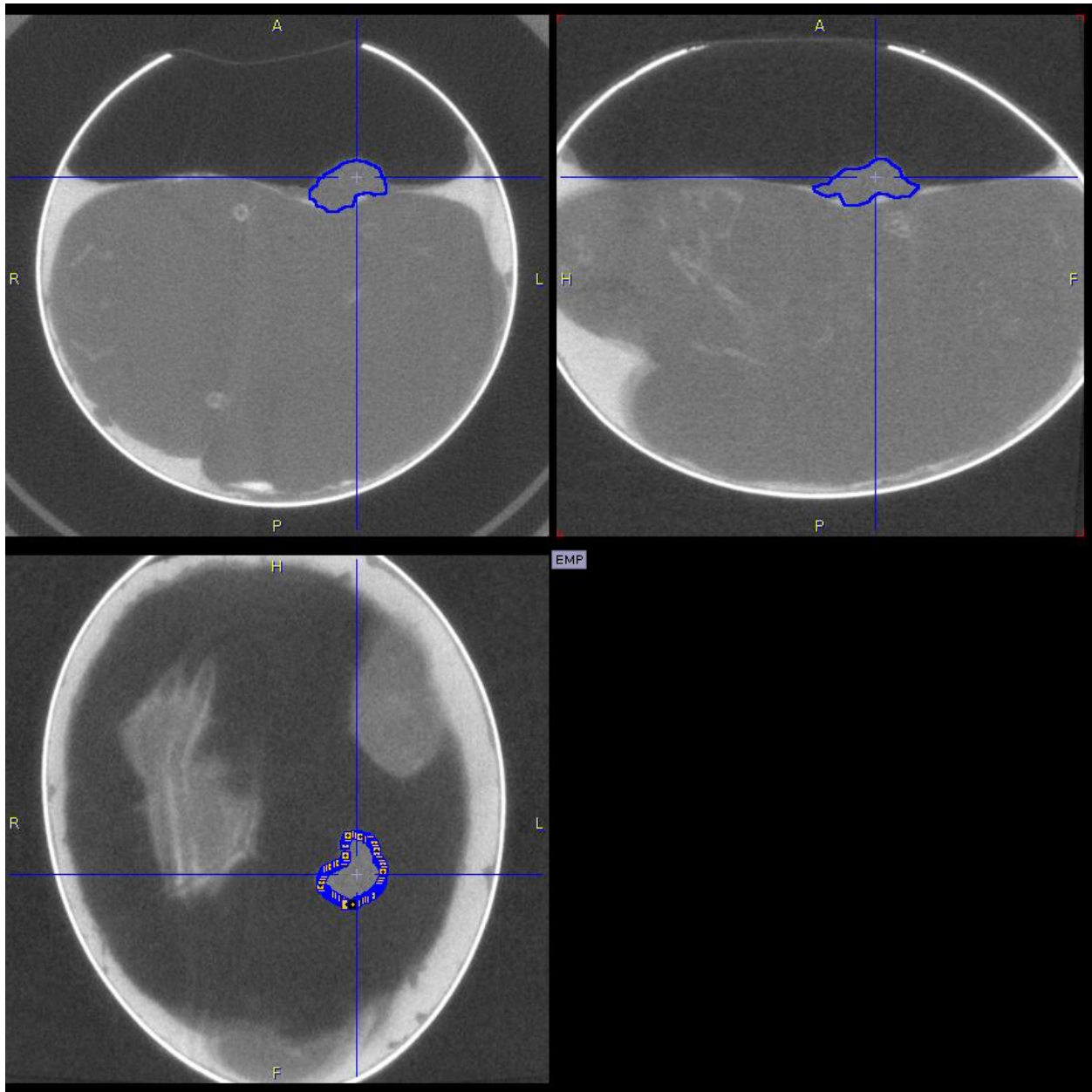
Supplemental Figure 2: Photograph illustrating catheterized CAM vessel for tracer injection during dynamic PET scanning.



Supplemental Figure 3: Photograph showing the catheterized egg in the Minerve anesthesia cell, held in position using protective foam packaging. The catheter was routed through the open end of the cell cover and an airtight seal fashioned using plastic film.



Supplemental Figure 4: Example of imaging data from [^{18}F]TYR dynamic scan without (A, B) and with (C, D) effective anesthesia (most likely due to insufficient induction time). (A) CT data showing motion artifacts and loss of contrast between bone and surrounding soft tissue; (B) blurring in PET data; (C) Bone/beak structures clearly visible in CT with effective anesthesia; (D) absence of blurring in PET data with effective anesthesia. Note – tumor not clearly visible in these images due to image plane selection.



Supplemental Figure 5: 2D slice of CT image illustrating delineation of tumor outline after manual seeding and resulting volume generation.