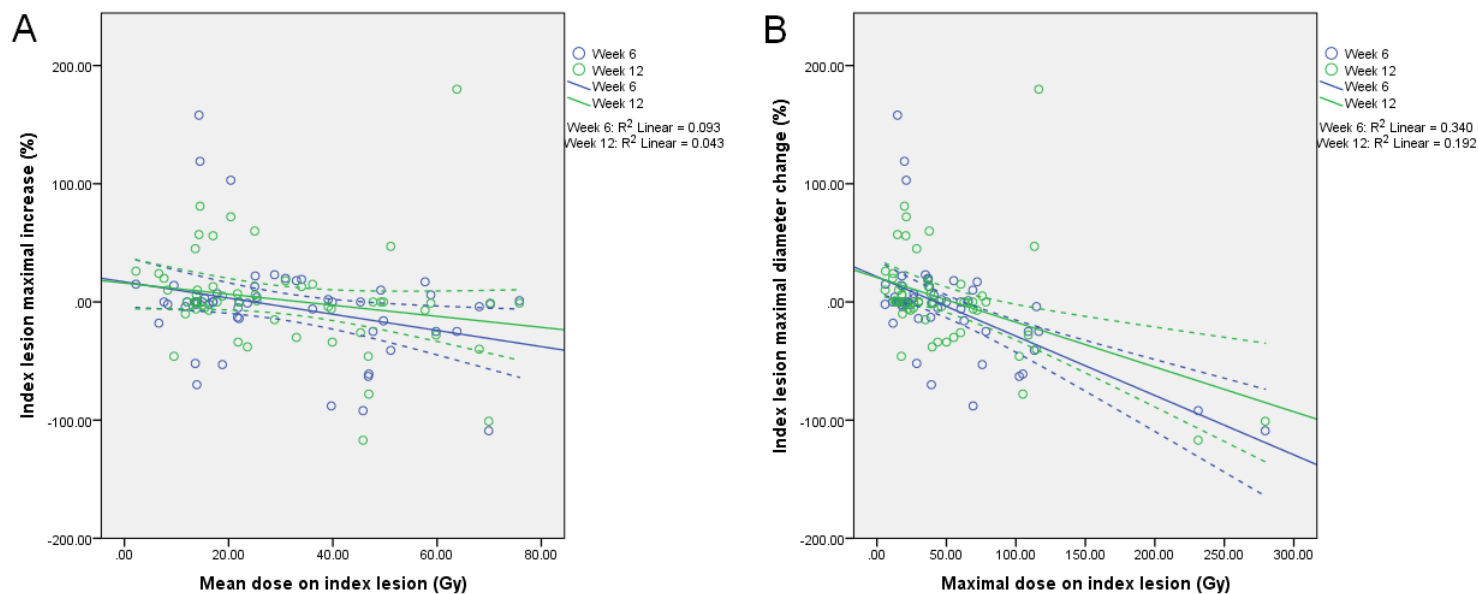


Supplemental Figure 1. Activity recovery curves for the 2 used SPECT systems (Symbia and Forte). The activity recovery coefficient (ARC) per volume of interest (VOI) increases with the volume of the VOI.



Supplemental Figure 2. Dose response analysis. The mean (A) and maximal (B) dose on all index lesions (up to 5 per patient) was plotted against the change in maximal diameter of the index lesions at 6-wk and 12-wk follow-up. Maximal diameters were measured on CT according to RECIST 1.1, and dose was measured with SPECT. There is a weak correlation between dose and change in tumor diameter.