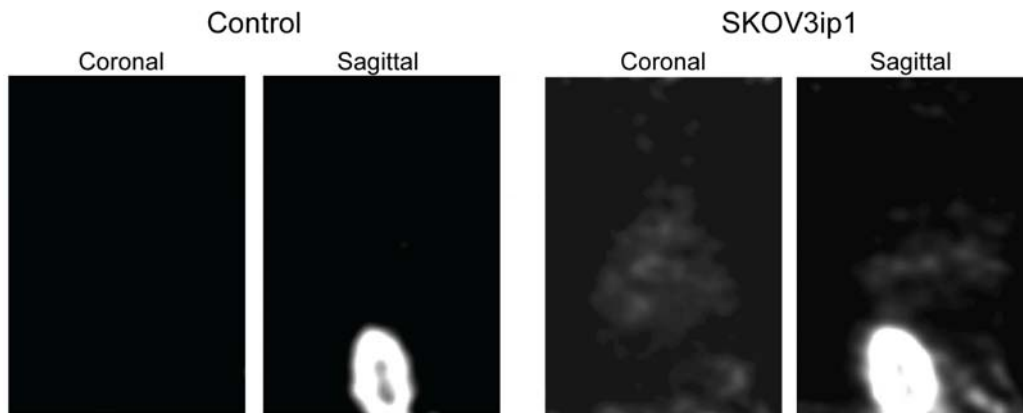


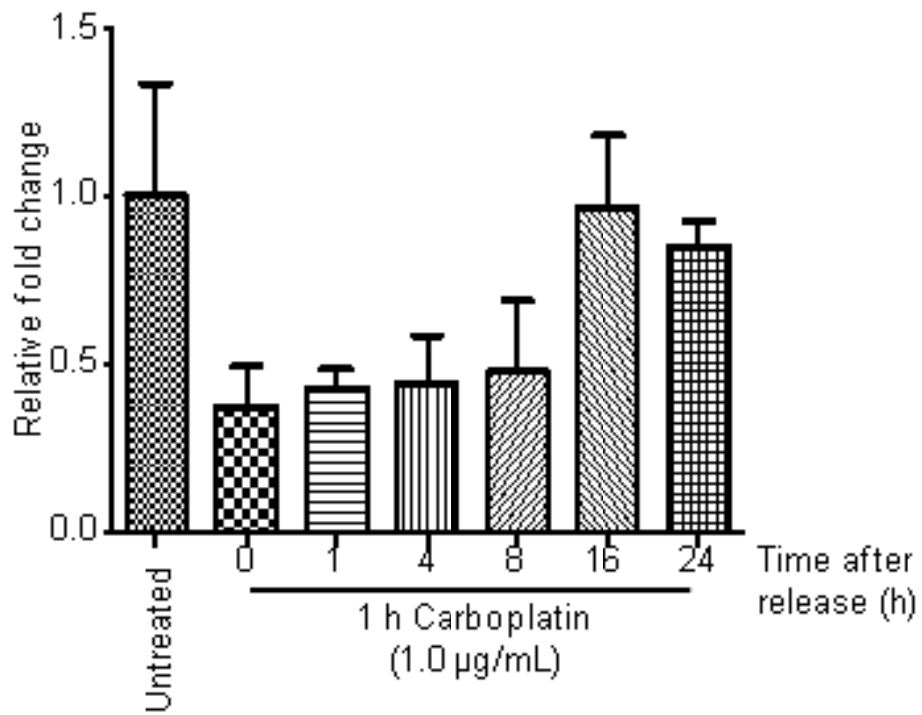
SUPPLEMENTAL DATA

**Supplemental Table 1. Tissue biodistribution of ^{111}In -tVCAM-4 in nude mice
4 hours after probe injection.**

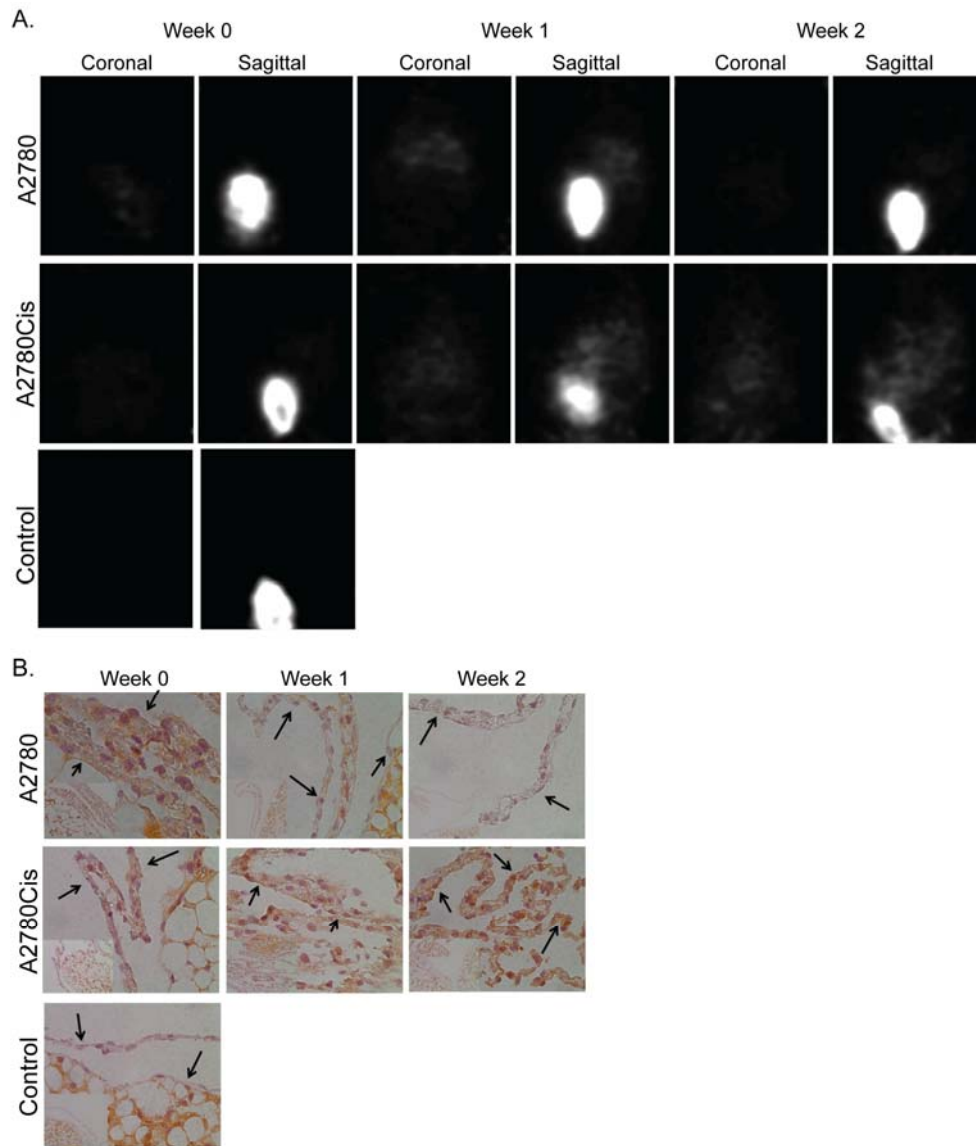
Tissue	Mean (% dose injected/g)	Std Dev
Kidney	44.24	12.62
Liver	0.68	0.06
Pancreas	0.74	0.23
Spleen	0.41	0.08
Lung	0.38	0.03
Heart	0.22	0.04



Supplemental Figure 1. SPECT images of ^{111}In -tVCAM-4 peptide 4 hours after IP injection into saline control injected (Control) or tumor-bearing (SKOV3ip1) animals. Representative coronal and sagittal sections taken from the same plane of each animal are displayed.



Supplemental Figure 2. LP9 cells treated as for Figure 3B were subjected to qRT-PCR for VCAM-1 and GUSB (housekeeping control). Data represent the $\Delta\Delta C_t$ values for each point normalized to the untreated control.



Supplemental Figure 3. (A) SPECT/CT images were collected weekly starting 1 week after tumor initiation (week 0) as described in Figure 4A; weeks 0, 1 and 2 indicate time after carboplatin treatment. Representative coronal and sagittal SPECT images (same plane for each animal) of ^{111}In -tVCAM-4 peptide obtained 4 hours after IP injection are depicted. **(B)** Correlative histology demonstrating

VCAM-1 expression on the mesothelium (arrows). At week 0, A2780 and A2780Cis show similar VCAM-1 reactivity; weeks 1 and 2 show increased VCAM-1 reactivity in mice containing A2780Cis cells compared to those with A2780 cells. Note the lack of reactivity in the control slide obtained from a mouse without tumor cells. 60X images with 20X insets.