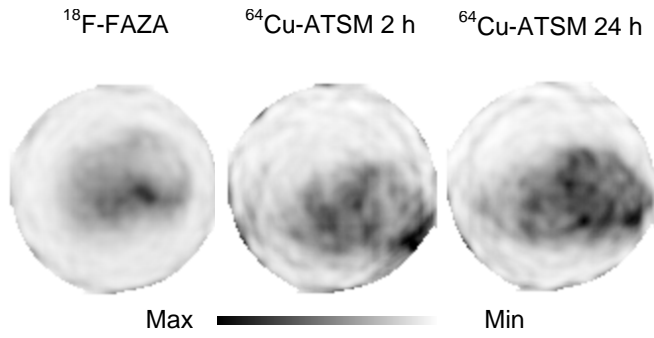
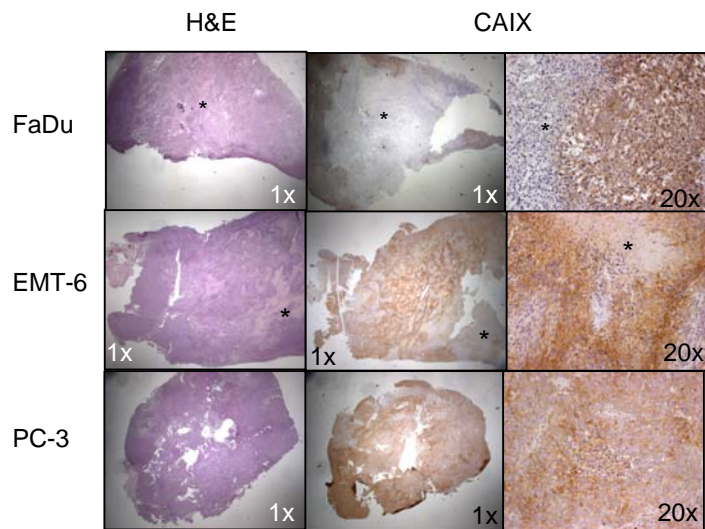


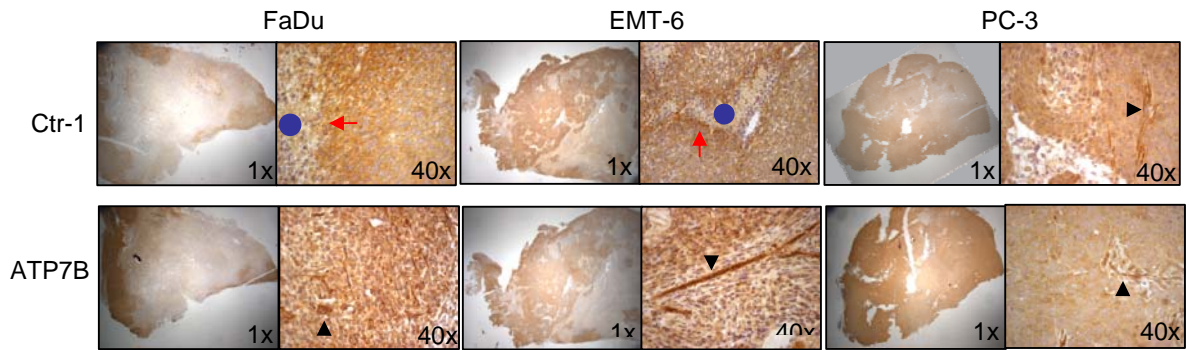
SUPPLEMENTAL FIGURE 1. Dual autoradiography studies. Representative images of dual autoradiography obtained after injection of [^{18}F]FAZA and [^{64}Cu]ATSM in the same mouse. In FaDu autoradiography images, it is possible to observe the same distribution.



SUPPLEMENTAL FIGURE 2. [^{18}F]FAZA and [^{64}Cu]ATSM comparison in FaDu model. Representative axial PET images from [^{18}F]FAZA, [^{64}Cu]ATSM at 2 and 24 h post injection in the same mouse.



SUPPLEMENTAL FIGURE 3. H&E staining at 1x magnification and CAIX immunostaining sections at 1x and 20x magnification. In FaDu and EMT-6 tumors, a wide necrotic area is shown (asterisks) and CAIX expression corresponds to [¹⁸F]FAZA distribution. In PC-3 lesion, multiple scattered necrotic and hypoxic foci are observed in the tumor mass in a geographic pattern (clear areas in H&E).



SUPPLEMENTAL FIGURE 4. Immunolocalization of copper pumps. Expression of Ctr-1 and ATP7B in FaDu, EMT-6 and PC-3 tumors of mice undergoing PET imaging. Blue dots indicate necrosis and red arrows indicate stronger immunostained peri-necrotic areas. In PC-3, copper pumps were homogenously distributed within all mass. Black arrows indicate the presence of ATP7B in neoplastic vessels.