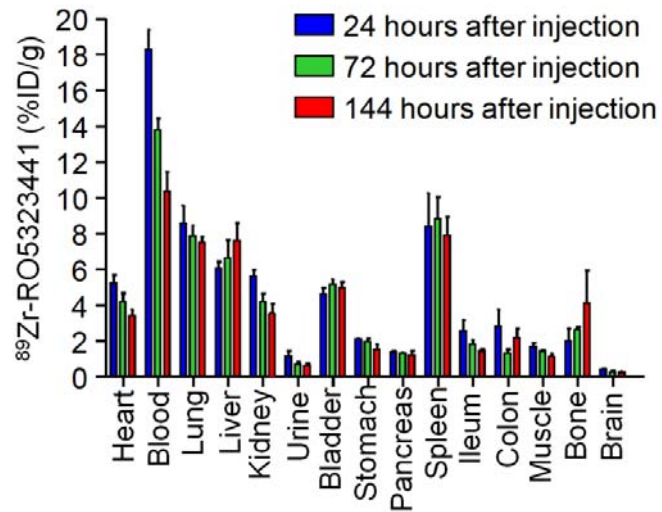
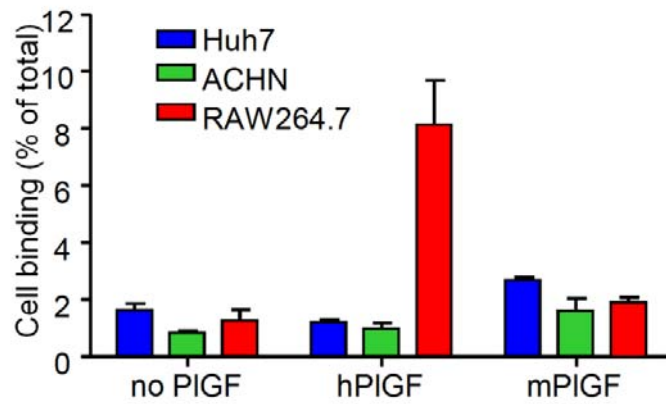


**SUPPLEMENTAL FIGURE 1:** Quality control of  $^{89}\text{Zr}$ -RO5323441. Typical SE-HPLC result of  $^{89}\text{Zr}$ -RO5323441 with detection at 280 nm for the protein signal (A; upper panel) and co-registration of radioactive signal (A; lower panel). Immunoreactivity of  $^{89}\text{Zr}$ -RO5323441 was determined in a competition binding assay with unlabeled RO5323441 (RO5323441). Competition curve (with 95% confidence interval) for the binding of  $^{89}\text{Zr}$ -RO5323441 to PIGF-1 is shown in panel B.



**SUPPLEMENTAL FIGURE 2:**  $^{89}\text{Zr}$ -RO5323441 biodistribution in non-tumor bearing mice at 24, 72 and 144 h post-injection.



**SUPPLEMENTAL FIGURE 3:**  $^{89}\text{Zr}$ -RO5323441 binding to RAW264.7 macrophages and Huh7 and ACHN tumor cells after 24 h incubation with 10-fold molar excess of human PIGF (hPIGF) or murine PIGF (mPIGF).