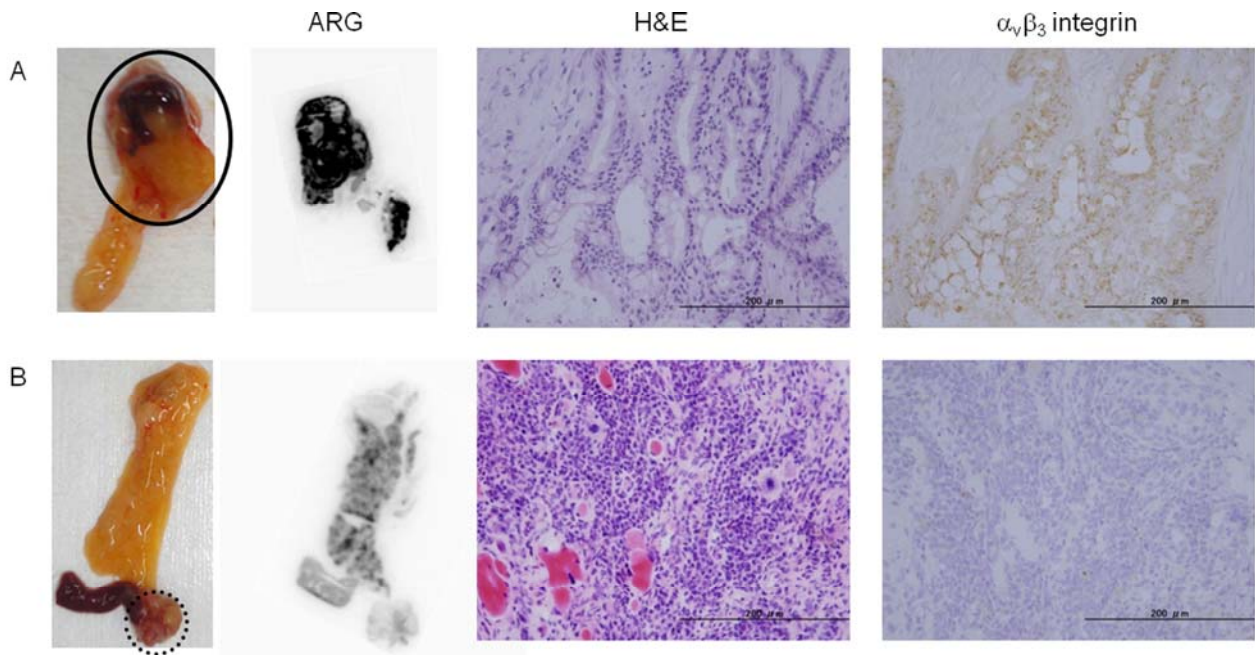


**Supplemental Figure 1.** *Ex vivo* autoradiography of pancreatic gastric lobe in hamster 6. High accumulation of  $^{111}\text{In-DOTA-c(RGDfK)}$  was found in tumor tissue as shown in Fig. 1A (red circle). The adjacent sections were stained with H&E (B) and anti- $\alpha_v\beta_3$  integrin antibody (C). Significant expression of  $\alpha_v\beta_3$  integrin was found in the high accumulation region of  $^{111}\text{In-DOTA-c(RGDfK)}$ .



**Supplemental Figure 2.** *Ex vivo* autoradiography and histopathological analyses in hamster 10. Pancreatic tumor in the pancreatic head (A; circle) and purulent inflammatory region in the splenic lobe (B; dotted circle). High accumulation of  $^{111}\text{In-DOTA-c(RGDfK)}$  was found in tumor, but not in inflammatory region by ARG. Sections of a carcinoma and a purulent inflammatory region were stained with H&E and anti- $\alpha_v\beta_3$  integrin antibody. There was no expression of  $\alpha_v\beta_3$  integrin in the inflammatory lesions according to this accumulation pattern.

Supplemental Table 1. Characteristics of hamsters used in this experiment

Hamster	Weeks after BOP treatment	Tumor stage	Tumor size
1	16 weeks	N. D.	
2	16 weeks	N. D.	
3	18 weeks	Atypical Hyperplasia	1.5 mm
4	20 weeks	Adenocarcinoma	2.0 mm
5	22 weeks	Adenocarcinoma	3.0 mm
		Adenocarcinoma	4.4 mm
6	23 weeks	Adenocarcinoma	3.0 mm
		Adenocarcinoma	5.0 mm
7	23 weeks	Adenocarcinoma	2.0 mm
		Atypical Hyperplasia	0.7 mm
8	26 weeks	N. D.	
9	34 weeks	Adenocarcinoma	3.5 mm
		Adenocarcinoma	5.0 mm
		Atypical Hyperplasia	0.8 mm
		Atypical Hyperplasia	1.3 mm
10	45 weeks	Adenocarcinoma	8.0 mm
		Atypical Hyperplasia	0.9 mm

N. D. = not detected.