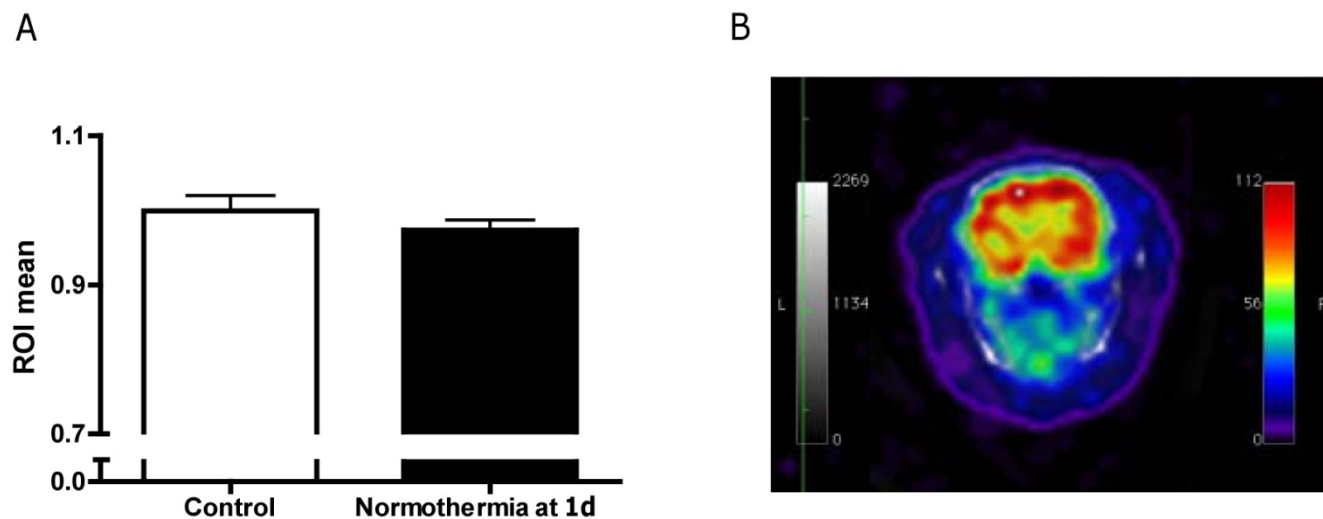


Supplemental figure:



Supplemental Figure 1: A shows the graphic presentation of the differences in radioactive uptake in the striatum of normothermic rats between the control images (-5 days) and the ones obtained 1 day after the insult. B shows the lower ^{99m}Tc -HMPAO uptake in the striatum, compared to the cortex. The results suggest that the perfusion in the striatum is too low to show significant differences in radioactive uptake, as observed by a paired t-test. (ROI = region of interest).