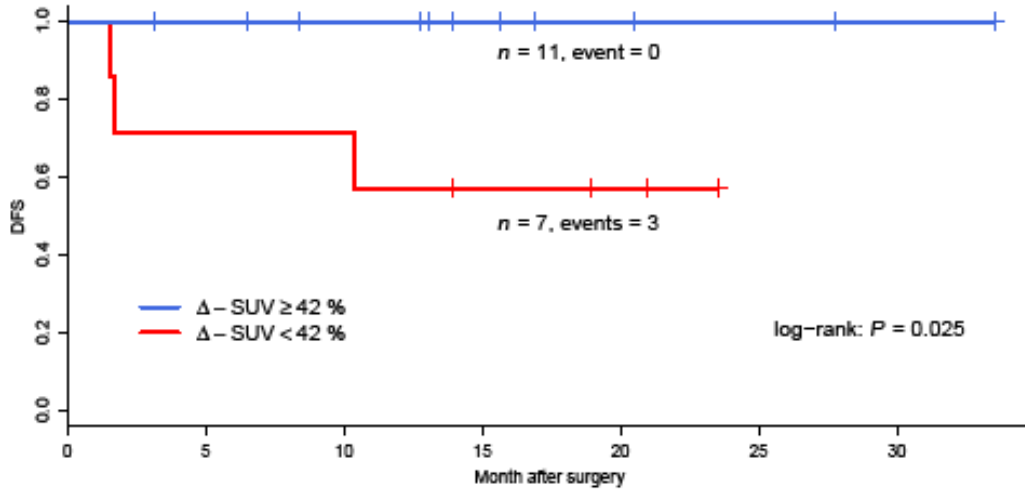


**SUPPLEMENTAL FIGURE 1.** Example of a patient having a low initial FDG uptake (patient #8; Table-2). The triple-negative tumor was an invasive ductal carcinoma, grade 2, of the left breast (stage IIA). Transaxial CT and fused PET/CT images of the primary tumor at baseline (A, B). Corresponding images after 2 courses of neoadjuvant chemotherapy (C, D). SUVmax was 1.5 at baseline and 1.1 after 2 courses of chemotherapy ( $\Delta$ SUV = -27%). At completion of chemotherapy (after 2 additional courses of EC and 4 courses of T), breast conserving surgery shows residual tumor (non pCR).



**SUPPLEMENTAL FIGURE 2.** Kaplan-Meier disease-free survival curves for metabolic responders ( $\geq$ 42% decrease) and metabolic non-responders ( $<$ 42% decrease). For this analysis, two patients with low SUVmax at baseline (patients#8 and #15) were excluded. DFS: Disease-Free Survival.