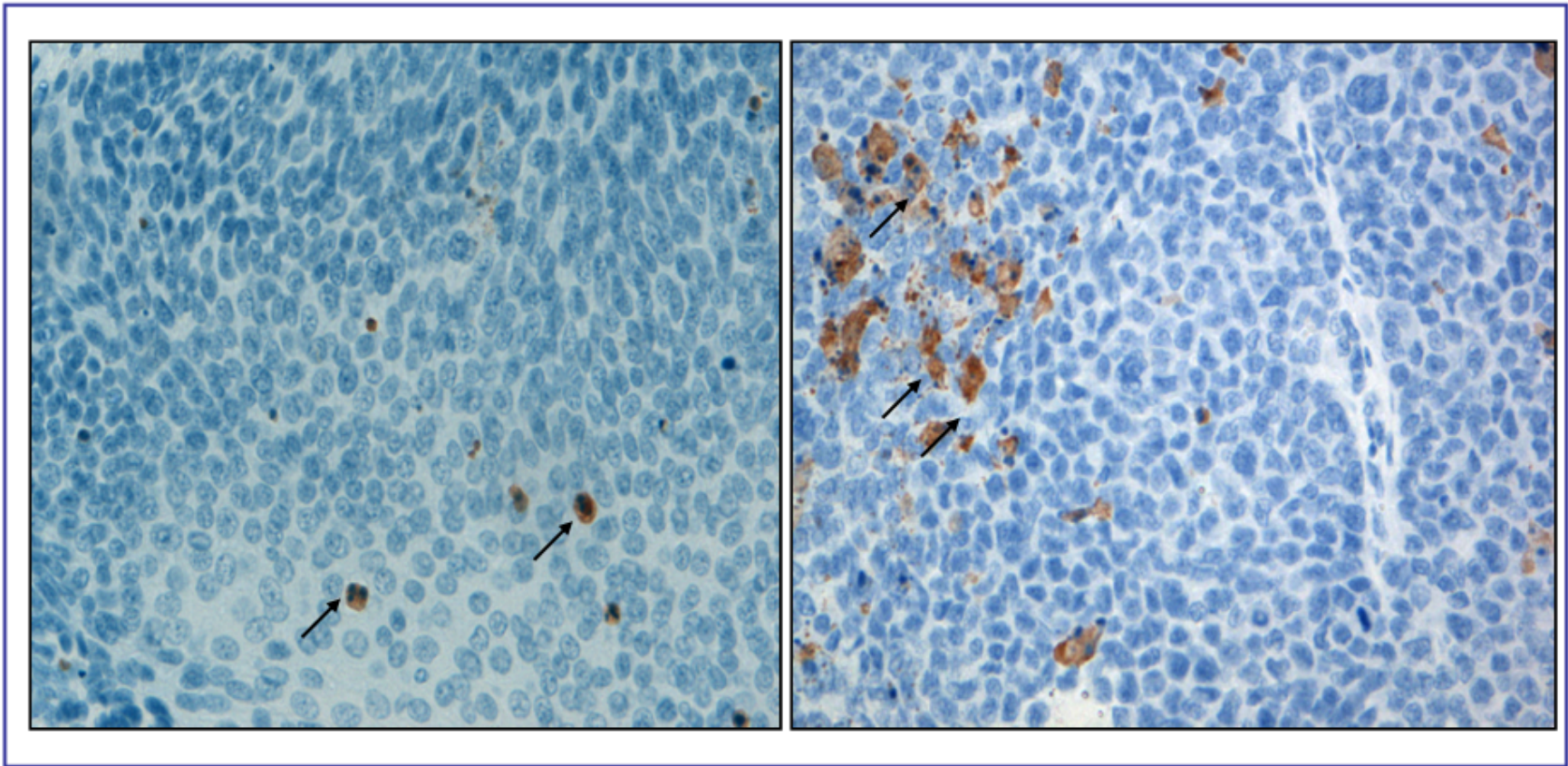


**FIGURE 1** Representative photomicrographs of A) and B) von Willebrand Factor staining (200x), C) and D) alpha-smooth muscle actin staining (200x), E) Masson's Trichrome staining with a bloodvessel surrounded by collagen which colours blue (indicated by an arrow, 400x) and F) Masson's Trichrome staining with a bloodvessel ( black arrow, 400x) in muscle tissue with clear collagen (blue) G) hypoxia (pimonidazole) staining (400x) and H) hypoxia (pimonidazole) staining (200x).



**FIGURE 2** Representative photomicrographs of caspase-3 immunostaining (200x). Black arrows indicate apoptotic cell fragments.

**TABLE 1**

Information of the performed immunohistochemical stainings

Antibody	Company	AG retrieval	Dilution + incubation primary antibody	Secondary antibody	Kit
caspase-3	Cell Signaling Techn. # 9661	citrate, 10 min	1/400, 4°C overnight	RTU, 30 min (polymer-HRP anti-rabbit)	Dako Envision
α-smooth muscle actin	Abcam, ab5694	citrate, 10 min	1/100, 1 hour	RTU, 30 min (polymer-HRP anti-rabbit)	Dako Envision
von Willebrand factor	Dako, A0082	proteinase K, 7 min	1/300, 1 hour	Biotinylated Goat Anti-polyvalent RTU, 10 min	Ultrasense ImmunoLogic
Hypoxyprobe-1 Mab1	Chemicon International	citrate, 10 min	1/1000, 1 hour	Rabbit Anti-FITC HRP, 1/50, 30 min	Dako Envision

AG= antigen retrieval; RTU= ready-to-use; HRP= horseradish peroxidase

**TABLE 2**

Primer sequences of all genes

Gene	Species	Forward primer	Reverse primer
hypoxanthine guanine phosphoribosyl transferase (HPRT)	human	TGA CAC TGG CAA AAC AAT GCA	GGT CCT TTT CAC CAG CAA GCT
succinate dehydrogenase complex, subunit A (SDHA)	human	TGG GAA CAA GAG GGC ATC TG	CCA CCA CTG CAT CAA ATT CAT G
vascular endothelial growth factor A (VEGF-A)	human	TCCTCACACCATTGAAACCA	GATCCTGCCCTGTCTCTCTG
angiopoetin (Ang-1)	human	GGACAGCAGGAAAACAGAGC	CACAAGCATCAAACCACCAT
HPRT	mouse	GTT AAG CAG TAC AGC CCC AAA	AGG GCA TAT CCA ACA ACA AAC TT
hydroxymethyl-bilane synthase (HMBS)	mouse	AAG GGC TTT TCT GAG GCA CC	AGT TGC CCA TCT TTC ATC ACT G
alpha-smooth muscle actin ( $\alpha$ -SMA)	mouse	CCA GCA CCA TGA AGA TCA AG	TGG AAG GTA GAC AGC GAA GC
platelet/endothelial cell adhesion molecule 1 (PECAM-1, CD31)	mouse	TGCCTTGTTTCATGTTGGGTA	CCTCAGAATATTCCAGGGCA