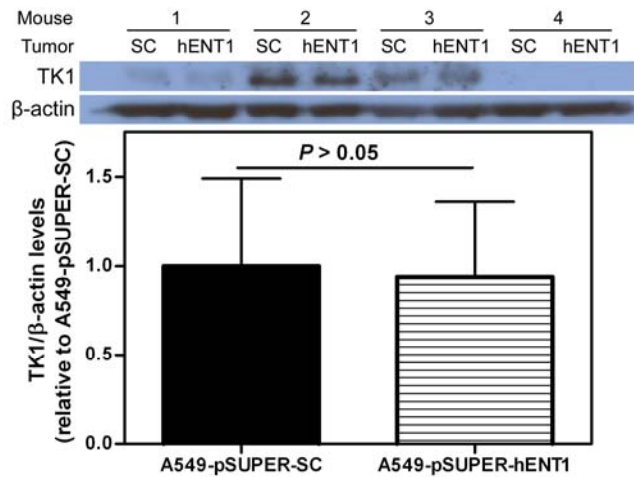


SUPPLEMENTAL FIGURE 1. Analysis of mENT1 transcript levels in spleens of ENT1^{+/+} and ENT1^{-/-} mice. mRNA was isolated from spleens of ENT1^{+/+} and ENT1^{-/-} mice and ENT1 transcript levels were analyzed with TaqMan real-time RT-PCR. Shown are fluorescence levels, which represent the presence of ENT1 mRNA transcripts, from individual wells from a representative experiment.



SUPPLEMENTAL FIGURE 2. Immunoblot of TK1 and β -actin in A549-derived xenograft tumors from four different mice. Average TK1/ β -actin band intensity ratios were quantified with MetaMorph Offline software and bars represent mean \pm SEM values.