

Table 1: Tumor absorbed dose measures and response for all imaged tumors.

Subject	Tumor name	Average Dose (cGy)	EUD (cGy)	Max. Dose (cGy)	D99 <sup>†</sup> (cGy)	D80 (cGy)	Initial Vol. (mL)	Volume decrease during tracer SPECT/CT <sup>*</sup> %	Volume decrease during therapy SPECT/CT <sup>**</sup> %	Decrease in product of diameters at 2 months <sup>***</sup> %	Overall response <sup>****</sup>
1	Pelvis	157	113	303	84	117	400	4	3	8	SD
2	Paraortic	273	229	504	169	236	409	-2	17	-45	SD
3	Inguinal	248	347	465	87	173	140	18	31	84	CR
	Iliac	230	320	395	101	177	234	23	17	100	
4	Pelvis big	434	379	772	224	334	314	1	26	93	CR
	Pelvis small	430	372	810	209	330	39	-10	31	87	
5	Renal	354	415	515	244	303	58	6	59	84	CR
	L paraaortic	314	378	387	242	281	34	13	61	90	
	Central	344	453	449	276	305	21	10	43	73	
	Hepatic	366	445	501	281	324	19	8	53	78	
	Crux	317	388	420	250	286	10	13	39	91	
6	L iliac	387	634	534	248	329	34	35	65	100	CR
	Paraortic	385	600	731	247	301	74	49	27	100	
7	R inguinal up	221	299	544	49	109	16	4	31	83	PR
	R inguinal big	261	376	556	95	168	71	10	28	42	
	R inguinal small	109	140	276	35	58	24	16	23	51	
	L inguinal up	207	333	427	91	130	11	13	13	62	
	L inguinal big	260	367	568	69	141	114	9	31	65	
	L inguinal small	191	281	541	60	95	22	29	31	68	
8	R inguinal lateral	171	281	284	97	127	5	5	56	84	CR
	R inguinal medial	362	658	486	243	317	7	14	52	85	
	R iliac	341	543	619	203	262	54	15	64	92	
	R aorta	364	566	529	86	318	79	23	49	93	
	R anterior acetab.	371	516	612	172	236	34	9	76	97	
	R posterior acetab.	380	704	575	225	318	44	20	67	93	
	L acetabulum	420	658	541	292	380	31	29	55	94	
9	R inguinal	113	174	162	67	97	12	10	23	16	SD
	L inguinal	102	148	167	57	75	19	9	18	11	
	L iliac	124	190	233	82	99	35	12	17	4	
10	R anterior iliac	413	486	759	203	303	45	9	43	64	CR
	R posterior iliac	403	492	574	218	334	54	17	40	89	
	R inguinal	358	391	926	116	216	76	4	29	79	
11	L kidney up	575	517	959	373	466	7	36	25	-7	SD
	L kidney down	565	485	1046	278	387	15	8	17	21	
	R psoas	566	482	1367	231	395	113	1	2	-33	
12	Para vertebral	245	318	388	167	202	28	1	24	91	CR
13	Hilar spleen	391	541	424	334	379	7	10	56	63	CR
	L Dph	300	373	414	229	269	36	25	48	68	
	L paraaortic	306	392	430	203	261	84	9	38	84	
	L psoas	249	312	484	127	191	36	11	34	85	
	R Dph down	303	386	399	234	265	6	10	17	82	
	R Dph up	296	371	434	231	266	27	22	40	55	
	R paraaortic	326	403	449	213	282	97	25	20	61	
14	L neck up	215	173	278	153	190	3	1	21	100	CR
	L neck mid	294	251	371	230	267	2	-4	9	100	
	L neck down	352	309	419	250	323	2	-6	55	100	
15	Central	455	409	564	334	394	18	17	17	51	PR
16	Abdominal	196	152	320	118	168	423	13	19	41	SD
17	Spleen	NA	NA	NA	NA	NA	157	2	17	18	SD
	L pelvis	NA	NA	NA	NA	NA	135	20	21	33	
	L Ex	NA	NA	NA	NA	NA	19	28	18	7	
18	Lung	239	318	407	159	198	151	39	56	69	PR
19	L neck	408	611	680	198	276	12	15	30	72	CR
20	L iliac	341	498	508	226	287	7	18	30	64	PR
	L inguinal inferior	377	506	657	166	272	45	15	31	71	
	R iliac	711	764	1372	183	463	12	2	31	74	
	R inguinal inferior	553	692	1404	201	373	34	10	27	61	
	R inguinal lateral	364	437	584	115	217	5	13	17	68	
	R inguinal medial	531	743	900	251	381	14	21	42	70	
	R inguinal superior	295	391	590	137	192	5	32	28	71	
<b>Median</b>		<b>341</b>	<b>391</b>	<b>508</b>	<b>203</b>	<b>269</b>	<b>34</b>	<b>12</b>	<b>30</b>	<b>72</b>	

\* % decrease in tumor volume defined on first and last post-tracer SPECT/CT (a time period of 6 days)  
 \*\* % decrease in tumor volume defined on first and last post-therapy SPECT/CT (a time period of approximately 6 days)  
 \*\*\* % decrease in product of largest perpendicular diameters at 2 months compared with first post-tracer time point  
 \*\*\*\*all lesions evaluated by Cheson criteria, which includes PET findings [19]

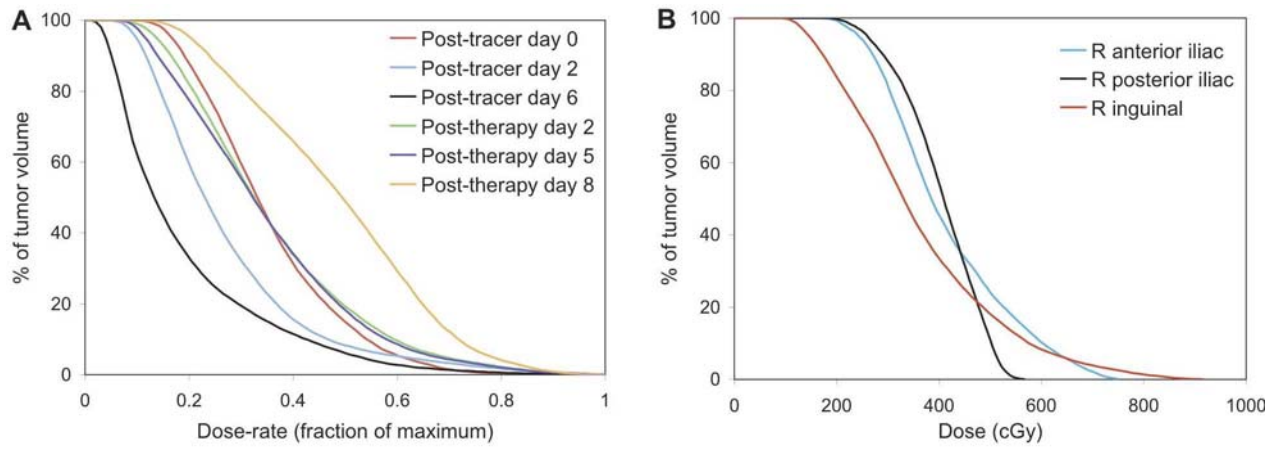


FIGURE 1. (A) Dose-rate volume histograms for the inguinal tumor of patient #10 at the six imaging time points. (B) Dose-volume histograms for this tumor and two other tumors of the same patient.